

Recombinant Human Thyroid Hormone Receptor beta protein
ab82049

1 图像

描述	
产品名称	重组人Thyroid Hormone Receptor beta蛋白
纯度	> 95 % SDS-PAGE.
表达系统	Escherichia coli
蛋白长度	Full length protein
无动物成分	No
性质	Recombinant
种属	Human
标签	His tag N-Terminus
额外的序列信息	This protein is His-tagged.

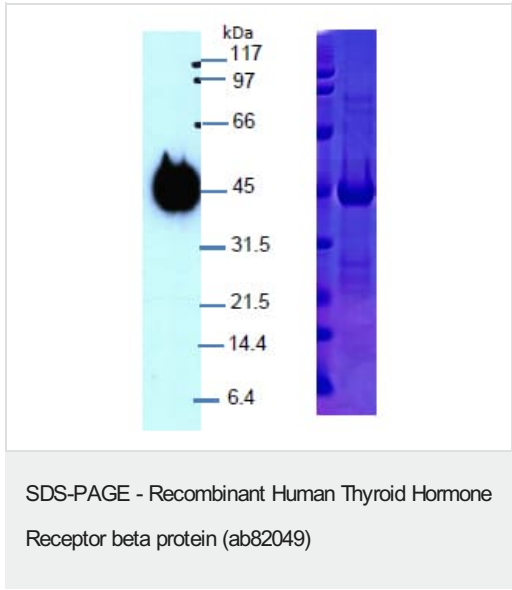
技术指标	
Our Abpromise guarantee covers the use of ab82049 in the following tested applications.	
The application notes include recommended starting dilutions; optimal dilutions/concentrations should be determined by the end user.	
应用	SDS-PAGE Functional Studies
形式	Liquid

制备和贮存	
稳定性和存储	Shipped on dry ice. Upon delivery aliquot and store at -80°C. Avoid freeze / thaw cycles. pH: 7.9 Constituents: 0.75% Potassium chloride, 0.0154% DTT, 0.316% Tris HCl, 0.00584% EDTA, 20% Glycerol (glycerin, glycerine)

常规信息	
------	--

功能	High affinity receptor for triiodothyronine.
疾病相关	<p>Defects in THRB are the cause of generalized thyroid hormone resistance (GTHR) [MIM:188570, 274300]. GTHR is transmitted as an autosomal dominant trait, but an autosomal recessive form also exists. The disease is characterized by goiter, abnormal mental functions, increased susceptibility to infections, abnormal growth and bone maturation, tachycardia and deafness. Affected individuals may also have attention deficit-hyperactivity disorders (ADHD) and language difficulties. GTHR patients also have high levels of circulating thyroid hormones (T3-T4), with normal or slightly elevated thyroid stimulating hormone (TSH).</p> <p>Defects in THRB are the cause of selective pituitary thyroid hormone resistance (PRTH) [MIM:145650]; also known as familial hyperthyroidism due to inappropriate thyrotropin secretion. PRTH is a variant form of thyroid hormone resistance and is characterized by clinical hyperthyroidism, with elevated free thyroid hormones, but inappropriately normal serum TSH. Unlike GRTH, where the syndrome usually segregates with a dominant allele, the mode of inheritance in PRTH has not been established.</p>
序列相似性	<p>Belongs to the nuclear hormone receptor family. NR1 subfamily.</p> <p>Contains 1 nuclear receptor DNA-binding domain.</p>
结构域	Composed of three domains: a modulating N-terminal domain, a DNA-binding domain and a C-terminal ligand-binding domain.
细胞定位	Nucleus.

图片



SDS-PAGE analysis of Human Thyroid Hormone Receptor beta full length protein (ab82049).

Please note: All products are "FOR RESEARCH USE ONLY. NOT FOR USE IN DIAGNOSTIC PROCEDURES"

Our Abpromise to you: Quality guaranteed and expert technical support

- Replacement or refund for products not performing as stated on the datasheet
- Valid for 12 months from date of delivery
- Response to your inquiry within 24 hours
- We provide support in Chinese, English, French, German, Japanese and Spanish

- Extensive multi-media technical resources to help you
- We investigate all quality concerns to ensure our products perform to the highest standards

If the product does not perform as described on this datasheet, we will offer a refund or replacement. For full details of the Abpromise, please visit <https://www.abcam.cn/abpromise> or contact our technical team.

Terms and conditions

- Guarantee only valid for products bought direct from Abcam or one of our authorized distributors