

Recombinant Human Testin protein ab99213

1 图像

描述	
产品名称	重组人Testin蛋白
纯度	> 90 % SDS-PAGE. ab99213 was purified using conventional chromatography techniques.
表达系统	Escherichia coli
Accession	<u>Q9UGI8</u>
蛋白长度	Full length protein
无动物成分	No
性质	Recombinant
种属	Human
序列	<div>MGSSHHHHHSSGLVPRGSHMDLENKVKKMGLGHEQGFGA</div> <div>PCLKCKEKCE</div> <div>GFELHFWRKICRNCKCGQEEHDVLLSNEEDRKVGKLFEDTKY</div> <div>TTLIAKLK</div> <div>SDGIPMYKRNVMI LTNPVAACKNVSINTVTYEWAPPVQNQAL</div> <div>ARQYMQML</div> <div>PKEKQPVAGSEGAQYRKKQLAKQLPAHDQDPSKCHELSPREV</div> <div>KEMEQFVK</div> <div>KYKSEALGVGDVKLPCEMDAQGPKQMNI PGGDRSTPAAVGAM</div> <div>EDKSAEHK</div> <div>RTQYSCYCCKLSMKEGDP AIYAERAGYDKLWHPACFVCSTCH</div> <div>ELLVDM IY</div> <div>FWKNEKLYCGRHYCDSEKPRCAGCDELIFSNEYTQAENQNW H</div> <div>LKH FCCFD</div> <div>CDSILAGEIYVMVNDKPVCKPCYVKNHAVVCQGCHNAIDPEV</div> <div>Q RVTYNNF</div> <div>SWHASTECFLCSCCSKCLIGQKFMPVEGMVFCSVECKKRMS</div>
预测分子量	50 kDa including tags
氨基酸	1 to 421
标签	His tag N-Terminus

技术指标

Our [Abpromise guarantee](#) covers the use of **ab99213** in the following tested applications.

The application notes include recommended starting dilutions; optimal dilutions/concentrations should be determined by the end user.

应用	SDS-PAGE
	Mass Spectrometry
质谱法	MALDI-TOF
形式	Liquid

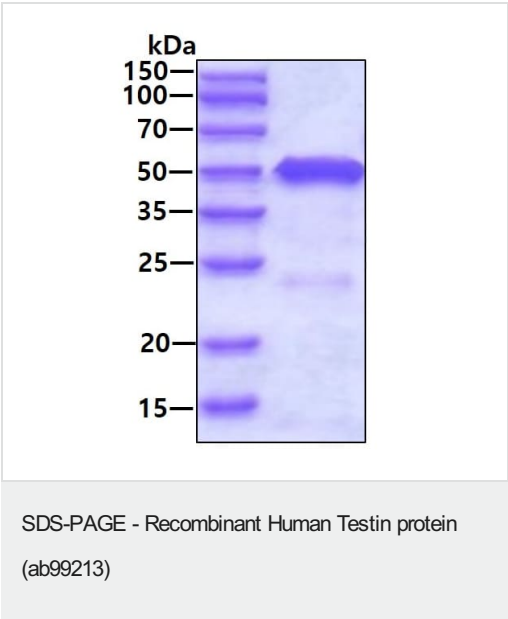
制备和贮存

稳定性和存储	Shipped at 4°C. Upon delivery aliquot and store at -20°C or -80°C. Avoid repeated freeze / thaw cycles.
	pH: 8.00
	Constituents: 0.0154% DTT, 0.316% Tris HCl, 10% Glycerol (glycerin, glycerine), 0.58% Sodium chloride

常规信息

功能	Scaffold protein that may play a role in cell adhesion, cell spreading and in the reorganization of the actin cytoskeleton. Plays a role in the regulation of cell proliferation. May act as a tumor suppressor. Inhibits tumor cell growth.
组织特异性	Ubiquitous.
序列相似性	Belongs to the prickly / espinas / testin family. Contains 3 LIM zinc-binding domains. Contains 1 PET domain.
结构域	The N-terminal and the C-terminal halves of the protein can associate with each other, thereby hindering interactions with ZYX.
细胞定位	Cytoplasm. Cell junction > focal adhesion. Detected along actin stress fibers.

图片



SDS-PAGE analysis of ab99213

Please note: All products are "FOR RESEARCH USE ONLY. NOT FOR USE IN DIAGNOSTIC PROCEDURES"

Our Abpromise to you: Quality guaranteed and expert technical support

- Replacement or refund for products not performing as stated on the datasheet
- Valid for 12 months from date of delivery
- Response to your inquiry within 24 hours
- We provide support in Chinese, English, French, German, Japanese and Spanish
- Extensive multi-media technical resources to help you
- We investigate all quality concerns to ensure our products perform to the highest standards

If the product does not perform as described on this datasheet, we will offer a refund or replacement. For full details of the Abpromise, please visit <https://www.abcam.cn/abpromise> or contact our technical team.

Terms and conditions

- Guarantee only valid for products bought direct from Abcam or one of our authorized distributors