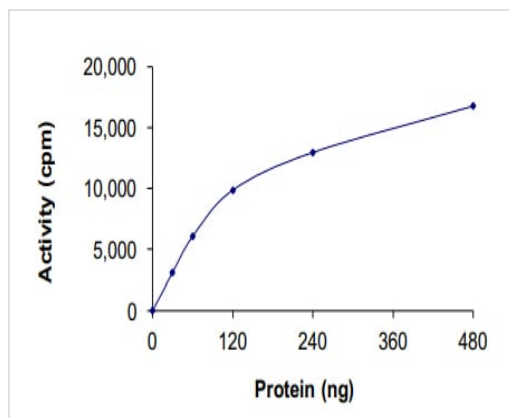


Recombinant human TESK2 protein ab140418

4 图像

描述	
产品名称	重组人TESK2蛋白
生物活性	The specific activity of ab140418 was determined to be 3.5 nmol/min/mg.
纯度	> 80 % Densitometry. Affinity purified.
表达系统	Baculovirus infected Sf9 cells
Accession	<u>Q96S53</u>
蛋白长度	Full length protein
无动物成分	No
性质	Recombinant
种属	Human
序列	MDRSKRNSIAGFPPRVERLEEFEGGGGGEGNVSQVGRVWPSS YRALISAF SRLTRLDDFTCEKIGSGFFSEVFKVRHRASGQVMALKMNTLS SNRANMLK EVQLMNRLSHPNILRFMGVCVHQQLHALTEYINSGNLEQLL DSNLHLPW TVRVKLAYDIAVGLSYLHFKGIFHRDLTSKNCLIKRDENGYS AVVADFGL AEKIPDVSMGSEKLAVVGSPFWMAPEVLRDEPYNEKADVFSY GIILCEII ARIQADPDYLPRTENFGLDYDAFQHMVGDCPPDFLQLTFNCC NMDPKLRP SFVEIGKTLEEILSRLQEEEQERDRKLQPTARGLLEKAPGVK RLSSLDDK IPHKSPCPRRTIWLSRSQSDIFSRKPPRTVSVLDPYYRPRDG AARTPKVN PFSARQDLMGGKIKFFDLPSKSVISLVFDLDAPGPGTMPLAD WQEPLAPP IRRWRSLPGSPEFLHQEACPFVGREESLSDGPPPRLLSSLKYR VKEIPPFR ASALPAAQAHEAMDCSILQEENGFGSRPQGTSPCPAGASEEM EVEERPAG STPATFSTSGIGLQTQGKQDG
预测分子量	92 kDa including tags

氨基酸	1 to 571
技术指标	
Our Abpromise guarantee covers the use of ab140418 in the following tested applications.	
The application notes include recommended starting dilutions; optimal dilutions/concentrations should be determined by the end user.	
应用	Western blot Functional Studies SDS-PAGE
形式	Liquid
补充说明	ab85154 (Human Cofilin full length protein) can be utilized as a substrate for assessing Kinase activity
制备和贮存	
稳定性和存储	Shipped on dry ice. Upon delivery aliquot and store at -80°C. Avoid freeze / thaw cycles. pH: 7.50 Constituents: 0.31% Glutathione, 0.002% PMSF, 0.004% DTT, 0.79% Tris HCl, 0.003% EDTA, 25% Glycerol (glycerin, glycerine), 0.88% Sodium chloride This product is an active protein and may elicit a biological response in vivo, handle with caution.
常规信息	
功能	Dual specificity protein kinase activity catalyzing autophosphorylation and phosphorylation of exogenous substrates on both serine/threonine and tyrosine residues. Phosphorylates cofilin at 'Ser-3'. May play an important role in spermatogenesis.
组织特异性	Predominantly expressed in testis and prostate. Found predominantly in non-germinal Sertoli cells.
序列相似性	Belongs to the protein kinase superfamily. TKL Ser/Thr protein kinase family. Contains 1 protein kinase domain.
细胞定位	Nucleus.
图片	



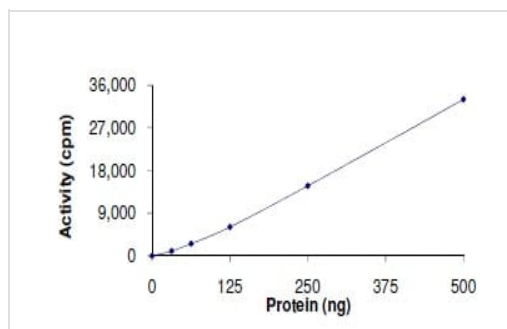
The specific activity of TESK2 (ab140418) was determined to be 4 nmol/min/mg as per activity assay protocol

Functional Studies - Recombinant human TESK2 protein (ab140418)



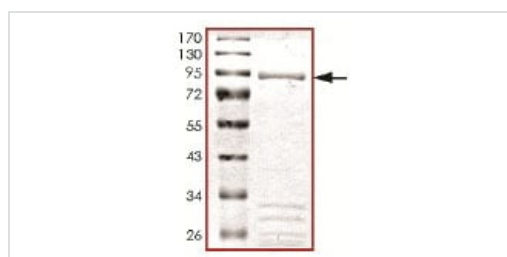
SDS PAGE analysis of ab140418

SDS-PAGE - Recombinant human TESK2 protein (ab140418)



Kinase Activity Plot. The specific activity of ab140418 was determined to be 3.5 nmol/min/mg.

Functional Studies - Recombinant human TESK2 protein (ab140418)



SDS-PAGE analysis of ab140418.

SDS-PAGE - Recombinant human TESK2 protein (ab140418)

Please note: All products are "FOR RESEARCH USE ONLY. NOT FOR USE IN DIAGNOSTIC PROCEDURES"

Our Abpromise to you: Quality guaranteed and expert technical support

- Replacement or refund for products not performing as stated on the datasheet
- Valid for 12 months from date of delivery
- Response to your inquiry within 24 hours
- We provide support in Chinese, English, French, German, Japanese and Spanish
- Extensive multi-media technical resources to help you
- We investigate all quality concerns to ensure our products perform to the highest standards

If the product does not perform as described on this datasheet, we will offer a refund or replacement. For full details of the Abpromise, please visit <https://www.abcam.cn/abpromise> or contact our technical team.

Terms and conditions

- Guarantee only valid for products bought direct from Abcam or one of our authorized distributors