

# Recombinant Human Syntenin protein ab101950

### 1 图像

#### 描述

产品名称	重组人Syntenin蛋白	
纯度	> 90 % SDS-PAGE. ab101950 is purified using conventional chromatography techniques.	
内毒素水平	< 1.000 Eu/μg	
表达系统	Escherichia coli	
Accession	<b><u>O00560</u></b>	
蛋白长度	Full length protein	
无动物成分	No	
性质	Recombinant	
种属	Human	
序列		<p><b>MGSSHHHHHSSGLVPRGSHMSLYPSLEDLKVDKVIQAQT</b>  <b>AFSANPANPA</b>  <b>ILSEASAPIPHDGNLYPRLYPELSQYMGLSLNEEEIRANVAV</b>  <b>VSGAPLQG</b>  <b>QLVARPSSINYMVAPVTGNDVGIIRRAEIKQGIREVILCKDQD</b>  <b>GKIGLRLK</b>  <b>SIDNGIFVQLVQANSPASLVGLRFGDQVLQINGENCAGWSSD</b>  <b>KAHKVLKQ</b>  <b>AFGEKITMTIRDRPFERTITM HKDSTGHVGFIFKNGKITSIV</b>  <b>KDSSAARN</b>  <b>GLLTEHNICEINGQNVIGLKDSQIADILSTSGTVVTITIMPA</b>  <b>FIFEHIK RMAPSIMKSLMDHTIPEV</b></p>
预测分子量	35 kDa including tags	
氨基酸	1 to 298	
标签	His tag N-Terminus	

#### 技术指标

Our **Abpromise guarantee** covers the use of **ab101950** in the following tested applications.

The application notes include recommended starting dilutions; optimal dilutions/concentrations should be determined by the end user.

应用	SDS-PAGE
	Mass Spectrometry

质谱法	MALDI-TOF
形式	Liquid

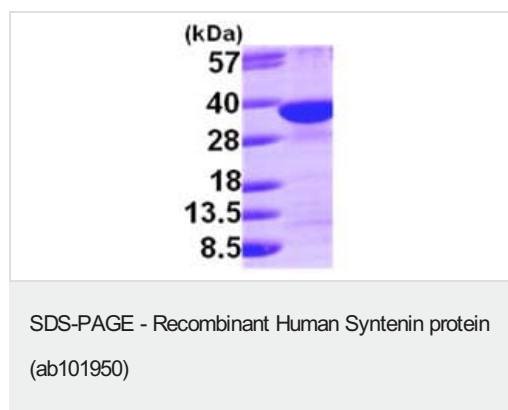
### 制备和贮存

稳定性和存储	Shipped at 4°C. Upon delivery aliquot and store at -20°C or -80°C. Avoid repeated freeze / thaw cycles.  pH: 8.00 Constituents: 0.316% Tris HCl, 40% Glycerol (glycerin, glycerine), 0.58% Sodium chloride
--------	---

### 常规信息

功能	Seems to function as an adapter protein. In adherens junctions may function to couple syndecans to cytoskeletal proteins or signaling components. Seems to couple transcription factor SOX4 to the IL-5 receptor (IL5RA). May also play a role in vesicular trafficking. Seems to be required for the targeting of TGFA to the cell surface in the early secretory pathway.
组织特异性	Widely expressed. Expressed in fetal kidney, liver, lung and brain. In adult highest expression in heart and placenta.
序列相似性	Contains 2 PDZ (DHR) domains.
翻译后修饰	Phosphorylated on tyrosine residues.
细胞定位	Cell junction > focal adhesion. Cell junction > adherens junction. Cell membrane. Endoplasmic reticulum membrane. Nucleus. Melanosome. Cytoplasm > cytosol. Cytoplasm > cytoskeleton. Mainly membrane-associated. Localized to adherens junctions, focal adhesions and endoplasmic reticulum. Colocalized with actin stress fibers. Also found in the nucleus. Identified by mass spectrometry in melanosome fractions from stage I to stage IV.

### 图片



15% SDS-PAGE analysis of 3µg ab101950.

**Please note:** All products are "FOR RESEARCH USE ONLY. NOT FOR USE IN DIAGNOSTIC PROCEDURES"

### Our Abpromise to you: Quality guaranteed and expert technical support

- Replacement or refund for products not performing as stated on the datasheet

- Valid for 12 months from date of delivery
- Response to your inquiry within 24 hours
  
- We provide support in Chinese, English, French, German, Japanese and Spanish
- Extensive multi-media technical resources to help you
- We investigate all quality concerns to ensure our products perform to the highest standards

If the product does not perform as described on this datasheet, we will offer a refund or replacement. For full details of the Abpromise, please visit <https://www.abcam.cn/abpromise> or contact our technical team.

### **Terms and conditions**

---

- Guarantee only valid for products bought direct from Abcam or one of our authorized distributors