

Recombinant Human Synaptophysin protein ab114166

1 图像

描述

产品名称	重组人Synaptophysin蛋白	
表达系统	Wheat germ	
Accession	<u>P08247</u>	
蛋白长度	Full length protein	
无动物成分	No	
性质	Recombinant	
种属	Human	
序列		<pre> MLLLADMDVVNQLVAGGQFRVVKEPLGFVKVLQWVFAIFAFA TCGSYS GELQLNVDCANKTESDLSIEVEFEYPFRLHQVYFDAPTCRGG TTKVFLVG DYSSSAEFFVTVAVFALYSMGALATYIFLQNKYRENNKGPM LDFLATAV FAFMWLVSSSAWAKGLSDVKMATDPENIIKEMPVCRQTGNTC KELRDLVT SGLNTSVVFGFLNLVLWVGNLWFVKETGWAAPFLRAPPGAP EKQPAPGD AYGDAGYGQPGGGYPQDSYGPQGGYQPDYQQPAGSGGSGYG PQGDYQQQ GYGPQGAPTSFSNQM </pre>
预测分子量	61 kDa including tags	
氨基酸	1 to 313	

技术指标

Our **Abpromise guarantee** covers the use of **ab114166** in the following tested applications.

The application notes include recommended starting dilutions; optimal dilutions/concentrations should be determined by the end user.

应用	SDS-PAGE
	ELISA
	Western blot
形式	Liquid

稳定性和存储

Shipped on dry ice. Upon delivery aliquot and store at -80°C. Avoid freeze / thaw cycles.

pH: 8.00

Constituents: 0.3% Glutathione, 0.79% Tris HCl

常规信息

功能

Possibly involved in structural functions as organizing other membrane components or in targeting the vesicles to the plasma membrane. Involved in the regulation of short-term and long-term synaptic plasticity.

组织特异性

Characteristic of a type of small (30-80 nm) neurosecretory vesicles, including presynaptic vesicles, but also vesicles of various neuroendocrine cells of both neuronal and epithelial phenotype.

疾病相关

Mental retardation, X-linked, SYP-related

序列相似性

Belongs to the synaptophysin/synaptobrevin family.

Contains 1 MARVEL domain.

结构域

The calcium-binding activity is thought to be localized in the cytoplasmic tail of the protein.

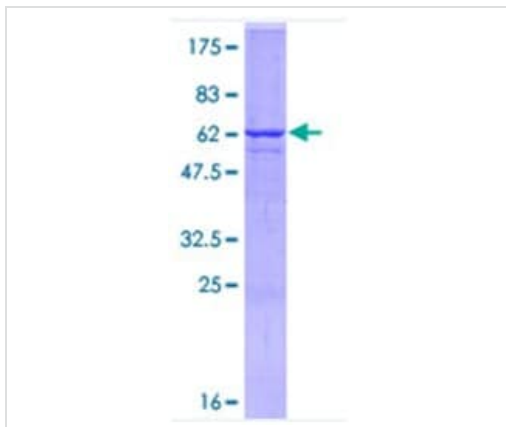
翻译后修饰

Ubiquitinated; mediated by SIAH1 or SIAH2 and leading to its subsequent proteasomal degradation.

细胞定位

Cytoplasmic vesicle, secretory vesicle, synaptic vesicle membrane. Cell junction, synapse, synaptosome.

图片



12.5% SDS-PAGE analysis of ab114166, stained with Coomassie Blue.

SDS-PAGE - Recombinant Human Synaptophysin protein (ab114166)

Please note: All products are "FOR RESEARCH USE ONLY. NOT FOR USE IN DIAGNOSTIC PROCEDURES"

Our Abpromise to you: Quality guaranteed and expert technical support

- Replacement or refund for products not performing as stated on the datasheet

- Valid for 12 months from date of delivery
- Response to your inquiry within 24 hours

- We provide support in Chinese, English, French, German, Japanese and Spanish
- Extensive multi-media technical resources to help you
- We investigate all quality concerns to ensure our products perform to the highest standards

If the product does not perform as described on this datasheet, we will offer a refund or replacement. For full details of the Abpromise, please visit <https://www.abcam.cn/abpromise> or contact our technical team.

Terms and conditions

- Guarantee only valid for products bought direct from Abcam or one of our authorized distributors