

Recombinant Human SUFU protein ab113584

1 图像

描述	
产品名称	重组人SUFU蛋白
纯度	> 90 % SDS-PAGE. ab113584 was purified by using conventional chromatography techniques.
表达系统	Escherichia coli
Accession	<u>Q9UMX1</u>
蛋白长度	Full length protein
无动物成分	No
性质	Recombinant
种属	Human
序列	MGSSHHHHHH SSGLVPRGSH MAELRPSGAP GPTAPPAPGP TAPPAFASLF PPGLHAIYGE CRRLYPDQPN PLQVTAIVKY WLGGPDPLDY VSMYRNVGSP SANIPEHWHY ISFGLSDLYG DNRVHEFTGT DGPSGFGFEL TFRLKRETGE SAPPTWPAEL MQGLARYVFQ SENTFCSGDH VSWHSPLDNS ESRIQHMLLT EDPQMGPVQT PFGVVTFLQI VGVCTEELHS AQQWNGQGIL ELLRTVPIAG GPWLITDMRR GETIFEIDPH LQERVDKGIE TDGSNLSGVS AKCAWDDLRS PPEDDEDSRS ICIGTQPRRL SGKDTEQIRE TLRRGLEINS KPVLPPIPNQ RQNGLAHDRA PSRKDSLESD SSTAIIPHEL IRTRQLESVH LKFNQESGAL IPLCLRGRLL HGRHFTYKSI TGDMAITFVS TGVEGAFATE EHPYAAHGPW LQILLTEEFV EKMLEDLEDL TSPEEFKLPK EYSWPEKKLK VSILPDVVFD SPLH
预测分子量	56 kDa including tags
氨基酸	1 to 484
标签	His tag N-Terminus

技术指标

Our **Abpromise guarantee** covers the use of **ab113584** in the following tested applications.

The application notes include recommended starting dilutions; optimal dilutions/concentrations should be determined by the end user.

应用 SDS-PAGE

形式 Liquid

制备和贮存

稳定性和存储 Shipped at 4°C. Store at +4°C short term (1-2 weeks). Upon delivery aliquot. Store at -20°C or -80°C. Avoid freeze / thaw cycle.

pH: 7.4

Constituents: 10% Glycerol (glycerin, glycerine), 90% PBS

常规信息

功能 Negative regulator in the hedgehog signaling pathway. Down-regulates GLI1-mediated transactivation of target genes (PubMed:15367681, PubMed:24311597, PubMed:24217340). Down-regulates GLI2-mediated transactivation of target genes (PubMed:24311597, PubMed:24217340). Part of a corepressor complex that acts on DNA-bound GLI1. May also act by linking GLI1 to BTRC and thereby targeting GLI1 to degradation by the proteasome. Sequesters GLI1, GLI2 and GLI3 in the cytoplasm, this effect is overcome by binding of STK36 to both SUFU and a GLI protein (PubMed:10806483, PubMed:24217340). Negative regulator of beta-catenin signaling. Regulates the formation of either the repressor form (GLI3R) or the activator form (GLI3A) of the full length form of GLI3 (GLI3FL). GLI3FL is complexed with SUFU in the cytoplasm and is maintained in a neutral state. Without the Hh signal, the SUFU-GLI3 complex is recruited to cilia, leading to the efficient processing of GLI3FL into GLI3R. When Hh signaling is initiated, SUFU dissociates from GLI3FL and the latter translocates to the nucleus, where it is phosphorylated, destabilized, and converted to a transcriptional activator (GLI3A). Required for normal embryonic development. Required for the proper formation of hair follicles and the control of epidermal differentiation.

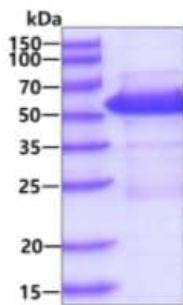
组织特异性 Ubiquitous in adult tissues. Detected in osteoblasts of the perichondrium in the developing limb of 12-week old embryos. Isoform 1 is detected in fetal brain, lung, kidney and testis. Isoform 2 is detected in fetal testis, and at much lower levels in fetal brain, lung and kidney.

疾病相关 Medulloblastoma

序列相似性 Belongs to the SUFU family.

细胞定位 Cytoplasm. Nucleus.

图片



SDS-PAGE - Recombinant Human SUFU protein
(ab113584)

3ug by SDS-PAGE under reducing condition and visualized by coomassie blue stain.

Please note: All products are "FOR RESEARCH USE ONLY. NOT FOR USE IN DIAGNOSTIC PROCEDURES"

Our Abpromise to you: Quality guaranteed and expert technical support

- Replacement or refund for products not performing as stated on the datasheet
- Valid for 12 months from date of delivery
- Response to your inquiry within 24 hours
- We provide support in Chinese, English, French, German, Japanese and Spanish
- Extensive multi-media technical resources to help you
- We investigate all quality concerns to ensure our products perform to the highest standards

If the product does not perform as described on this datasheet, we will offer a refund or replacement. For full details of the Abpromise, please visit <https://www.abcam.cn/abpromise> or contact our technical team.

Terms and conditions

- Guarantee only valid for products bought direct from Abcam or one of our authorized distributors