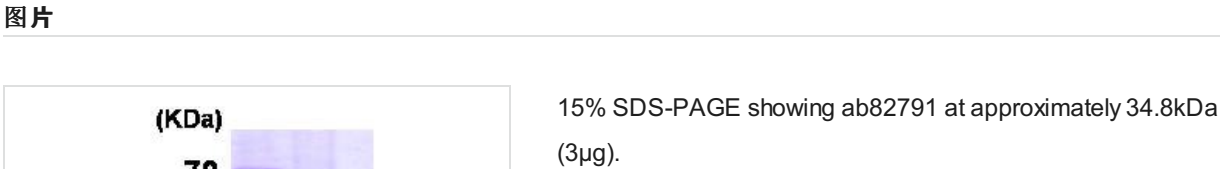


Recombinant Human STUB1/CHIP protein ab82791

1 [References](#) 2 [图像](#)

描述	
产品名称	重组人STUB1/CHIP蛋白
纯度	> 90 % SDS-PAGE.
表达系统	Escherichia coli
蛋白长度	Full length protein
无动物成分	No
性质	Recombinant
种属	Human
序列	MKGKEEKEGG ARLGAGGGSP EKSPSAQELK EQGNRLFVGR KYPEAAACYG RAITRNPLVA VYYTNRALCY LKMQQHEQAL ADCRRALELD GQSVKAHFFL GQCQLEMESY DEAIANLQRA YSLAKEQRLN FGDDIPSALR IAKKKRWNSI EERRIHQESE LHSYLSRLIA AERERELEEC QRNHEGDEDD SHVRAQQACI EAKHDKYMAD MDELF SQVDE KRKKRDIPDY LCGKISFELM REPCITPSGI TYDRKDIEEH LQRVGHFDPV TRSPLTQEQL IPNLAMKEVI DAFISENGWV EDY
氨基酸	1 to 303
技术指标	
Our Abpromise guarantee covers the use of ab82791 in the following tested applications.	
The application notes include recommended starting dilutions; optimal dilutions/concentrations should be determined by the end user.	
应用	SDS-PAGE Western blot
形式	Liquid
补充说明	Previously labelled as STUB1.
制备和贮存	

稳定性和存储	Shipped at 4°C. Upon delivery aliquot and store at -20°C or -80°C. Avoid repeated freeze / thaw cycles. pH: 7.50 Constituents: 0.077% DTT, 0.316% Tris HCl, 10% Glycerol (glycerin, glycerine)
常规信息	
功能	E3 ubiquitin-protein ligase which targets misfolded chaperone substrates towards proteasomal degradation. Ubiquitinates NOS1 in concert with Hsp70 and Hsp40. Modulates the activity of several chaperone complexes, including Hsp70, Hsc70 and Hsp90. Mediates transfer of non-canonical short ubiquitin chains to HSPA8 that have no effect on HSPA8 degradation. Mediates polyubiquitination of DNA polymerase beta (POLB) at 'Lys-41', 'Lys-61' and 'Lys-81', thereby playing a role in base-excision repair: catalyzes polyubiquitination by amplifying the HUWE1/ARF-BP1-dependent monoubiquitination and leading to POLB-degradation by the proteasome. Mediates polyubiquitination of CYP3A4.
组织特异性	Highly expressed in skeletal muscle, heart, pancreas, brain and placenta. Detected in kidney, liver and lung.
通路	Protein modification; protein ubiquitination.
序列相似性	Contains 3 TPR repeats. Contains 1 U-box domain.
结构域	The TPR domain is essential for ubiquitination mediated by UBE2D1.
翻译后修饰	Phosphorylated upon DNA damage, probably by ATM or ATR. Auto-ubiquitinated; mediated by UBE2D1 and UBE2D2.
细胞定位	Cytoplasm.



SDS-PAGE - Recombinant Human STUB1/CHIP protein (ab82791)



Western blot - Recombinant Human STUB1/CHIP protein (ab82791)

Please note: All products are "FOR RESEARCH USE ONLY. NOT FOR USE IN DIAGNOSTIC PROCEDURES"

Our Abpromise to you: Quality guaranteed and expert technical support

- Replacement or refund for products not performing as stated on the datasheet
- Valid for 12 months from date of delivery
- Response to your inquiry within 24 hours
- We provide support in Chinese, English, French, German, Japanese and Spanish
- Extensive multi-media technical resources to help you
- We investigate all quality concerns to ensure our products perform to the highest standards

If the product does not perform as described on this datasheet, we will offer a refund or replacement. For full details of the Abpromise, please visit <https://www.abcam.cn/abpromise> or contact our technical team.

Terms and conditions

- Guarantee only valid for products bought direct from Abcam or one of our authorized distributors