

Recombinant Human SLC25A11 protein ab152862

1 图像

描述		
产品名称	重组人SLC25A11蛋白	
表达系统	Wheat germ	
Accession	<u>Q02978</u>	
蛋白长度	Full length protein	
无动物成分	No	
性质	Recombinant	
种属	Human	
序列	MAATASAGAGGIDGKPRTSPKSVKFLFGGLAGMGATVQPL DLVKNRMQ LSGEGAKTREYKTSFHALTSILKAEGLRGIYTGLSAGLLRQA TYTTTRLG IYTVL FERLTGADGTPPGFLLKAVIGMTAGATGAFVGTPAEV ALIRMTAD GRLPADQRRGYKNVFNALIRITREEGVLTWRCIPTMARAV VVNAAQLA SYSQSKQFLLDSGYFSDNILCHFCASMISGLVTTAASMPVDI AKTRIQNM RMIDGKPEYKNGLDVLFKVVRYEGFFSLWKGFTPPYARLGPH TVLTFIFL EQMNKAYKRLFLSG	
预测分子量	60 kDa including tags	
氨基酸	1 to 314	

技术指标	
Our <b>Abpromise guarantee</b> covers the use of <b>ab152862</b> in the following tested applications.	
The application notes include recommended starting dilutions; optimal dilutions/concentrations should be determined by the end user.	
应用	ELISA Western blot SDS-PAGE
形式	Liquid
补充说明	

## 制备和贮存

### 稳定性和存储

Shipped on dry ice. Upon delivery aliquot and store at -80°C. Avoid freeze / thaw cycles.

pH: 8.00

Constituents: 0.31% Glutathione, 0.79% Tris HCl

## 常规信息

### 功能

Catalyzes the transport of 2-oxoglutarate across the inner mitochondrial membrane in an electroneutral exchange for malate or other dicarboxylic acids, and plays an important role in several metabolic processes, including the malate-aspartate shuttle, the oxoglutarate/isocitrate shuttle, in gluconeogenesis from lactate, and in nitrogen metabolism.

### 序列相似性

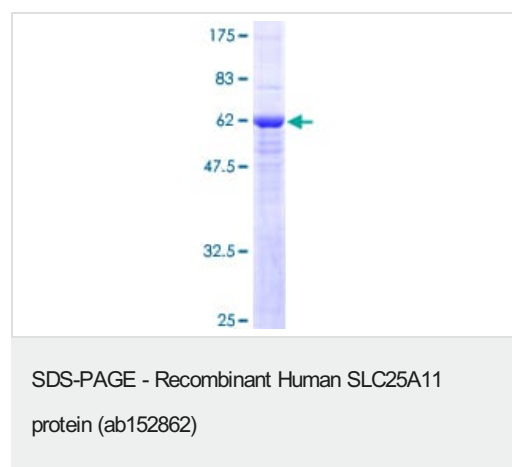
Belongs to the mitochondrial carrier family.

Contains 3 Solcar repeats.

### 细胞定位

Mitochondrion inner membrane.

## 图片



12.5% SDS-PAGE analysis of ab152862 stained with Coomassie Blue.

**Please note:** All products are "FOR RESEARCH USE ONLY. NOT FOR USE IN DIAGNOSTIC PROCEDURES"

## Our Abpromise to you: Quality guaranteed and expert technical support

- Replacement or refund for products not performing as stated on the datasheet
- Valid for 12 months from date of delivery
- Response to your inquiry within 24 hours
- We provide support in Chinese, English, French, German, Japanese and Spanish
- Extensive multi-media technical resources to help you
- We investigate all quality concerns to ensure our products perform to the highest standards

If the product does not perform as described on this datasheet, we will offer a refund or replacement. For full details of the Abpromise, please visit <https://www.abcam.cn/abpromise> or contact our technical team.

#### **Terms and conditions**

---

- Guarantee only valid for products bought direct from Abcam or one of our authorized distributors