

Recombinant human SIRT2 protein ab101132

5 图像

描述

产品名称	重组人SIRT2蛋白
生物活性	Specific Activity: 8000 RLU/min/ng.
纯度	> 70 % Densitometry. The purity of SIRT2 was determined to be > 70% by densitometry. Affinity purified.
表达系统	Baculovirus infected insect cells
Accession	<u>Q8IXJ6-2</u>
蛋白长度	Full length protein
无动物成分	No
性质	Recombinant
种属	Human
预测分子量	42 kDa including tags
氨基酸	2 to 352
标签	His tag N-Terminus

技术指标

Our **Abpromise guarantee** covers the use of **ab101132** in the following tested applications.

The application notes include recommended starting dilutions; optimal dilutions/concentrations should be determined by the end user.

应用	SDS-PAGE Functional Studies
形式	Liquid

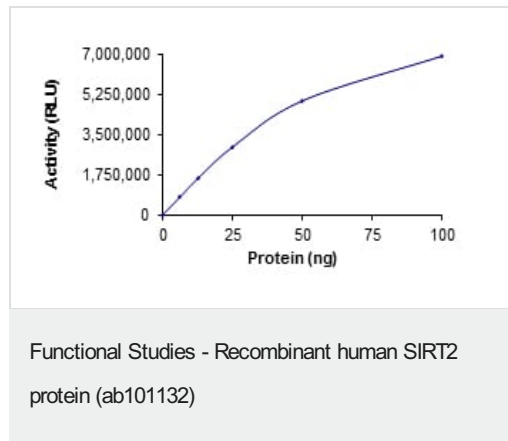
制备和贮存

稳定性和存储	Shipped on dry ice. Upon delivery aliquot and store at -80°C. Avoid freeze / thaw cycles. pH: 7.00 Preservative: 1.02% Imidazole Constituents: 0.00174% PMSF, 0.82% Sodium phosphate, 0.00385% DTT, 25% Glycerol (glycerin, glycerine), 1.74% Sodium chloride This product is an active protein and may elicit a biological response in vivo, handle with caution.
--------	--

常规信息

功能	NAD-dependent protein deacetylase, which deacetylates the 'Lys-40' of alpha-tubulin. Involved in the control of mitotic exit in the cell cycle, probably via its role in the regulation of cytoskeleton.
组织特异性	Widely expressed. Highly expressed in heart, brain and skeletal muscle, while it is weakly expressed in placenta and lung. Down-regulated in many gliomas suggesting that it may act as a tumor suppressor gene in human gliomas possibly through the regulation of microtubule network.
序列相似性	Belongs to the sirtuin family. Contains 1 deacetylase sirtuin-type domain.
发展阶段	Peaks during mitosis. After mitosis, it is probably degraded by the 26S proteasome.
翻译后修饰	Phosphorylated at the G2/M transition of the cell cycle.
细胞定位	Cytoplasm > cytoskeleton. Colocalizes with microtubules.

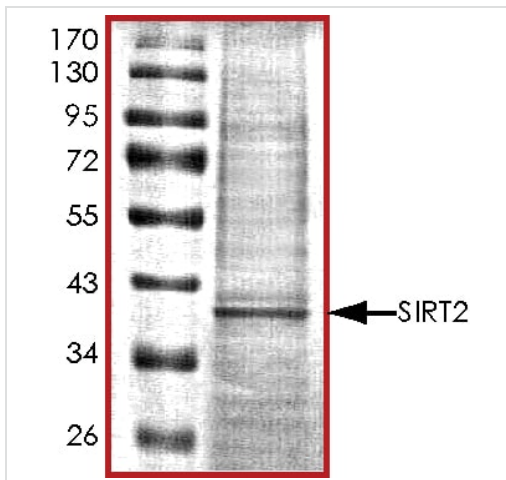
图片



The specific activity of SIRT2 (ab101132) was determined to be 7200 RLU/min/mg as per activity assay protocol

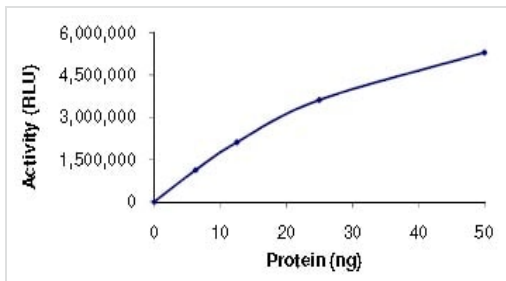


SDS PAGE analysis of ab101132



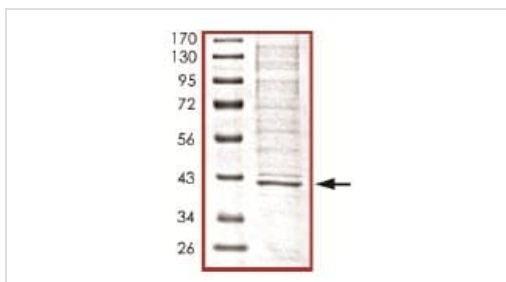
SDS PAGE analysis of ab101132

SDS-PAGE - Recombinant human SIRT2 protein (ab101132)



The Specific activity of ab101132 was determined to be 8000 RLU/min/mg.

Functional Studies - Recombinant human SIRT2 protein (ab101132)



SDS-PAGE showing ab101132 at approximately 42kDa.

SDS-PAGE - Recombinant human SIRT2 protein (ab101132)

Please note: All products are "FOR RESEARCH USE ONLY. NOT FOR USE IN DIAGNOSTIC PROCEDURES"

Our Abpromise to you: Quality guaranteed and expert technical support

- Replacement or refund for products not performing as stated on the datasheet
- Valid for 12 months from date of delivery

- Response to your inquiry within 24 hours
- We provide support in Chinese, English, French, German, Japanese and Spanish
- Extensive multi-media technical resources to help you
- We investigate all quality concerns to ensure our products perform to the highest standards

If the product does not perform as described on this datasheet, we will offer a refund or replacement. For full details of the Abpromise, please visit <https://www.abcam.cn/abpromise> or contact our technical team.

Terms and conditions

- Guarantee only valid for products bought direct from Abcam or one of our authorized distributors