

Recombinant human SHP1 protein ab61135

5 图像

描述	
产品名称	重组人SHP1蛋白
纯度	> 90 % Densitometry.
表达系统	Escherichia coli
蛋白长度	Full length protein
无动物成分	No
性质	Recombinant
种属	Human
标签	GST tag N-Terminus
技术指标	
Our <b>Abpromise guarantee</b> covers the use of <b>ab61135</b> in the following tested applications.	
The application notes include recommended starting dilutions; optimal dilutions/concentrations should be determined by the end user.	
应用	SDS-PAGE Functional Studies
形式	Liquid
制备和贮存	
稳定性和存储	Shipped on dry ice. Upon delivery aliquot and store at -80°C. Avoid freeze / thaw cycles. pH: 7.50 Constituents: 0.418% MOPS, 0.00174% PMSF, 0.00385% DTT, 30% Glycerol (glycerin, glycerine), 50% Sodium chloride This product is an active protein and may elicit a biological response in vivo, handle with caution.
常规信息	
功能	Plays a key role in hematopoiesis. This PTPase activity may directly link growth factor receptors and other signaling proteins through protein-tyrosine phosphorylation. The SH2 regions may

interact with other cellular components to modulate its own phosphatase activity against interacting substrates. Together with MTUS1, induces UBE2V2 expression upon angiotensin II stimulation.

#### 组织特异性

Isoform 1 is expressed in hematopoietic cells. Isoform 2 is expressed in non-hematopoietic cells.

#### 序列相似性

Belongs to the protein-tyrosine phosphatase family. Non-receptor class 2 subfamily.

Contains 2 SH2 domains.

Contains 1 tyrosine-protein phosphatase domain.

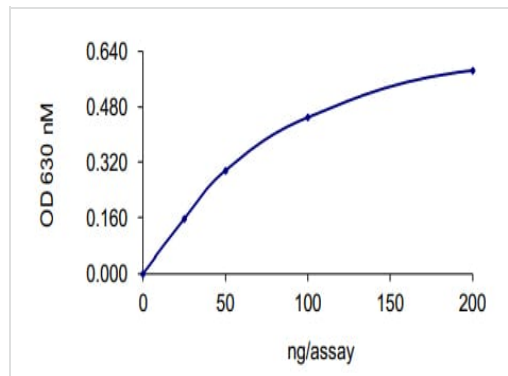
#### 翻译后修饰

Phosphorylated on serine and tyrosine residues.

#### 细胞定位

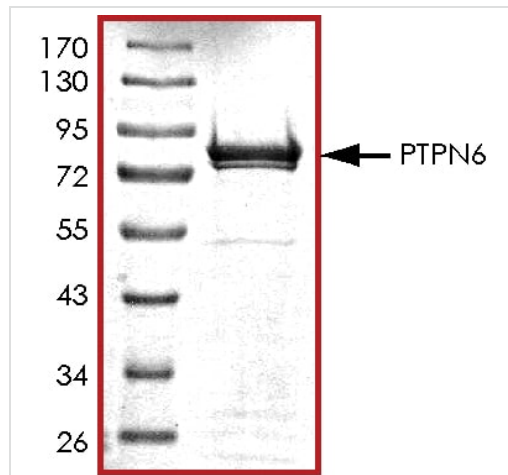
Cytoplasm. Nucleus. In neurons, translocates into the nucleus after treatment with angiotensin II.

#### 图片



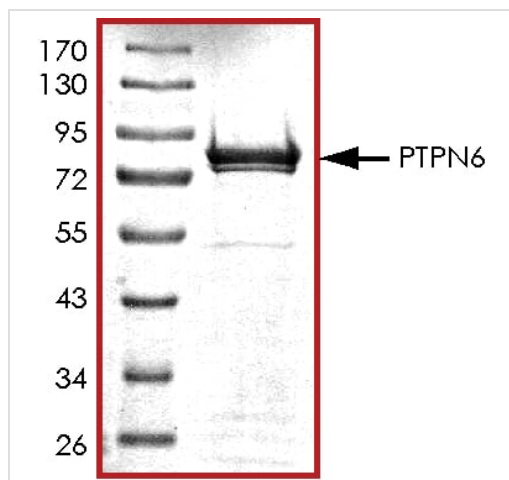
The specific activity of SHP1 (ab61135) was determined to be 1100 nmol phosphate released/min/mg as per activity assay protocol

Functional Studies - Recombinant human SHP1 protein (ab61135)



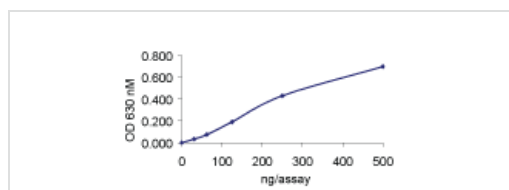
SDS PAGE analysis of ab61135

SDS-PAGE - Recombinant human SHP1 protein (ab61135)



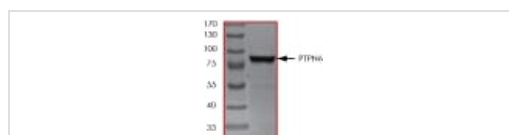
SDS PAGE analysis of ab61135

SDS-PAGE - Recombinant human SHP1 protein (ab61135)



Sample Kinase Activity Plot.

Functional Studies - Recombinant human SHP1 protein (ab61135)



ab61135 on SDS-PAGE, MW ~93 kDa.

SDS-PAGE - Recombinant human SHP1 protein (ab61135)

**Please note:** All products are "FOR RESEARCH USE ONLY. NOT FOR USE IN DIAGNOSTIC PROCEDURES"

### Our Abpromise to you: Quality guaranteed and expert technical support

- Replacement or refund for products not performing as stated on the datasheet
- Valid for 12 months from date of delivery
- Response to your inquiry within 24 hours
- We provide support in Chinese, English, French, German, Japanese and Spanish

- Extensive multi-media technical resources to help you
- We investigate all quality concerns to ensure our products perform to the highest standards

If the product does not perform as described on this datasheet, we will offer a refund or replacement. For full details of the Abpromise, please visit <https://www.abcam.cn/abpromise> or contact our technical team.

#### **Terms and conditions**

---

- Guarantee only valid for products bought direct from Abcam or one of our authorized distributors