

Recombinant human SHP1 protein ab51289

1 图像

描述

产品名称	重组人SHP1蛋白
生物活性	Specific activity: > 5,000 units/mg of SHP-1. [Unit Definition : One unit will hydrolyze 1 nanomole of p-nitrophenylphosphatate per minute at pH 7.5 at 37°C using 10mM of substrate.]
纯度	> 95 % SDS-PAGE. ab51289 was purified by FPLC gel-filtration chromatography, after refolding of the isolated inclusion bodies in a redox buffer.
表达系统	Escherichia coli
Accession	<u>P29350</u>
蛋白长度	Protein fragment
无动物成分	No
性质	Recombinant
种属	Human
序列	M-GFWEEFES LQKQEVKNLH QRLEGQRPEN KGKNRYKNIL PFDHSRVILQ GRDSNIPGSD YINANYIKNQ LLGPDENAKT YIASQGCLEA TVNDFWQMAW QENSRVIVMT TREVEKGRNK CVPYWPEVGM QRAYGPYSVT NCGEHDTEY KLRTLQVSPL DNGDLIREIW HYQYLSWPDH GVPSEPGGVL SFLDQINQRQ ESLPHAGPII VHCSAGIGRT GTIIVIDMLM ENISTKGLDC DIDIQKTIQM VRAQRSGMVQ TEAQYKFIYV AIAQFIETTK KKLEVLQSQK GQSEYGNIT Y
氨基酸	243 to 541

技术指标

Our **Abpromise guarantee** covers the use of **ab51289** in the following tested applications.

The application notes include recommended starting dilutions; optimal dilutions/concentrations should be determined by the end user.

应用	Phosphatase Activity SDS-PAGE
形式	Liquid

补充说明

The catalytic domain of SHP-1 was overexpressed as insoluble protein aggregates (inclusion bodies).

制备和贮存

稳定性和存储

Shipped at 4°C. Upon delivery aliquot and store at -20°C. Avoid freeze / thaw cycles.

pH: 7.50

Constituents: 0.0156% Beta mercaptoethanol, 0.0154% DTT, 0.395% Tris HCl, 0.0292% EDTA, 20% Glycerol (glycerin, glycerine)

This product is an active protein and may elicit a biological response in vivo, handle with caution.

常规信息

功能

Plays a key role in hematopoiesis. This PTPase activity may directly link growth factor receptors and other signaling proteins through protein-tyrosine phosphorylation. The SH2 regions may interact with other cellular components to modulate its own phosphatase activity against interacting substrates. Together with MTUS1, induces UBE2V2 expression upon angiotensin II stimulation.

组织特异性

Isoform 1 is expressed in hematopoietic cells. Isoform 2 is expressed in non-hematopoietic cells.

序列相似性

Belongs to the protein-tyrosine phosphatase family. Non-receptor class 2 subfamily.

Contains 2 SH2 domains.

Contains 1 tyrosine-protein phosphatase domain.

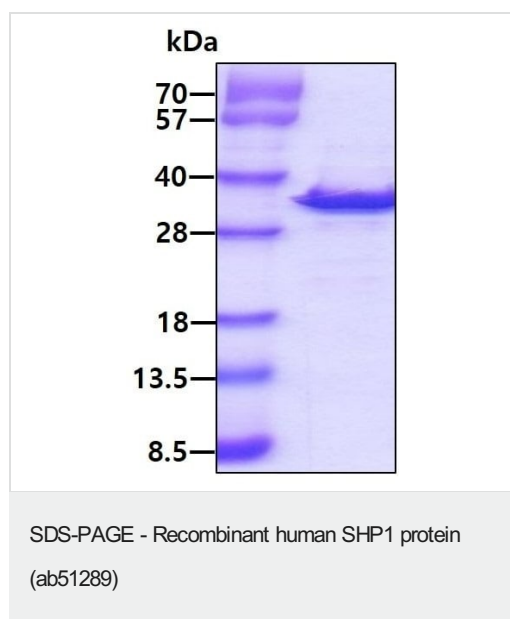
翻译后修饰

Phosphorylated on serine and tyrosine residues.

细胞定位

Cytoplasm. Nucleus. In neurons, translocates into the nucleus after treatment with angiotensin II.

图片



Analysis of ab51289 (3 µg) by SDS-PAGE under reducing condition and visualized by Coomassie Blue stain.

Please note: All products are "FOR RESEARCH USE ONLY. NOT FOR USE IN DIAGNOSTIC PROCEDURES"

Our Abpromise to you: Quality guaranteed and expert technical support

- Replacement or refund for products not performing as stated on the datasheet
- Valid for 12 months from date of delivery
- Response to your inquiry within 24 hours

- We provide support in Chinese, English, French, German, Japanese and Spanish
- Extensive multi-media technical resources to help you
- We investigate all quality concerns to ensure our products perform to the highest standards

If the product does not perform as described on this datasheet, we will offer a refund or replacement. For full details of the Abpromise, please visit <https://www.abcam.cn/abpromise> or contact our technical team.

Terms and conditions

- Guarantee only valid for products bought direct from Abcam or one of our authorized distributors