

Recombinant Human SGSH/HSS protein ab116779

1 图像

描述	
产品名称	重组人SGSH/HSS蛋白
表达系统	Wheat germ
Accession	<u>P51688</u>
蛋白长度	Full length protein
无动物成分	No
性质	Recombinant
种属	Human
序列	MSCPVPACCALLLVGLCRARPRNALLLADDGGFESGAYNN SAIATPHL DALARRSLLFRNAFTSVSSCSPSRASLLTGLPQHQNGLYGLH QDVHHFNS FDKVRSLPLLLSQAGVRTGIIGKKHVGPEVYPDFAYTEEN GSVLQVGR NITRIKLLVRKFLQTQDDRPFFLYVAFHDPHRCGHSQPQYGT FCEKFGNG ESGMGRIPDWTPQAYDPLDVLVPYFVPNTPAARADLAAQYTT VGRMDQGV GLVLQELRDAGVLNDTLVIFTSDNGIPFPGRTNLYWPGTAE PLLVSSPE HPKRWGQVSEAYVSLDLTPTILDWFSIPYPSYAIFGSKTIH LTGRSLLP ALEAEPLWATVFGSQSHHEVTMSYPMRSVQHRHFRVHNLNF KMPFPIDQ DFYVSPTFQDLLNRTTAGQPTGWYKDLRHYYYRARWELYDRS RDPHETQN LATDPRFAQLLEMLRDQLAKWQWETHDPWVCAPDGVLEEKLS PQCQPLHN EL
预测分子量	81 kDa including tags
氨基酸	1 to 502

技术指标

Our **Abpromise guarantee** covers the use of **ab116779** in the following tested applications.

The application notes include recommended starting dilutions; optimal dilutions/concentrations should be determined by the end user.

应用	Western blot
	SDS-PAGE
	ELISA
形式	Liquid
补充说明	This product was previously labelled as SGSH.

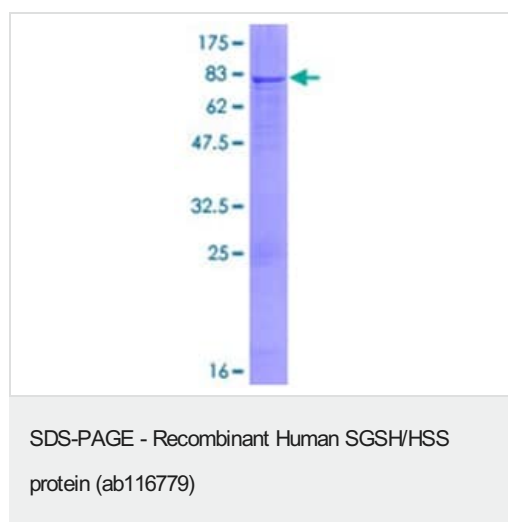
制备和贮存

稳定性和存储	Shipped on dry ice. Upon delivery aliquot and store at -80°C. Avoid freeze / thaw cycles.
	pH: 8.00
	Constituents: 0.3% Glutathione, 0.79% Tris HCl

常规信息

疾病相关	Defects in SGSH are the cause of mucopolysaccharidosis type 3A (MPS3A) [MIM:252900]; also known as Sanfilippo syndrome A. MPS3A is a severe form of mucopolysaccharidosis type 3, an autosomal recessive lysosomal storage disease due to impaired degradation of heparan sulfate. MPS3 is characterized by severe central nervous system degeneration, but only mild somatic disease. Onset of clinical features usually occurs between 2 and 6 years; severe neurologic degeneration occurs in most patients between 6 and 10 years of age, and death occurs typically during the second or third decade of life. MPS3A is characterized by earlier onset, rapid progression of symptoms and shorter survival.
序列相似性	Belongs to the sulfatase family.
翻译后修饰	The conversion to 3-oxoalanine (also known as C-formylglycine, FGly), of a serine or cysteine residue in prokaryotes and of a cysteine residue in eukaryotes, is critical for catalytic activity.
细胞定位	Lysosome.

图片



12.5% SDS-PAGE showing ab116779 at approximately 81.29kDa. Stained with Coomassie Blue.

Please note: All products are "FOR RESEARCH USE ONLY. NOT FOR USE IN DIAGNOSTIC PROCEDURES"

Our Abpromise to you: Quality guaranteed and expert technical support

- Replacement or refund for products not performing as stated on the datasheet
- Valid for 12 months from date of delivery
- Response to your inquiry within 24 hours
- We provide support in Chinese, English, French, German, Japanese and Spanish
- Extensive multi-media technical resources to help you
- We investigate all quality concerns to ensure our products perform to the highest standards

If the product does not perform as described on this datasheet, we will offer a refund or replacement. For full details of the Abpromise, please visit <https://www.abcam.cn/abpromise> or contact our technical team.

Terms and conditions

- Guarantee only valid for products bought direct from Abcam or one of our authorized distributors