

# Recombinant Human Septin 2 protein ab99296

[1 References](#) [1 图像](#)

### 描述

产品名称	重组人Septin 2蛋白
纯度	> 90 % SDS-PAGE. ab99296 is purified using conventional chromatography techniques.
表达系统	Escherichia coli
Accession	<b><u>Q15019</u></b>
蛋白长度	Full length protein
无动物成分	No
性质	Recombinant
种属	Human
序列	<p><b>MGSSHHHHHSSGLVPRGSHMSKQPTQFINPETPGYVGF</b>  <b>ANLPNQVHRK</b>  <b>SVKKGFEFTLMVVGESGLGKSTLINSFLTDLYPERVISGAA</b>  <b>EKIERTVQ</b>  <b>IEASTVEIEERGVLRLTVVDTPGYGDAINCRDCFKTIISYI</b>  <b>DEQFERYL</b>  <b>HDESGLNRRHIIDNRVHCCFYFISPFHGHLKPLDVAFMKAIH</b>  <b>NKVNIVPV</b>  <b>IAKADTLTLKERERLKKRILDEIEEHNIKIYHLPDAESDEDE</b>  <b>DFKEQTRL</b>  <b>LKASIPFSVVGSNQLIEAKGKKVRGRLYPWGVVEVENPEHND</b>  <b>FLKLRTML</b>  <b>ITHMQDLQEVTQDLHYENFRSERLKRGRKVENEDMNKDQIL</b>  <b>LEKEAELR RMQEMIARMQAQMOMQGGDGDGGALGHHV</b></p>
预测分子量	44 kDa including tags
氨基酸	1 to 361
标签	His tag N-Terminus

### 技术指标

Our **Abpromise guarantee** covers the use of **ab99296** in the following tested applications.

The application notes include recommended starting dilutions; optimal dilutions/concentrations should be determined by the end user.

应用 SDS-PAGE

Mass Spectrometry

**质谱法**

MALDI-TOF

**形式**

Liquid

**制备和贮存**

---

**稳定性和存储**

Shipped at 4°C. Upon delivery aliquot and store at -20°C or -80°C. Avoid repeated freeze / thaw cycles.

pH: 8.00

Constituents: 0.0154% DTT, 0.316% Tris HCl, 10% Glycerol (glycerin, glycerine), 0.58% Sodium chloride

**常规信息**

---

**功能**

Filament-forming cytoskeletal GTPase. Required for normal organization of the actin cytoskeleton. Plays a role in the biogenesis of polarized columnar-shaped epithelium by maintaining polyglutamylated microtubules, thus facilitating efficient vesicle transport, and by impeding MAP4 binding to tubulin. Required for the progression through mitosis. Forms a scaffold at the midplane of the mitotic spindle required to maintain CENPE localization at kinetochores and consequently chromosome congression. During anaphase, may be required for chromosome segregation and spindle elongation. Plays a role in ciliogenesis and collective cell movements. In cilia, required for the integrity of the diffusion barrier at the base of the primary cilium that prevents diffusion of transmembrane proteins between the cilia and plasma membranes: probably acts by regulating the assembly of the tectonic-like complex (also named B9 complex) by localizing TMEM231 protein. May play a role in the internalization of 2 intracellular microbial pathogens, *Listeria monocytogenes* and *Shigella flexneri*.

**组织特异性**

Widely expressed. Up-regulated in liver cancer.

**序列相似性**

Belongs to the TRAFAC class TrmE-Era-EngA-EngB-Septin-like GTPase superfamily. Septin GTPase family.

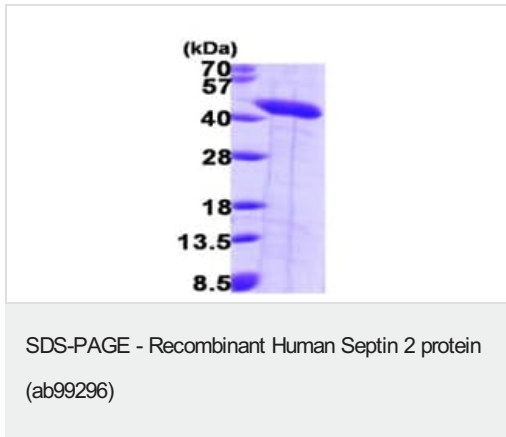
Contains 1 septin-type G (guanine nucleotide-binding) domain.

**细胞定位**

Cytoplasm. Cytoplasm, cytoskeleton. Cytoplasm, cytoskeleton, spindle. Chromosome, centromere, kinetochore. Cleavage furrow. Midbody. Cytoplasm, cell cortex. Cell projection, cilium membrane. In metaphase cells, localized within the microtubule spindle. At the metaphase plate, in close apposition to the kinetochores of the congressed chromosomes. In cells undergoing cytokinesis, localized to the midbody, the ingressing cleavage furrow, and the central spindle. During bacterial infection, displays a collar shape structure next to actin at the pole of invading bacteria. In epithelial cells, colocalizes with polyglutamylated tubulin around the trans-Golgi network, as well as juxtanuclear and proximal Golgi apparatus. Localizes at the base of the cilia near the morphological distinction between the cilia and plasma membranes.

**图片**

---



15% SDS-PAGE showing ab99296 (3 $\mu$ g).

**Please note:** All products are "FOR RESEARCH USE ONLY. NOT FOR USE IN DIAGNOSTIC PROCEDURES"

### Our Abpromise to you: Quality guaranteed and expert technical support

---

- Replacement or refund for products not performing as stated on the datasheet
- Valid for 12 months from date of delivery
- Response to your inquiry within 24 hours
- We provide support in Chinese, English, French, German, Japanese and Spanish
- Extensive multi-media technical resources to help you
- We investigate all quality concerns to ensure our products perform to the highest standards

If the product does not perform as described on this datasheet, we will offer a refund or replacement. For full details of the Abpromise, please visit <https://www.abcam.cn/abpromise> or contact our technical team.

### Terms and conditions

---

- Guarantee only valid for products bought direct from Abcam or one of our authorized distributors