

Recombinant Human SEC13L1 protein ab105635

1 图像

描述

产品名称	重组人SEC13L1蛋白
纯度	> 95 % SDS-PAGE. Purified using conventional chromatography techniques.
表达系统	Escherichia coli
Accession	<u>P55735</u>
蛋白长度	Full length protein
无动物成分	No
性质	Recombinant
种属	Human
序列	<p>MGSSHHHHH SSGLVPRGSHMVSINTVDT SHEDMIHDAQ MDYYGTRLAT CSSDRSVKIF DVRNGGQILI ADLRGHEGPV WQVAWAHPMY GNILASCSYD RKVIIWREEN GTWEKSHEHA GHDSSVNSVC WAPHDYGLIL ACGSSDGAIS LLTYTGEGQW EVKINNAHT IGCNAVSWAPAVVPGSLIDH PSGQKPNYIK RFASGGCDNL IKLWKEEEDG QWKEEQKLEA HSDWVRDVAW APSIGLPTST IASCSQDGRV FIWTCDDASS NTWSPKLLHK FNDVVWHVSW SITANILAVS GGDNKVTLWK ESVDGQWVCI SDVNKGQGSV SASVTEGQQN EQ</p>
预测分子量	38 kDa including tags
氨基酸	1 to 322
标签	His tag N-Terminus

技术指标

Our **Abpromise guarantee** covers the use of **ab105635** in the following tested applications.

The application notes include recommended starting dilutions; optimal dilutions/concentrations should be determined by the end user.

应用	SDS-PAGE
	Mass Spectrometry
质谱法	MALDI-TOF

形式 Liquid

制备和贮存

稳定性和存储

Shipped at 4°C. Store at +4°C short term (1-2 weeks). Upon delivery aliquot. Store at -20°C or -80°C. Avoid freeze / thaw cycle.

pH: 8.00

Constituents: 0.0154% DTT, 0.316% Tris HCl, 10% Glycerol (glycerin, glycerine), 0.58% Sodium chloride

常规信息

功能

Functions as a component of the nuclear pore complex (NPC) and the COPII coat. At the endoplasmic reticulum, SEC13 is involved in the biogenesis of COPII-coated vesicles.

序列相似性

Belongs to the WD repeat SEC13 family.

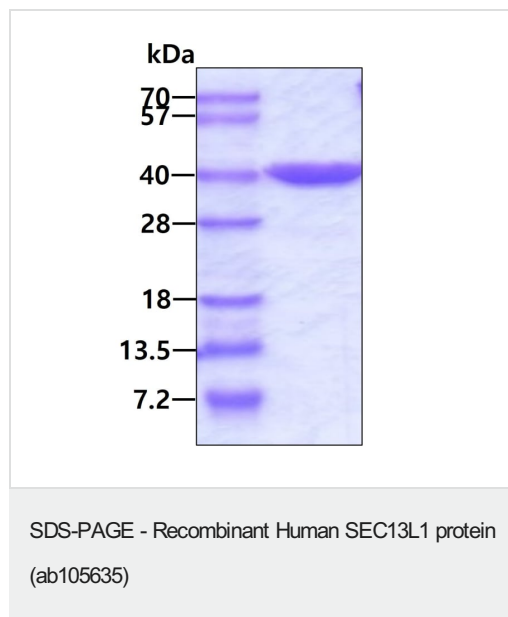
Contains 6 WD repeats.

细胞定位

Cytoplasmic vesicle > COPII-coated vesicle membrane. Endoplasmic reticulum membrane.

Nucleus > nuclear pore complex. In interphase, localizes at both sides of the NPC.

图片



3ug by SDS-PAGE under reducing condition and visualized by coomassie blue stain.

Please note: All products are "FOR RESEARCH USE ONLY. NOT FOR USE IN DIAGNOSTIC PROCEDURES"

Our Abpromise to you: Quality guaranteed and expert technical support

- Replacement or refund for products not performing as stated on the datasheet
- Valid for 12 months from date of delivery
- Response to your inquiry within 24 hours

- We provide support in Chinese, English, French, German, Japanese and Spanish
- Extensive multi-media technical resources to help you
- We investigate all quality concerns to ensure our products perform to the highest standards

If the product does not perform as described on this datasheet, we will offer a refund or replacement. For full details of the Abpromise, please visit <https://www.abcam.cn/abpromise> or contact our technical team.

Terms and conditions

- Guarantee only valid for products bought direct from Abcam or one of our authorized distributors