

Product datasheet

Recombinant Human SBDS protein ab99957

1 图像

描述

产品名称	重组人SBDS蛋白
纯度	> 95 % SDS-PAGE. ab99957 is purified using conventional chromatography techniques.
表达系统	Escherichia coli
Accession	<u>Q9Y3A5</u>
蛋白长度	Full length protein
无动物成分	No
性质	Recombinant
种属	Human
序列	<p>MGSSHHHHHSSGLVPRGSHMSIFTPTNQIRLTNAVAVRM KRAGKRFEIA CYKNKVVGWRSVGEKDLDEVLQTHSVFVNVSKGQVAKKEDLI SAFGTDDQ TEICKQILTKGEVQVSDKERHTQLEQMFRDIATIVADKCVNP ETKRPYTV ILIERAMKDIHYSVKTNKSTKQQALEVIKQLKEKMKIERAHM RLRFILPV NEGKKLKEKLPKLIKVIESEDYGQLEIVCLIDPGCFREIDE LIKKETKG KGSLEVLNLKDVEEGDEKFE</p>
预测分子量	31 kDa including tags
氨基酸	1 to 250
标签	His tag N-Terminus

技术指标

Our **Abpromise guarantee** covers the use of **ab99957** in the following tested applications.

The application notes include recommended starting dilutions; optimal dilutions/concentrations should be determined by the end user.

应用	SDS-PAGE
	Mass Spectrometry
质谱法	MALDI-TOF
形式	Liquid

补充说明

Previously labelled as Shwachman Bodian-Diamond syndrome.

制备和贮存

稳定性和存储

Shipped at 4°C. Upon delivery aliquot and store at -20°C or -80°C. Avoid repeated freeze / thaw cycles.

pH: 8.00

Constituents: 0.0308% DTT, 0.316% Tris HCl, 0.00292% EDTA, 20% Glycerol (glycerin, glycerine), 0.29% Sodium chloride

常规信息

功能

Required for the assembly of mature ribosomes and ribosome biogenesis. Together with EFTUD1, triggers the GTP-dependent release of EIF6 from 60S pre-ribosomes in the cytoplasm, thereby activating ribosomes for translation competence by allowing 80S ribosome assembly and facilitating EIF6 recycling to the nucleus, where it is required for 60S rRNA processing and nuclear export. Required for normal levels of protein synthesis. May play a role in cellular stress resistance. May play a role in cellular response to DNA damage. May play a role in cell proliferation.

组织特异性

Widely expressed.

疾病相关

Defects in SBDS are the cause of Shwachman-Diamond syndrome (SDS) [MIM:260400]. SDS is an autosomal recessive disorder characterized by pancreatic exocrine insufficiency, hematologic dysfunction, and skeletal abnormalities.

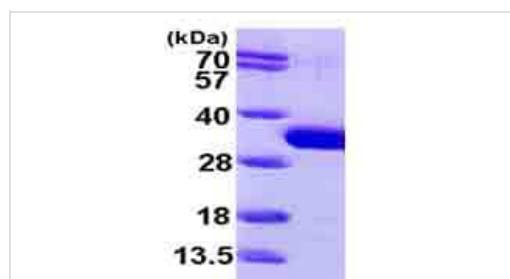
序列相似性

Belongs to the SDO1/SBDS family.

细胞定位

Cytoplasm. Nucleus > nucleolus. Nucleus > nucleoplasm. Cytoplasm > cytoskeleton > spindle. Primarily detected in the cytoplasm, and at low levels in nucleus and nucleolus (PubMed:19602484 and PubMed:17475909). Detected in the nucleolus during G1 and G2 phase of the cell cycle, and diffusely distributed in the nucleus during S phase. Detected at the mitotic spindle. Colocalizes with the microtubule organizing center during interphase.

图片



15% SDS-PAGE showing ab99957 (3µg).

SDS-PAGE - Recombinant Human SBDS protein
(ab99957)

Please note: All products are "FOR RESEARCH USE ONLY. NOT FOR USE IN DIAGNOSTIC PROCEDURES"

Our Abpromise to you: Quality guaranteed and expert technical support

- Replacement or refund for products not performing as stated on the datasheet
- Valid for 12 months from date of delivery
- Response to your inquiry within 24 hours

- We provide support in Chinese, English, French, German, Japanese and Spanish
- Extensive multi-media technical resources to help you
- We investigate all quality concerns to ensure our products perform to the highest standards

If the product does not perform as described on this datasheet, we will offer a refund or replacement. For full details of the Abpromise, please visit <https://www.abcam.cn/abpromise> or contact our technical team.

Terms and conditions

- Guarantee only valid for products bought direct from Abcam or one of our authorized distributors