

## Product datasheet

# Recombinant Human S100 alpha 2/S100A2 protein ab104821

### 1 图像

#### 描述

|           |  |
|-----------|--|
| 产品名称      | 重组人S100 alpha 2/S100A2蛋白   |
| 纯度        | > 90 % SDS-PAGE.<br>ab104821 was purified using conventional chromatography techniques.  |
| 表达系统      | Escherichia coli   |
| Accession | <b><u>P29034</u></b>   |
| 蛋白长度      | Full length protein  |
| 无动物成分     | No   |
| 性质        | Recombinant  |
| 种属        | Human  |
| 序列        | <b>MGSSHHHHHSSGLVPRGSHMCSSLEQALAVLVTTFHKYS<br/>CQEGDKFKLS<br/>KGEMKELLHKELPSFVGEKVDEEGLKKLMSGSLDENSQQVDF<br/>QEYAVFLA LITVMCNDFFGCPDRP</b> |
| 预测分子量     | 13 kDa including tags  |
| 氨基酸       | 2 to 98  |
| 标签        | His tag N-Terminus   |

#### 技术指标

Our **Abpromise guarantee** covers the use of **ab104821** in the following tested applications.

The application notes include recommended starting dilutions; optimal dilutions/concentrations should be determined by the end user.

|      |  |
|------|--|
| 应用   | SDS-PAGE<br>Mass Spectrometry                        |
| 质谱法  | MALDI-TOF  |
| 形式   | Liquid   |
| 补充说明 | This product was previously labelled as S100 alpha 2 |

#### 制备和贮存

## 稳定性和存储

Shipped at 4°C. Upon delivery aliquot and store at -20°C or -80°C. Avoid repeated freeze / thaw cycles.

pH: 8.00

Constituents: 0.077% DTT, 0.316% Tris HCl, 30% Glycerol (glycerin, glycerine), 1.16% Sodium chloride

## 常规信息

### 功能

May function as calcium sensor and modulator, contributing to cellular calcium signaling. May function by interacting with other proteins, such as TPR-containing proteins, and indirectly play a role in many physiological processes. May also play a role in suppressing tumor cell growth.

### 组织特异性

A subset of epithelial cells including normal human mammary epithelial cells and keratinocytes.

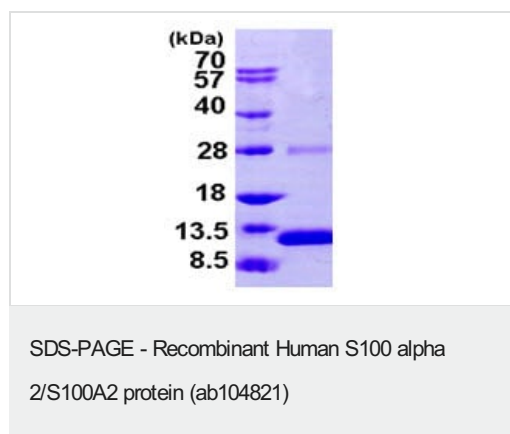
### 序列相似性

Belongs to the S-100 family.  
Contains 2 EF-hand domains.

### 发展阶段

Preferentially expressed in normal human mammary epithelial cells as opposed to tumor-derived ones. The level of S100L was shown to correlate inversely with tumor progression.

## 图片



15% SDS-PAGE analysis of 3µg ab104821.

**Please note:** All products are "FOR RESEARCH USE ONLY. NOT FOR USE IN DIAGNOSTIC PROCEDURES"

## Our Abpromise to you: Quality guaranteed and expert technical support

- Replacement or refund for products not performing as stated on the datasheet
- Valid for 12 months from date of delivery
- Response to your inquiry within 24 hours
- We provide support in Chinese, English, French, German, Japanese and Spanish
- Extensive multi-media technical resources to help you
- We investigate all quality concerns to ensure our products perform to the highest standards

If the product does not perform as described on this datasheet, we will offer a refund or replacement. For full details of the Abpromise, please visit <https://www.abcam.cn/abpromise> or contact our technical team.

## Terms and conditions

---

- Guarantee only valid for products bought direct from Abcam or one of our authorized distributors