

## Product datasheet

# Recombinant Human RUNX1 / AML1 protein ab112260

### 1 图像

#### 描述

产品名称	重组人RUNX1 / AML1蛋白
表达系统	Wheat germ
Accession	<b>Q01196</b>
蛋白长度	Protein fragment
无动物成分	No
性质	Recombinant
种属	Human
序列	RVSPHHPAPTPNPRASLNHSTAFNPQPQSQMQDTRQIQSPSP WSYDQSYQ YLGSIASPSVHPATPISPGRASGMTTLSAELSSRLSTAPDLT AFSDPRQF P
预测分子量	37 kDa including tags
氨基酸	210 to 311
标签	GST tag N-Terminus

#### 技术指标

Our **Abpromise guarantee** covers the use of **ab112260** in the following tested applications.

The application notes include recommended starting dilutions; optimal dilutions/concentrations should be determined by the end user.

应用	Western blot SDS-PAGE ELISA
形式	Liquid

#### 制备和贮存

稳定性和存储	Shipped on dry ice. Upon delivery aliquot and store at -80°C. Avoid freeze / thaw cycles. pH: 8.00 Constituents: 0.31% Glutathione, 0.79% Tris HCl
--------	--

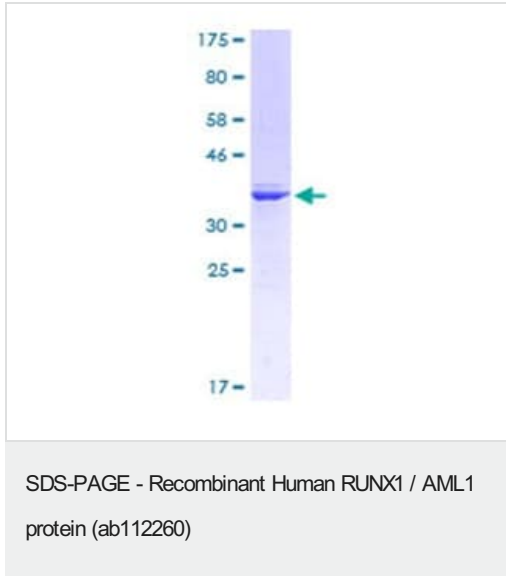
## 常规信息

---

<b>功能</b>	CBF binds to the core site, 5'-PYGPYGGT-3', of a number of enhancers and promoters, including murine leukemia virus, polyomavirus enhancer, T-cell receptor enhancers, LCK, IL-3 and GM-CSF promoters. The alpha subunit binds DNA and appears to have a role in the development of normal hematopoiesis. Isoform AML-1L interferes with the transactivation activity of RUNX1. Acts synergistically with ELF4 to transactivate the IL-3 promoter and with ELF2 to transactivate the mouse BLK promoter. Inhibits MYST4-dependent transcriptional activation.
<b>组织特异性</b>	Expressed in all tissues examined except brain and heart. Highest levels in thymus, bone marrow and peripheral blood.
<b>疾病相关</b>	<p>Note=A chromosomal aberration involving RUNX1/AML1 is a cause of M2 type acute myeloid leukemia (AML-M2). Translocation t(8;21)(q22;q22) with RUNX1T1.</p> <p>Note=A chromosomal aberration involving RUNX1/AML1 is a cause of therapy-related myelodysplastic syndrome (T-MDS). Translocation t(3;21)(q26;q22) with EAP or MECOM.</p> <p>Note=A chromosomal aberration involving RUNX1/AML1 is a cause of chronic myelogenous leukemia (CML). Translocation t(3;21)(q26;q22) with EAP or MECOM.</p> <p>Note=A chromosomal aberration involving RUNX1/AML1 is found in childhood acute lymphoblastic leukemia (ALL). Translocation t(12;21)(p13;q22) with TEL. The translocation fuses the 3'-end of TEL to the alternate 5'-exon of AML-1H.</p> <p>Note=A chromosomal aberration involving RUNX1 is found in acute leukemia. Translocation t(11,21)(q13;q22) that forms a MACROD1-RUNX1 fusion protein.</p> <p>Defects in RUNX1 are the cause of familial platelet disorder with associated myeloid malignancy (FPDMM) [MIM:601399]. FPDMM is an autosomal dominant disease characterized by qualitative and quantitative platelet defects, and propensity to develop acute myelogenous leukemia.</p> <p>Note=A chromosomal aberration involving RUNX1/AML1 is found in therapy-related myeloid malignancies. Translocation t(16;21)(q24;q22) that forms a RUNX1-CBFA2T3 fusion protein.</p> <p>Note=A chromosomal aberration involving RUNX1/AML1 is a cause of chronic myelomonocytic leukemia. Inversion inv(21)(q21;q22) with USP16.</p>
<b>序列相似性</b>	Contains 1 Runt domain.
<b>结构域</b>	A proline/serine/threonine rich region at the C-terminus is necessary for transcriptional activation of target genes.
<b>翻译后修饰</b>	Phosphorylated in its C-terminus upon IL-6 treatment. Phosphorylation enhances interaction with MYST3. Methylated.
<b>细胞定位</b>	Nucleus.

## 图片

---



Coomassie Blue stained 12.5% SDS page analysis of ab112260

**Please note:** All products are "FOR RESEARCH USE ONLY. NOT FOR USE IN DIAGNOSTIC PROCEDURES"

### Our Abpromise to you: Quality guaranteed and expert technical support

---

- Replacement or refund for products not performing as stated on the datasheet
- Valid for 12 months from date of delivery
- Response to your inquiry within 24 hours
- We provide support in Chinese, English, French, German, Japanese and Spanish
- Extensive multi-media technical resources to help you
- We investigate all quality concerns to ensure our products perform to the highest standards

If the product does not perform as described on this datasheet, we will offer a refund or replacement. For full details of the Abpromise, please visit <https://www.abcam.cn/abpromise> or contact our technical team.

### Terms and conditions

---

- Guarantee only valid for products bought direct from Abcam or one of our authorized distributors