

Recombinant Human RPA32/RPA2 protein ab101216

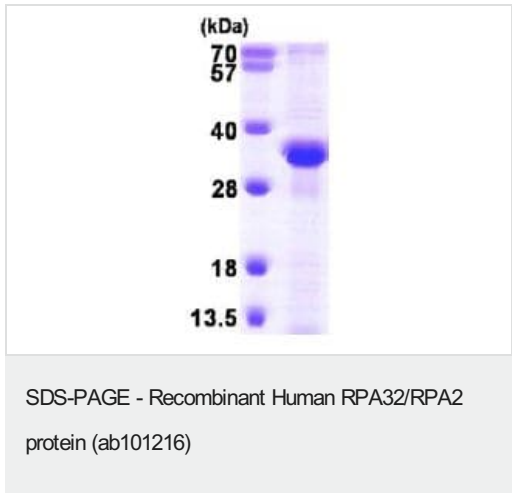
1 图像

描述	
产品名称	重组人RPA32/RPA2蛋白
纯度	> 85 % SDS-PAGE. ab101216 was purified using anion-exchange chromatography (DEAE sepharose resin) and gel-filtration chromatography (Sephacryl S-200) with 20mM Tris pH 7.5, 2mM EDTA.
表达系统	Escherichia coli
Accession	<u>P15927</u>
蛋白长度	Full length protein
无动物成分	No
性质	Recombinant
种属	Human
序列	MGSSHHHHHHSSGLVPRGSHMGSMWNSGFESYSSSYGGA GGYTQSPGGF GSPAPSQAEEKSRARAQHIVPCTISQLLSATLVDEVFRIGNV EISQVTIV GIIRHAEKAPTNIIVYKIDDMTAAPMDVRQWVDTDDTSSENTV VPPETYVK VAGHLRSFQNKKSLVAFKIMPLEDMNEFTTHILEVINAHMVL SKANSQPS AGRAPISNPGMSEAGNFGGNSFMPANGLTVAQNQVLNLIKAC PRPEGLNF QDLKNQLKHMSVSSIKQAVDFLSNEGHIYSTVDDDFHKSTDA E
预测分子量	32 kDa including tags
氨基酸	1 to 270
标签	His tag N-Terminus

技术指标	
Our Abpromise guarantee covers the use of ab101216 in the following tested applications.	
The application notes include recommended starting dilutions; optimal dilutions/concentrations should be determined by the end user.	
应用	SDS-PAGE Mass Spectrometry

质谱法	MALDI-TOF
形式	Liquid
制备和贮存	
稳定性和存储	<p>Shipped at 4°C. Store at +4°C short term (1-2 weeks). Upon delivery aliquot. Store at -20°C or -80°C. Avoid freeze / thaw cycle.</p> <p>pH: 8.00</p> <p>Constituents: 0.0154% DTT, 0.316% Tris HCl, 10% Glycerol (glycerin, glycerine), 0.58% Sodium chloride</p>
常规信息	
功能	<p>Required for DNA recombination, repair and replication. The activity of RP-A is mediated by single-stranded DNA binding and protein interactions.</p> <p>Functions as component of the alternative replication protein A complex (aRPA). aRPA binds single-stranded DNA and probably plays a role in DNA repair; it does not support chromosomal DNA replication and cell cycle progression through S-phase. In vitro, aRPA cannot promote efficient priming by DNA polymerase alpha but supports DNA polymerase delta synthesis in the presence of PCNA and replication factor C (RFC), the dual incision/excision reaction of nucleotide excision repair and RAD51-dependent strand exchange.</p>
翻译后修饰	<p>Phosphorylated in a cell-cycle-dependent manner (from the S phase until mitosis).</p> <p>Phosphorylated by ATR upon DNA damage, which promotes its translocation to nuclear foci. Can be phosphorylated in vitro by PRKDC/DNA-PK in the presence of Ku and DNA, and by CDK1.</p>
细胞定位	Nucleus. Nucleus > PML body. Also present in PML nuclear bodies. Redistributes to discrete nuclear foci upon DNA damage.

图片



ab101216 at 3 µg analysed by 15% SDS PAGE.

Please note: All products are "FOR RESEARCH USE ONLY. NOT FOR USE IN DIAGNOSTIC PROCEDURES"

Our Abpromise to you: Quality guaranteed and expert technical support

- Replacement or refund for products not performing as stated on the datasheet
- Valid for 12 months from date of delivery
- Response to your inquiry within 24 hours

- We provide support in Chinese, English, French, German, Japanese and Spanish
- Extensive multi-media technical resources to help you
- We investigate all quality concerns to ensure our products perform to the highest standards

If the product does not perform as described on this datasheet, we will offer a refund or replacement. For full details of the Abpromise, please visit <https://www.abcam.cn/abpromise> or contact our technical team.

Terms and conditions

- Guarantee only valid for products bought direct from Abcam or one of our authorized distributors