

Recombinant human ROS1 protein ab125624

5 图像

描述

产品名称	重组人ROS1蛋白
生物活性	The specific activity of ab125624 was determined to be 640 nmol/min/mg.
纯度	> 75 % Densitometry. Affinity purified.
表达系统	Baculovirus infected Sf9 cells
Accession	<u>P08922</u>
蛋白长度	Protein fragment
无动物成分	No
性质	Recombinant
种属	Human
预测分子量	82 kDa including tags
氨基酸	1883 to 2347

技术指标

Our **Abpromise guarantee** covers the use of **ab125624** in the following tested applications.

The application notes include recommended starting dilutions; optimal dilutions/concentrations should be determined by the end user.

应用	Western blot Functional Studies SDS-PAGE
形式	Liquid
补充说明	<u>ab204862</u> (IRS1 peptide) can be utilized as a substrate for assessing kinase activity

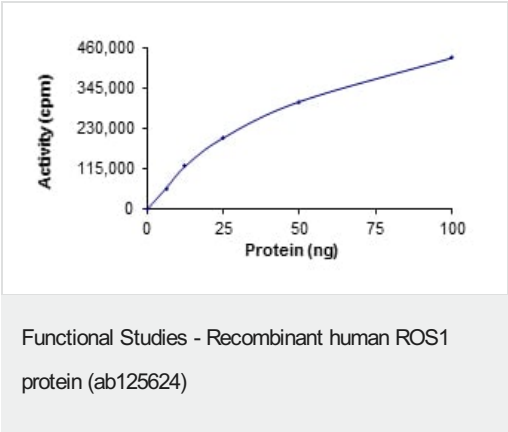
制备和贮存

稳定性和存储	Shipped on dry ice. Upon delivery aliquot and store at -80°C. Avoid freeze / thaw cycles. pH: 7.50 Constituents: 0.31% Glutathione, 0.002% PMSF, 0.003% DTT, 0.79% Tris HCl, 0.003% EDTA, 25% Glycerol (glycerin, glycerine), 0.88% Sodium chloride This product is an active protein and may elicit a biological response in vivo, handle with caution.
--------	---

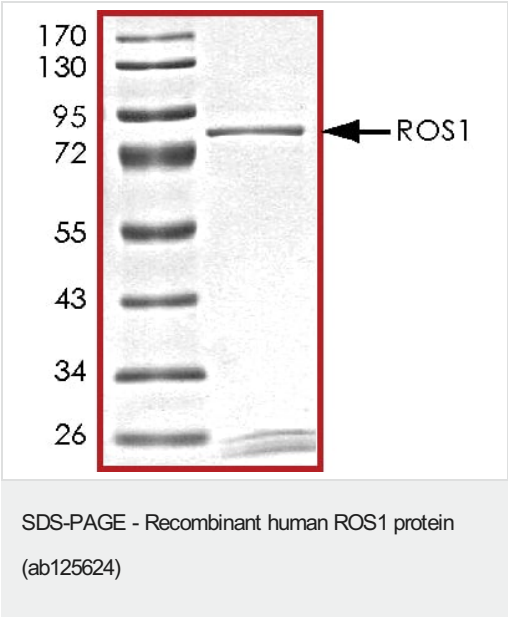
常规信息

功能	This is probably a cell growth or differentiation factor receptor with a tyrosine-protein kinase activity.
组织特异性	Expressed in brain. Expression is increased in primary gliomas.
疾病相关	Note=A chromosomal aberration involving ROS1 is found in a glioblastoma multiforme sample. An intra-chromosomal deletion del(6)(q21q21) is responsible for the formation of GOPC-ROS1 chimeric protein which has a constitutive receptor tyrosine kinase activity.
序列相似性	Belongs to the protein kinase superfamily. Tyr protein kinase family. Insulin receptor subfamily. Contains 9 fibronectin type-III domains. Contains 1 protein kinase domain.
细胞定位	Membrane.

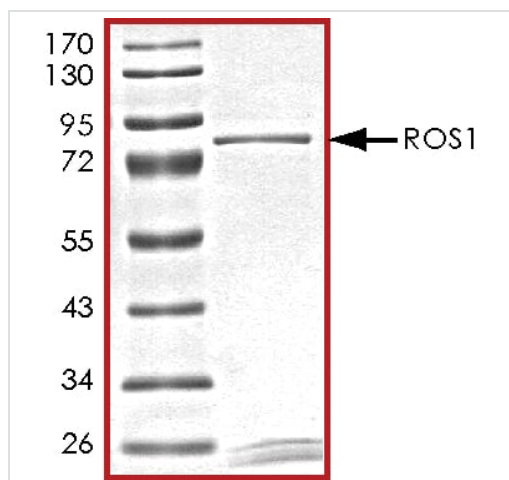
图片



The specific activity of ROS1 (ab125624) was determined to be 610 nmol/min/mg as per activity assay protocol

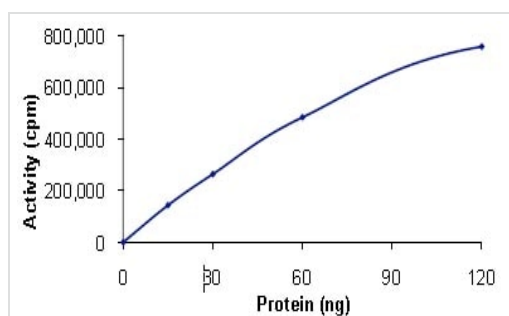


SDS PAGE analysis of ab125624



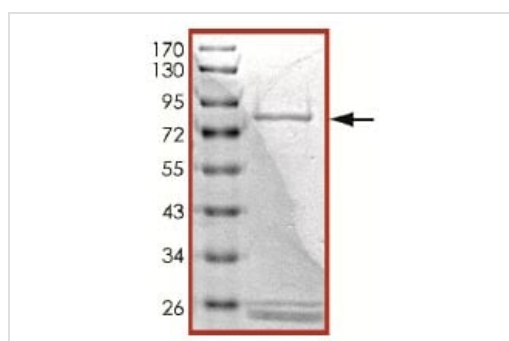
SDS PAGE analysis of ab125624

SDS-PAGE - Recombinant human ROS1 protein
(ab125624)



Sample Kinase Assay showing the specific activity of ab125624 as 640 nmol/min/mg.

Functional Studies - Recombinant human ROS1
protein (ab125624)



SDS-PAGE analysis of ab125624.

SDS-PAGE - Recombinant human ROS1 protein
(ab125624)

Please note: All products are "FOR RESEARCH USE ONLY. NOT FOR USE IN DIAGNOSTIC PROCEDURES"

Our Abpromise to you: Quality guaranteed and expert technical support

- Replacement or refund for products not performing as stated on the datasheet
- Valid for 12 months from date of delivery
- Response to your inquiry within 24 hours
- We provide support in Chinese, English, French, German, Japanese and Spanish
- Extensive multi-media technical resources to help you
- We investigate all quality concerns to ensure our products perform to the highest standards

If the product does not perform as described on this datasheet, we will offer a refund or replacement. For full details of the Abpromise, please visit <https://www.abcam.cn/abpromise> or contact our technical team.

Terms and conditions

- Guarantee only valid for products bought direct from Abcam or one of our authorized distributors