

# Recombinant human ROR2 protein ab70614

## 5 图像

### 描述

---

产品名称	重组人ROR2蛋白
纯度	> 80 % Densitometry. Purity is lot specific. Please contact our technical Support team for details. Affinity purified.
表达系统	Baculovirus infected Sf9 cells
蛋白长度	Protein fragment
无动物成分	No
性质	Recombinant
种属	Human
氨基酸	427 to 943

### 技术指标

---

Our **Abpromise guarantee** covers the use of **ab70614** in the following tested applications.

The application notes include recommended starting dilutions; optimal dilutions/concentrations should be determined by the end user.

应用	Functional Studies SDS-PAGE
形式	Liquid
补充说明	<b>ab64311</b> (Myelin Basic Protein protein) can be utilized as a substrate for assessing kinase activity

### 制备和贮存

---

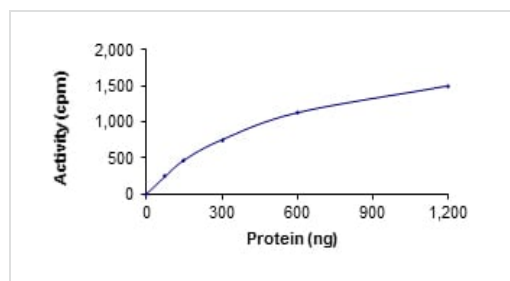
稳定性和存储	Shipped on dry ice. Upon delivery aliquot and store at -80°C. Avoid freeze / thaw cycles. pH: 7.50 Constituents: 0.0038% EGTA, 0.00174% PMSF, 0.00385% DTT, 0.79% Tris HCl, 0.00292% EDTA, 25% Glycerol (glycerin, glycerine), 0.87% Sodium chloride This product is an active protein and may elicit a biological response in vivo, handle with caution.
--------	--

### 常规信息

---

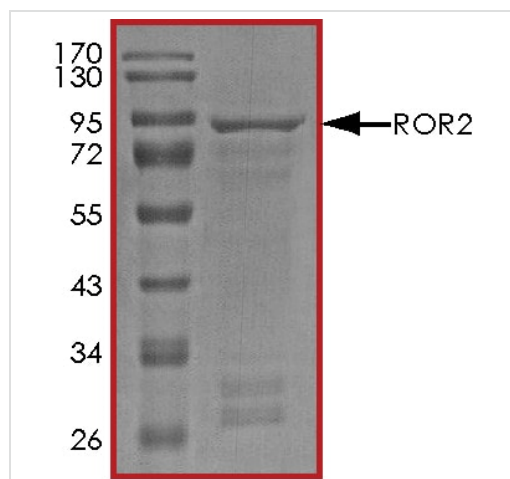
<b>功能</b>	Tyrosine-protein kinase receptor which may be involved in the early formation of the chondrocytes. It seems to be required for cartilage and growth plate development. Phosphorylates YWHAB, leading to induction of osteogenesis and bone formation.
<b>疾病相关</b>	Brachydactyly B1 Robinow syndrome autosomal recessive
<b>序列相似性</b>	Belongs to the protein kinase superfamily. Tyr protein kinase family. ROR subfamily. Contains 1 FZ (frizzled) domain. Contains 1 Ig-like C2-type (immunoglobulin-like) domain. Contains 1 kringle domain. Contains 1 protein kinase domain.
<b>发展阶段</b>	Expressed at high levels during early embryonic development. The expression levels drop strongly around day 16 and there are only very low levels in adult tissues.
<b>细胞定位</b>	Cell membrane.

## 图片



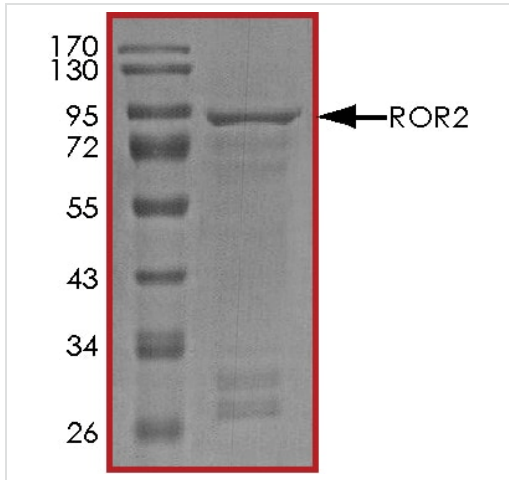
The specific activity of ROR2 (ab70614) was determined to be 0.2 nmol/min/mg as per activity assay protocol

Functional Studies - Recombinant human ROR2 protein (ab70614)



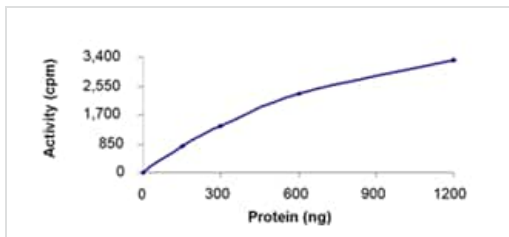
SDS PAGE analysis of ab70614

SDS-PAGE - Recombinant human ROR2 protein (ab70614)



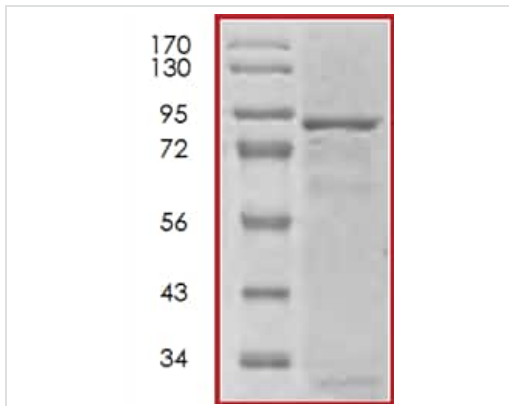
SDS PAGE analysis of ab70614

SDS-PAGE - Recombinant human ROR2 protein (ab70614)



Kinase assay

Functional Studies - Recombinant human ROR2 protein (ab70614)



SDS-PAGE showing ab70614 at approximately 86kDa.

SDS-PAGE - Recombinant human ROR2 protein (ab70614)

**Please note:** All products are "FOR RESEARCH USE ONLY. NOT FOR USE IN DIAGNOSTIC PROCEDURES"

## **Our Abpromise to you: Quality guaranteed and expert technical support**

---

- Replacement or refund for products not performing as stated on the datasheet
- Valid for 12 months from date of delivery
- Response to your inquiry within 24 hours
  
- We provide support in Chinese, English, French, German, Japanese and Spanish
- Extensive multi-media technical resources to help you
- We investigate all quality concerns to ensure our products perform to the highest standards

If the product does not perform as described on this datasheet, we will offer a refund or replacement. For full details of the Abpromise, please visit <https://www.abcam.cn/abpromise> or contact our technical team.

## **Terms and conditions**

---

- Guarantee only valid for products bought direct from Abcam or one of our authorized distributors