

Recombinant human ROR1 protein ab140807

2 图像

描述	
产品名称	重组人ROR1蛋白
生物活性	The specific activity of ROR1 was determined to be 0.2 nmol/min/mg.
纯度	> 95 % Densitometry. Affinity purified.
表达系统	Baculovirus infected Sf9 cells
Accession	<u>Q01973</u>
蛋白长度	Protein fragment
无动物成分	No
性质	Recombinant
种属	Human
序列	RNNQKSSSAPVQRQPKHVRGQNVEMSMLNAYKPKSKAKELPL SAVRFMEE LGECAFGKIYKGHLYLPGMDHAQLVAIKTLKDYNNPQQWTEF QQEASLMA ELHHPNIVCLLGAVTQEQPVCMLFEYINQGDLEFLIMRSPH SDVGCSSD EDGTVKSSLDHGDFLHIAIQIAAGMEYLSSHFFVHKDLAARN ILIGEQLH VKISDLGLSREIYSADYYRVQSKSLLPIRWMPPEAIMYGKFS SDSDIWSF GVVLWEIFSFGQLQPYYGFSNQEVIEMVRKRQLLPCSEDCPPR MYSLMTEC WNEIPSRPRFRKDIHVRLRSWEGLSSHTSSTTPSGGNATTQT TSLSASPV SNLSNPRYPNYMFPSQGITPQGQIAGFIGPPIPQNQRFIPIN GYPIPPGY AAFPAAHYQPTGPPRVIQHCPPPKSRSPSSASGSTSTGHVTS LPSSGSNQ EANIPLLPHMSIPNHPGGMGITVFGNKSQKPYKIDSKQASLL GDANIHGH TESMISAEL
预测分子量	82 kDa including tags
氨基酸	429 to 937
标签	GST tag N-Terminus

技术指标

Our **Abpromise guarantee** covers the use of **ab140807** in the following tested applications.

The application notes include recommended starting dilutions; optimal dilutions/concentrations should be determined by the end user.

应用	Functional Studies
	SDS-PAGE
	Western blot
形式	Liquid
补充说明	ab64311 (Myelin Basic Protein protein) can be utilized as a substrate for assessing kinase activity

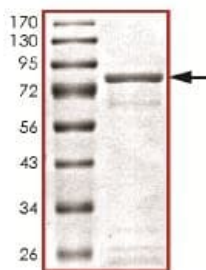
制备和贮存

稳定性和存储	Shipped on dry ice. Upon delivery aliquot and store at -80°C. Avoid freeze / thaw cycles.
	pH: 7
	Constituents: 0.31% Glutathione, 0.002% PMSF, 0.004% DTT, 0.79% Tris HCl, 0.003% EDTA, 0.88% Sodium chloride
	This product is an active protein and may elicit a biological response in vivo, handle with caution.

常规信息

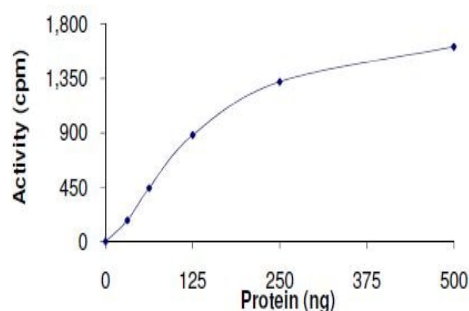
功能	Tyrosine-protein kinase receptor whose role is not yet clear.
组织特异性	Expressed strongly in human heart, lung and kidney, but weakly in the CNS. Isoform Short is strongly expressed in fetal and adult CNS and in a variety of human cancers, including those originating from CNS or PNS neuroectoderm.
序列相似性	Belongs to the protein kinase superfamily. Tyr protein kinase family. ROR subfamily.
	Contains 1 FZ (frizzled) domain.
	Contains 1 Ig-like C2-type (immunoglobulin-like) domain.
	Contains 1 kringle domain.
发展阶段	Contains 1 protein kinase domain.
	Expressed at high levels during early embryonic development. The expression levels drop strongly around day 16 and there are only very low levels in adult tissues.
细胞定位	Membrane.

图片



SDS PAGE analysis of ab140807 at ~82 kDa.

SDS-PAGE - Recombinant human ROR1 protein
(ab140807)



The specific activity of ROR1 (ab140807) was determined to be 0.2 nmol /min/mg.

Functional Studies - Recombinant human ROR1
protein (ab140807)

Please note: All products are "FOR RESEARCH USE ONLY. NOT FOR USE IN DIAGNOSTIC PROCEDURES"

Our Abpromise to you: Quality guaranteed and expert technical support

- Replacement or refund for products not performing as stated on the datasheet
- Valid for 12 months from date of delivery
- Response to your inquiry within 24 hours
- We provide support in Chinese, English, French, German, Japanese and Spanish
- Extensive multi-media technical resources to help you
- We investigate all quality concerns to ensure our products perform to the highest standards

If the product does not perform as described on this datasheet, we will offer a refund or replacement. For full details of the Abpromise, please visit <https://www.abcam.cn/abpromise> or contact our technical team.

Terms and conditions

- Guarantee only valid for products bought direct from Abcam or one of our authorized distributors