

Recombinant Human RNA polymerase II CTD repeat YSPTSPS protein ab81834

★★★★★ [1 Abreviews](#) [1 图像](#)

描述

产品名称	重组人RNA polymerase II CTD repeat YSPTSPS蛋白		
纯度	> 95 % SDS-PAGE.		
表达系统	Escherichia coli		
Accession	<u>P24928</u>		
蛋白长度	Protein fragment		
无动物成分	No		
性质	Recombinant		
种属	Human		
序列	MSPILGYWKIKGLVQPTRLLEYLEEKYEEHLYERDEGDKWR NKKFELGL EFPNLPYYIDGDVKLTQSMAIIRYIADKHNMLGGCPKERAET SMLEGAVL DIRYGVSR IAYSKDFETLKVDFLSKLPEMLKMFEDRLCHKTY LNGDHVTH PDFMLYDALDVVLYMDPMCLDAFPKLVCFKKRIEAI PQIDKY LKSSKYIA WPLQG WQATFGGGDHPPKSDLVPRGSPMGHMGSSPSLRSGSV GGAMSPSY SPTSPAYEPRSPGGYTPQSPSYSPTSPSYSPTSPSYSPTSPN YSPTSPSY SPTSPSYSPTSPSYSPTSPSYSPTSPSYSPTSPSYSPTSPSY SPTSPSYS PTSPSYSPTSPSYSPTSPSYSPTSPSYSPTSPSYSPTSPSYS PTSPSYSP TSPNYSPTSPNYTPTSPSYSPTSPSYSPTSPNYTPTSPNYS TSPSYSP SPSYSPTSPSYSPSSPRYT PQSPTYTPSSPSYSPSSPSYSPT SPKYTPTS PSYSPSSPEYTPTSPKYSPTSPKYSPTSPKYSPTSPTYSPTT PKYSPTSP TYSPTSPVYTPTSPKYSPTSPTYSPTSPKYSPTSPTYSPTSP KGSTYSPT SPGYSPTSPTYSLTSPAISPDDSD EEN		

预测分子量	68 kDa including tags
氨基酸	1586 to 1970
标签	GST tag N-Terminus
额外的序列信息	Recombinant protein isolated from an E. coli strain that carries the coding sequence of human RNA pol II c-terminal domain under control of a T7 promoter. Heptapeptide seq Tyr-Ser-Pro-Thr-Ser-Pro-Ser.

技术指标

Our Abpromise guarantee covers the use of ab81834 in the following tested applications.	
The application notes include recommended starting dilutions; optimal dilutions/concentrations should be determined by the end user.	
应用	SDS-PAGE
形式	Liquid

制备和贮存

稳定性和存储	Shipped on dry ice. Upon delivery aliquot and store at -80°C. Avoid freeze / thaw cycles. pH: 7.9 Constituents: 0.75% Potassium chloride, 0.0154% DTT, 0.316% Tris HCl, 0.00584% EDTA, 20% Glycerol (glycerin, glycerine)
--------	---

常规信息

功能	DNA-dependent RNA polymerase catalyzes the transcription of DNA into RNA using the four ribonucleoside triphosphates as substrates. Largest and catalytic component of RNA polymerase II which synthesizes mRNA precursors and many functional non-coding RNAs. Forms the polymerase active center together with the second largest subunit. Pol II is the central component of the basal RNA polymerase II transcription machinery. It is composed of mobile elements that move relative to each other. RPB1 is part of the core element with the central large cleft, the clamp element that moves to open and close the cleft and the jaws that are thought to grab the incoming DNA template. At the start of transcription, a single-stranded DNA template strand of the promoter is positioned within the central active site cleft of Pol II. A bridging helix emanates from RPB1 and crosses the cleft near the catalytic site and is thought to promote translocation of Pol II by acting as a ratchet that moves the RNA-DNA hybrid through the active site by switching from straight to bent conformations at each step of nucleotide addition. During transcription elongation, Pol II moves on the template as the transcript elongates. Elongation is influenced by the phosphorylation status of the C-terminal domain (CTD) of Pol II largest subunit (RPB1), which serves as a platform for assembly of factors that regulate transcription initiation, elongation, termination and mRNA processing. Acts as an RNA-dependent RNA polymerase when associated with small delta antigen of Hepatitis delta virus, acting both as a replicate and transcriptase for the viral RNA circular genome.
序列相似性	Belongs to the RNA polymerase beta' chain family.
结构域	The C-terminal domain (CTD) serves as a platform for assembly of factors that regulate transcription initiation, elongation, termination and mRNA processing.
翻译后修饰	The tandem heptapeptide repeats in the C-terminal domain (CTD) can be highly phosphorylated. The phosphorylation activates Pol II. Phosphorylation occurs mainly at residues 'Ser-2' and 'Ser-5'

of the heptapeptide repeat and is mediated, at least, by CDK7 and CDK9. CDK7 phosphorylation of POLR2A associated with DNA promotes transcription initiation by triggering dissociation from DNA. Phosphorylation also takes place at 'Ser-7' of the heptapeptide repeat, which is required for efficient transcription of snRNA genes and processing of the transcripts. The phosphorylation state is believed to result from the balanced action of site-specific CTD kinases and phosphatases, and a 'CTD code' that specifies the position of Pol II within the transcription cycle has been proposed. Dephosphorylated by the protein phosphatase CTDSP1. Among tandem heptapeptide repeats of the C-terminal domain (CTD) some do not match the Y-S-P-T-S-P-S consensus, the seventh serine residue 'Ser-7' being replaced by a lysine. 'Lys-7' in these non-consensus heptapeptide repeats can be alternatively acetylated, methylated and dimethylated. EP300 is one of the enzyme able to acetylate 'Lys-7'. Acetylation at 'Lys-7' of non-consensus heptapeptide repeats is associated with 'Ser-2' phosphorylation and active transcription. It may regulate initiation or early elongation steps of transcription specially for inducible genes.

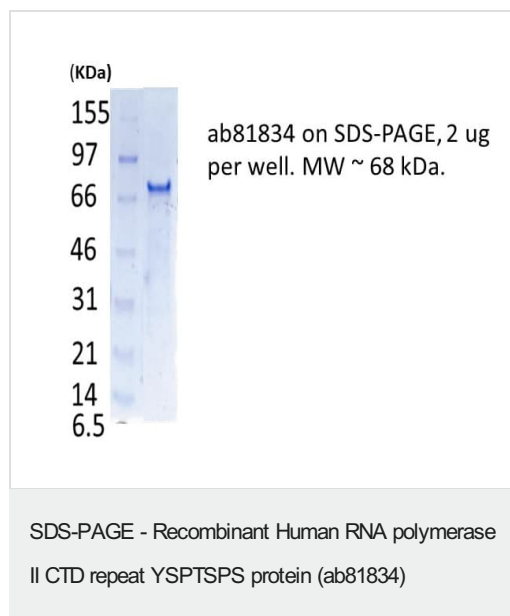
Methylated at Arg-1810 prior to transcription initiation when the CTD is hypophosphorylated, phosphorylation at Ser-1805 and Ser-1808 preventing this methylation. Symmetrically or asymmetrically dimethylated at Arg-1810 by PRMT5 and CARM1 respectively. Symmetric or asymmetric dimethylation modulates interactions with CTD-binding proteins like SMN1/SMN2 and TDRD3. SMN1/SMN2 interacts preferentially with the symmetrically dimethylated form while TDRD3 interacts with the asymmetric form. Through the recruitment of SMN1/SMN2, symmetric dimethylation is required for resolving RNA-DNA hybrids created by RNA polymerase II, that form R-loop in transcription terminal regions, an important step in proper transcription termination. CTD dimethylation may also facilitate the expression of select RNAs. Among tandem heptapeptide repeats of the C-terminal domain (CTD) some do not match the Y-S-P-T-S-P-S consensus, the seventh serine residue 'Ser-7' being replaced by a lysine. 'Lys-7' in these non-consensus heptapeptide repeats can be alternatively acetylated, methylated and dimethylated. Methylation occurs in the earliest transcription stages and precedes or is concomitant to 'Ser-5' and 'Ser-7' phosphorylation.

Ubiquitinated by WWP2 leading to proteasomal degradation (By similarity). Following UV treatment, the elongating form of RNA polymerase II (RNA pol Ilo) is ubiquitinated UV damage sites without leading to degradation: ubiquitination is facilitated by KIAA1530/UVSSA and promotes RNA pol Ilo backtracking to allow access to the nucleotide excision repair machinery.

细胞定位

Nucleus.

图片



Please note: All products are "FOR RESEARCH USE ONLY. NOT FOR USE IN DIAGNOSTIC PROCEDURES"

Our Abpromise to you: Quality guaranteed and expert technical support

- Replacement or refund for products not performing as stated on the datasheet
- Valid for 12 months from date of delivery
- Response to your inquiry within 24 hours
- We provide support in Chinese, English, French, German, Japanese and Spanish
- Extensive multi-media technical resources to help you
- We investigate all quality concerns to ensure our products perform to the highest standards

If the product does not perform as described on this datasheet, we will offer a refund or replacement. For full details of the Abpromise, please visit <https://www.abcam.cn/abpromise> or contact our technical team.

Terms and conditions

- Guarantee only valid for products bought direct from Abcam or one of our authorized distributors