

Recombinant human Ret protein ab84791

5 图像

描述

产品名称	重组人Ret蛋白
生物活性	The Specific activity of ab84791 was determined to be 67 nmol/min/mg.
纯度	> 80 % Densitometry. Affinity purified.
表达系统	Baculovirus infected Sf9 cells
蛋白长度	Protein fragment
无动物成分	No
性质	Recombinant
种属	Human
氨基酸	658 to 1114

技术指标

Our **Abpromise guarantee** covers the use of **ab84791** in the following tested applications.

The application notes include recommended starting dilutions; optimal dilutions/concentrations should be determined by the end user.

应用	SDS-PAGE Western blot Functional Studies
形式	Liquid
补充说明	ab204862 (IRS1 peptide) can be utilized as a substrate for assessing kinase activity

制备和贮存

稳定性和存储	Shipped on dry ice. Upon delivery aliquot and store at -80°C. Avoid freeze / thaw cycles. pH: 7.50 Constituents: 0.0038% EGTA, 0.00174% PMSF, 0.00385% DTT, 0.79% Tris HCl, 0.00292% EDTA, 25% Glycerol (glycerin, glycerine), 0.87% Sodium chloride This product is an active protein and may elicit a biological response in vivo, handle with caution.
--------	--

功能

Probable receptor with tyrosine-protein kinase activity; important for development.

疾病相关

Defects in RET may be a cause of colorectal cancer (CRC) [MIM:114500].

Defects in RET are a cause of Hirschsprung disease (HSCR) [MIM:142623]. HSCR is a genetic disorder of neural crest development characterized by the absence of intramural ganglion cells in the hindgut, often resulting in intestinal obstruction. Occasionally, MEN2A or FMTC occur in association with HSCR.

Defects in RET are the cause of medullary thyroid carcinoma (MTC) [MIM:155240]. MTC is a rare tumor derived from the C cells of the thyroid. Three hereditary forms are known, that are transmitted in an autosomal dominant fashion: (a) multiple neoplasia type 2A (MEN2A), (b) multiple neoplasia type IIB (MEN2B) and (c) familial MTC (FMTC), which occurs in 25-30% of MTC cases and where MTC is the only clinical manifestation.

Defects in RET are the cause of multiple neoplasia type 2B (MEN2B) [MIM:162300]. MEN2B is an uncommon inherited cancer syndrome characterized by predisposition to MTC and pheochromocytoma which is associated with marfanoid habitus, mucosal neuromas, skeletal and ophtalmic abnormalities, and ganglioneuromas of the intestine tract. Then the disease progresses rapidly with the development of metastatic MTC and a pheochromocytome in 50% of cases.

Defects in RET are a cause of susceptibility to pheochromocytoma (PCC) [MIM:171300]. A catecholamine-producing tumor of chromaffin tissue of the adrenal medulla or sympathetic paraganglia. The cardinal symptom, reflecting the increased secretion of epinephrine and norepinephrine, is hypertension, which may be persistent or intermittent.

Defects in RET are the cause of multiple neoplasia type 2A (MEN2A) [MIM:171400]; also known as multiple neoplasia type 2 (MEN2). MEN2A is the most frequent form of medullary thyroid cancer (MTC). It is an inherited cancer syndrome characterized by MTC, pheochromocytoma and/or hyperparathyroidism.

Defects in RET are a cause of thyroid papillary carcinoma (TPC) [MIM:188550]. TPC is a common tumor of the thyroid that typically arises as an irregular, solid or cystic mass from otherwise normal thyroid tissue. Papillary carcinomas are malignant neoplasm characterized by the formation of numerous, irregular, finger-like projections of fibrous stroma that is covered with a surface layer of neoplastic epithelial cells. Note=Chromosomal aberrations involving RET are found in thyroid papillary carcinomas. Inversion inv(10)(q11.2;q21) generates the RET/CCDC6 (PTC1) oncogene; inversion inv(10)(q11.2;q11.2) generates the RET/NCOA4 (PTC3) oncogene; translocation t(10;14)(q11;q32) with GOLGA5 generates the RET/GOLGA5 (PTC5) oncogene; translocation t(8;10)(p21.3;q11.2) with PCM1 generates the PCM1/RET fusion; translocation t(6;10)(p21.3;q11.2) with RFP generates the Delta RFP/RET oncogene; translocation t(1;10)(p13;q11) with TRIM33 generates the TRIM33/RET (PTC7) oncogene; translocation t(7;10)(q32;q11) with TRIM24/TIF1 generates the TRIM24/RET (PTC6) oncogene. The PTC5 oncogene has been found in 2 cases of PACT in children exposed to radioactive fallout after Chernobyl. A chromosomal aberration involving TRIM27/RFP is found in thyroid papillary carcinomas. Translocation t(6;10)(p21.3;q11.2) with RET. The translocation generates TRIM27/RET and delta TRIM27/RET oncogenes.

Defects in RET are a cause of renal adysplasia (RADYS) [MIM:191830]; also known as renal agenesis or renal aplasia. Renal agenesis refers to the absence of one (unilateral) or both (bilateral) kidneys at birth. Bilateral renal agenesis belongs to a group of perinatally lethal renal diseases, including severe bilateral renal dysplasia, unilateral renal agenesis with contralateral dysplasia and severe obstructive uropathy.

Defects in RET are a cause of congenital central hypoventilation syndrome (CCHS) [MIM:209880]; also known as congenital failure of autonomic control or Ondine curse. CCHS is a rare disorder characterized by abnormal control of respiration in the absence of neuromuscular or lung disease, or an identifiable brain stem lesion. A deficiency in autonomic control of respiration

results in inadequate or negligible ventilatory and arousal responses to hypercapnia and hypoxemia.

序列相似性

Belongs to the protein kinase superfamily. Tyr protein kinase family.

Contains 1 cadherin domain.

Contains 1 protein kinase domain.

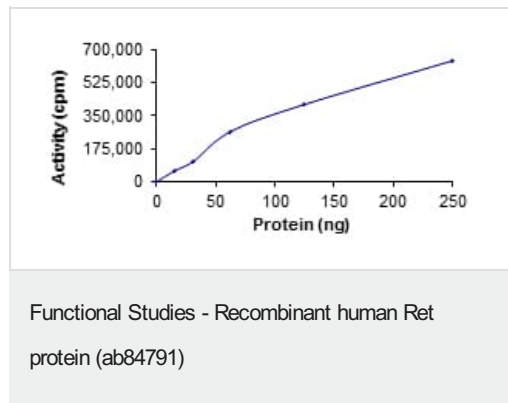
翻译后修饰

Autophosphorylated on C-terminal tyrosine residues upon ligand stimulation. Dephosphorylated by PTPRJ on Tyr-905, Tyr-1015 and Tyr-1062.

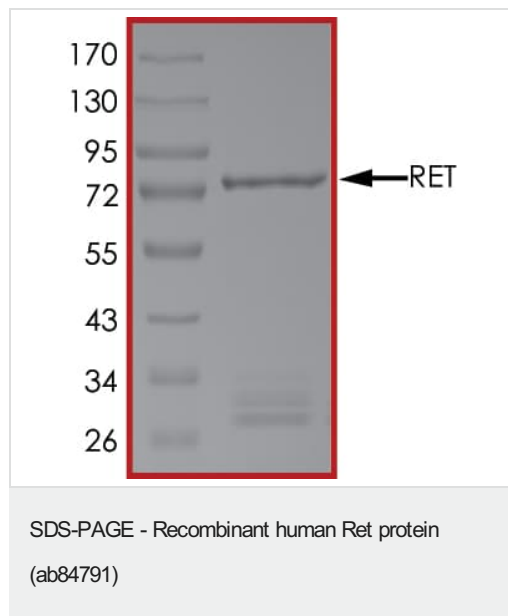
细胞定位

Membrane.

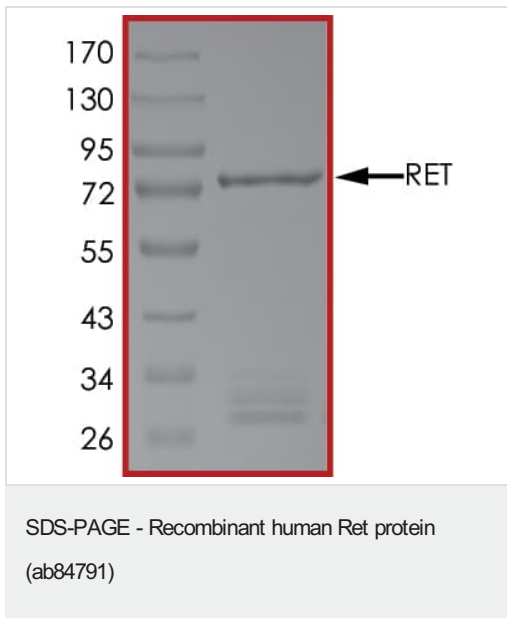
图片



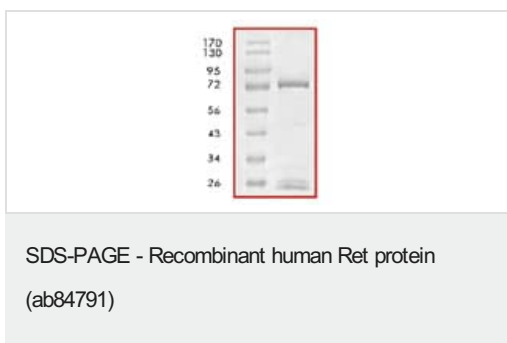
The specific activity of Ret (ab84791) was determined to be 78 nmol/min/mg as per activity assay protocol



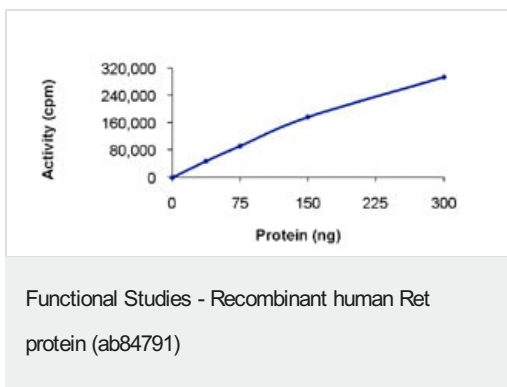
SDS PAGE analysis of ab84791



SDS PAGE analysis of ab84791



SDS-PAGE showing ab84791 at approximately 74kDa.



The Specific activity of ab84791 was determined to be 67 nmol/min/mg.

Please note: All products are "FOR RESEARCH USE ONLY. NOT FOR USE IN DIAGNOSTIC PROCEDURES"

Our Abpromise to you: Quality guaranteed and expert technical support

- Replacement or refund for products not performing as stated on the datasheet
- Valid for 12 months from date of delivery
- Response to your inquiry within 24 hours
- We provide support in Chinese, English, French, German, Japanese and Spanish
- Extensive multi-media technical resources to help you
- We investigate all quality concerns to ensure our products perform to the highest standards

If the product does not perform as described on this datasheet, we will offer a refund or replacement. For full details of the Abpromise, please visit <https://www.abcam.cn/abpromise> or contact our technical team.

Terms and conditions

- Guarantee only valid for products bought direct from Abcam or one of our authorized distributors