

Recombinant Human Renalase protein (denatured) ab134535

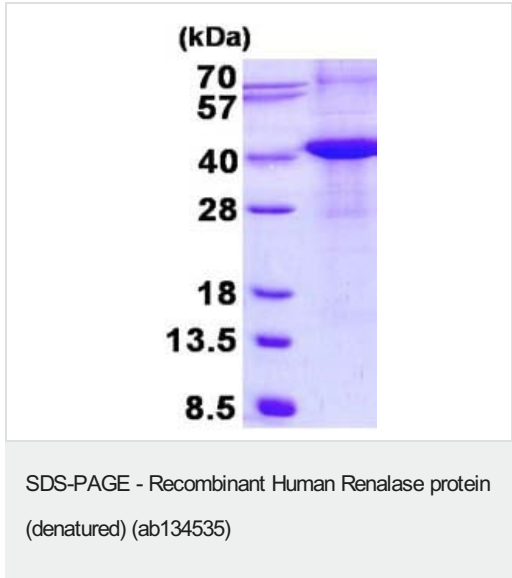
1 图像

描述	
产品名称	重组人Renalase蛋白(denatured)
纯度	> 90 % SDS-PAGE.
表达系统	Escherichia coli
Accession	<u>Q5VYX0</u>
蛋白长度	Full length protein
无动物成分	No
性质	Recombinant
种属	Human
序列	MGSSHHHHHSSGLVPRGSHMGSMALLRRQTSGPLYLAVWDK AEDSGGRM TTACSPHNPQCTADLGAQYITCTPHYAKKHQRFYDELLAYGV LRPLSSPI EGMVMKEGDCNFVAPQGISSIIKHYLESGAEVYFRHRVTQI NLRDDKWE VSKQTGSPEQFDLIVLTMVPVEILQLQGDITTLISECQRQQL EAVSYSSR YALGLFYEAGTKIDVPWAGQYITSNPCIRFVSIDNKKRNIES SEIGPSLV IHTTVPGVITYLEHSIEDVQELVFQQLLENILPGLPQPIATKC QKWRHSQV TNAAANCPGQMTLHHKPFLACGGDGFTQSNFDGCITSALCVL EALKNYI
预测分子量	39 kDa including tags
氨基酸	18 to 342
标签	His tag N-Terminus

技术指标	
Our <b>Abpromise guarantee</b> covers the use of <b>ab134535</b> in the following tested applications.	
The application notes include recommended starting dilutions; optimal dilutions/concentrations should be determined by the end user.	
应用	SDS-PAGE

形式	Liquid
制备和贮存	
稳定性和存储	<p>Shipped at 4°C. Store at +4°C short term (1-2 weeks). Upon delivery aliquot. Store at -20°C or -80°C. Avoid freeze / thaw cycle.</p> <p>pH: 8.00</p> <p>Constituents: 12.01% Urea, 0.32% Tris HCl, 10% Glycerol (glycerin, glycerine)</p>
常规信息	
功能	<p>Probable FAD-dependent amine oxidase secreted by the kidney, which circulates in blood and modulates cardiac function and systemic blood pressure. Degrades catecholamines such as dopamine, norepinephrine and epinephrine in vitro. Lowers blood pressure in vivo by decreasing cardiac contractility and heart rate and preventing a compensatory increase in peripheral vascular tone, suggesting a causal link to the increased plasma catecholamine and heightened cardiovascular risk. High concentrations of catecholamines activate plasma renalase and promotes its secretion and synthesis (By similarity). According to PubMed:17385068, is unlikely that renalase has physiologically relevant catecholamine-oxidizing activity.</p>
组织特异性	<p>Secreted into the blood by the kidney. Highly expressed in the kidney, expressed at lower level in heart, skeletal muscle and small intestine. Its plasma concentration is markedly reduced in patients with end-stage renal disease, as compared with healthy subjects.</p>
序列相似性	<p>Belongs to the renalase family.</p>
细胞定位	<p>Secreted.</p>

图片



15% SDS-PAGE analysis of 3 µg ab134535.

**Please note:** All products are "FOR RESEARCH USE ONLY. NOT FOR USE IN DIAGNOSTIC PROCEDURES"

### **Our Abpromise to you: Quality guaranteed and expert technical support**

---

- Replacement or refund for products not performing as stated on the datasheet
- Valid for 12 months from date of delivery
- Response to your inquiry within 24 hours
  
- We provide support in Chinese, English, French, German, Japanese and Spanish
- Extensive multi-media technical resources to help you
- We investigate all quality concerns to ensure our products perform to the highest standards

If the product does not perform as described on this datasheet, we will offer a refund or replacement. For full details of the Abpromise, please visit <https://www.abcam.cn/abpromise> or contact our technical team.

### **Terms and conditions**

---

- Guarantee only valid for products bought direct from Abcam or one of our authorized distributors