

Recombinant Human Raptor protein ab112419

[1 References](#) [1 图像](#)

描述

产品名称	重组人Raptor蛋白	
表达系统	Wheat germ	
Accession	<u>Q8N122-2</u>	
蛋白长度	Full length protein	
无动物成分	No	
性质	Recombinant	
种属	Human	
序列	<pre> MESEMLQSPLLGLGEEDEADLTDWNLPLAFMKKRHCEKIEGS KSLAQSWR MKDRMKTVSVALVLCNLVGVDPDPPDVVKTTPCARLECWIDPLS MGPQKALE TIGANLQKQYENWQPRARYKQSLDPTVDEVKKLCTSLRRNAK EERVLPHY NGHGVRPRTVNGEVWVFNKNYTYIPLSIYDLQTMGSPSIF VYDCSNAG LIVKSFQFALQREQELEVAAINPNHPLAQMPLPPSMKNCIQ LAACEATE LLPMIPDLPADLFTSCLTTPKIALRWFCMQKCVSLVPGVTL DLIEKIPG RLNDRRTPLGELNWIFTAITDTIAWNVLPDLPFQKLFQDRL VASLFRNF LLAERIMRSYNCTPVSSPRLPPTYMHAMW </pre>	
预测分子量	68 kDa including tags	
氨基酸	1 to 379	

技术指标

Our **Abpromise guarantee** covers the use of **ab112419** in the following tested applications.

The application notes include recommended starting dilutions; optimal dilutions/concentrations should be determined by the end user.

应用	SDS-PAGE
	ELISA
	Western blot
形式	Liquid

制备和贮存

稳定性和存储

Shipped on dry ice. Upon delivery aliquot and store at -80°C. Avoid freeze / thaw cycles.

pH: 8.00

Constituents: 0.31% Glutathione, 0.79% Tris HCl

常规信息

功能

Involved in the control of the mammalian target of rapamycin complex 1 (mTORC1) activity which regulates cell growth and survival, and autophagy in response to nutrient and hormonal signals; functions as a scaffold for recruiting mTORC1 substrates. mTORC1 is activated in response to growth factors or amino-acids. Growth factor-stimulated mTORC1 activation involves a AKT1-mediated phosphorylation of TSC1-TSC2, which leads to the activation of the RHEB GTPase that potentially activates the protein kinase activity of mTORC1. Amino-acid-signaling to mTORC1 requires its relocalization to the lysosomes mediated by the Ragulator complex and the Rag GTPases. Activated mTORC1 up-regulates protein synthesis by phosphorylating key regulators of mRNA translation and ribosome synthesis. mTORC1 phosphorylates EIF4EBP1 and releases it from inhibiting the elongation initiation factor 4E (eIF4E). mTORC1 phosphorylates and activates S6K1 at 'Thr-389', which then promotes protein synthesis by phosphorylating PDCD4 and targeting it for degradation.

组织特异性

Highly expressed in skeletal muscle, and in a lesser extent in brain, lung, small intestine, kidney and placenta.

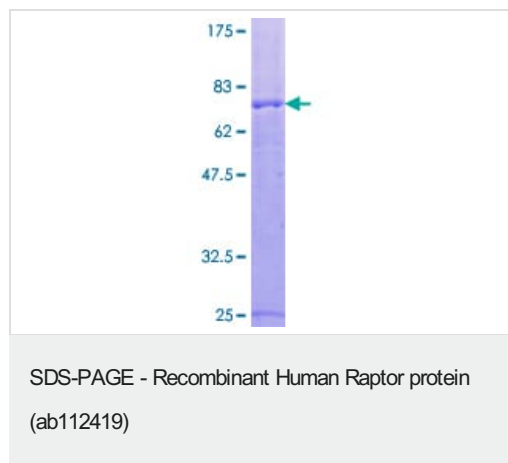
序列相似性

Belongs to the WD repeat RAPTOR family.
Contains 7 WD repeats.

细胞定位

Cytoplasm. Lysosome. Targeting to lysosomes depends on amino acid availability.

图片



ab112419 analysed on a 12.5% SDS-PAGE gel stained with Coomassie Blue.

Please note: All products are "FOR RESEARCH USE ONLY. NOT FOR USE IN DIAGNOSTIC PROCEDURES"

Our Abpromise to you: Quality guaranteed and expert technical support

- Replacement or refund for products not performing as stated on the datasheet

- Valid for 12 months from date of delivery
- Response to your inquiry within 24 hours

- We provide support in Chinese, English, French, German, Japanese and Spanish
- Extensive multi-media technical resources to help you
- We investigate all quality concerns to ensure our products perform to the highest standards

If the product does not perform as described on this datasheet, we will offer a refund or replacement. For full details of the Abpromise, please visit <https://www.abcam.cn/abpromise> or contact our technical team.

Terms and conditions

- Guarantee only valid for products bought direct from Abcam or one of our authorized distributors