

Recombinant Human RAC3 protein ab103470

1 图像

描述	
产品名称	重组人RAC3蛋白
纯度	> 95 % SDS-PAGE. ab103470 was purified using conventional chromatography techniques.
表达系统	Escherichia coli
Accession	<b><u>P60763</u></b>
蛋白长度	Full length protein
无动物成分	No
性质	Recombinant
种属	Human
序列	MQAIKCVVVGDAVGKTCLLISYTTNAFPGEYIPTVFDNYSANVMVDGKPVNLGLWDTAGQEDYDRLRPLSYPQTDVFLICFSLVSPASFENVRAKWYPEVRHHCPTPIILLVGTKLDLRDDKDTIERLRDKKLAPITYPQGLAMAREIGSVKYLECSALTQRGLKTVFDEAIRAVLCPPPVKKPGKKC
预测分子量	21 kDa
氨基酸	1 to 189

技术指标	
Our <b><u>Abpromise guarantee</u></b> covers the use of <b>ab103470</b> in the following tested applications.	
The application notes include recommended starting dilutions; optimal dilutions/concentrations should be determined by the end user.	
应用	SDS-PAGE Mass Spectrometry
质谱法	MALDI-TOF
形式	Liquid

制备和贮存	
稳定性和存储	Shipped at 4°C. Store at +4°C short term (1-2 weeks). Upon delivery aliquot. Store at -20°C or -

80°C. Avoid freeze / thaw cycle.

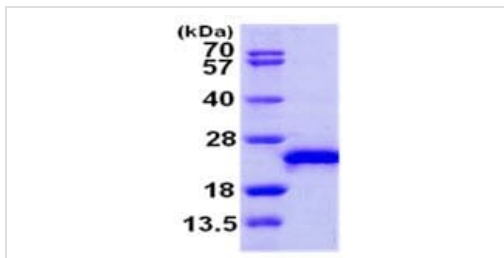
pH: 8.00

Constituents: 0.00174% PMSF, 0.0308% DTT, 0.316% Tris HCl, 0.0292% EDTA, 10% Glycerol (glycerin, glycerine), 1.16% Sodium chloride

## 常规信息

功能	Plasma membrane-associated small GTPase which cycles between an active GTP-bound and inactive GDP-bound state. In active state binds to a variety of effector proteins to regulate cellular responses, such as cell spreading and the formation of actin-based protusions including lamellipodia and membrane ruffles. Promotes cell adhesion and spreading on fibrinogen in a CIB1 and alpha-IIb/beta3 integrin-mediated manner.
组织特异性	Highest levels in brain, also detected in heart, placenta and pancreas.
序列相似性	Belongs to the small GTPase superfamily. Rho family.
翻译后修饰	(Microbial infection) Glycosylated at Tyr-32 by Photothabdus asymbiotica toxin PAU_02230. Mono-O-GlcNAcylation by PAU_02230 inhibits downstream signaling by an impaired interaction with diverse regulator and effector proteins of Rac and leads to actin disassembly.
细胞定位	Cytoplasm. Endomembrane system. Cell projection, lamellipodium. Cytoplasm, perinuclear region. Cell membrane. Cytoplasm, cytoskeleton. Membrane-associated when activated. Colocalizes with NRBP to endomembranes and at the cell periphery in lamellipodia. Colocalized with CIB1 in the perinuclear area and at the cell periphery.

## 图片



15% SDS-PAGE analysis of 3µg ab103470.

SDS-PAGE - Recombinant Human RAC3 protein  
(ab103470)

**Please note:** All products are "FOR RESEARCH USE ONLY. NOT FOR USE IN DIAGNOSTIC PROCEDURES"

## Our Abpromise to you: Quality guaranteed and expert technical support

- Replacement or refund for products not performing as stated on the datasheet
- Valid for 12 months from date of delivery
- Response to your inquiry within 24 hours
- We provide support in Chinese, English, French, German, Japanese and Spanish
- Extensive multi-media technical resources to help you

- We investigate all quality concerns to ensure our products perform to the highest standards

If the product does not perform as described on this datasheet, we will offer a refund or replacement. For full details of the Abpromise, please visit <https://www.abcam.cn/abpromise> or contact our technical team.

### **Terms and conditions**

---

- Guarantee only valid for products bought direct from Abcam or one of our authorized distributors