

Recombinant Human RAB6B protein ab104035

1 图像

描述	
产品名称	重组人RAB6B蛋白
纯度	> 95 % SDS-PAGE. Purified by using anion-exchange chromatography (DEAE sepharose resin) and gel-filtration chromatography (Sephacryl S-200) with 20mM Tris pH 7.5, 2mM EDTA.
表达系统	Escherichia coli
Accession	<u>Q9NRW1</u>
蛋白长度	Full length protein
无动物成分	No
性质	Recombinant
种属	Human
序列	MGSSHHHHHH SSGLVPRGSH MSAGGDFGNP LRKFKLVFLG EQSVGKTSLI TRFMYDSFDN TYQATIGIDF LSKTMYLEDR TVRLQLWDTA GQERFRSLIP SYIRDSTVAV VVYDITNLNS FQQTSKWIDD VRTERGSDVI IMLVGNKTDL ADKRQITIEE GEQRAKELSV MFIETSAKTG YNVKQLFRRV ASALPGMENV QEKSKEGMID IKLDKPQEPP ASEGGCSC
预测分子量	26 kDa including tags
氨基酸	1 to 208
标签	His tag N-Terminus

技术指标	
Our <b>Abpromise guarantee</b> covers the use of <b>ab104035</b> in the following tested applications.	
The application notes include recommended starting dilutions; optimal dilutions/concentrations should be determined by the end user.	
应用	SDS-PAGE Mass Spectrometry
质谱法	MALDI-TOF
形式	Liquid

## 制备和贮存

### 稳定性和存储

Shipped at 4°C. Store at +4°C short term (1-2 weeks). Upon delivery aliquot. Store at -20°C or -80°C. Avoid freeze / thaw cycle.

pH: 8.00

Constituents: 0.0154% DTT, 0.316% Tris HCl, 20% Glycerol (glycerin, glycerine), 0.58% Sodium chloride

## 常规信息

### 功能

Seems to have a role in retrograde membrane traffic at the level of the Golgi complex. May function in retrograde transport in neuronal cells.

### 组织特异性

Predominantly expressed in brain.

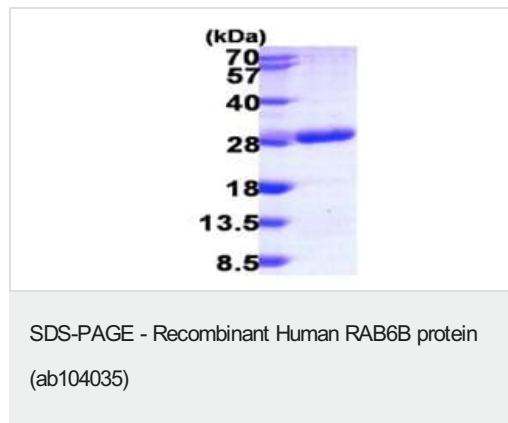
### 序列相似性

Belongs to the small GTPase superfamily. Rab family.

### 细胞定位

Golgi apparatus membrane. Cytoplasmic vesicle. Colocalizes with BICD1 at vesicular structures that align along microtubules.

## 图片



15% SDS-PAGE analysis of ab104035 (3 µg).

**Please note:** All products are "FOR RESEARCH USE ONLY. NOT FOR USE IN DIAGNOSTIC PROCEDURES"

## Our Abpromise to you: Quality guaranteed and expert technical support

- Replacement or refund for products not performing as stated on the datasheet
- Valid for 12 months from date of delivery
- Response to your inquiry within 24 hours
- We provide support in Chinese, English, French, German, Japanese and Spanish
- Extensive multi-media technical resources to help you
- We investigate all quality concerns to ensure our products perform to the highest standards

If the product does not perform as described on this datasheet, we will offer a refund or replacement. For full details of the Abpromise, please visit <https://www.abcam.cn/abpromise> or contact our technical team.

## Terms and conditions

---

- Guarantee only valid for products bought direct from Abcam or one of our authorized distributors