

# Recombinant Human Proteasome subunit beta type 2/PSMB2 protein ab116169

1 图像

描述	
产品名称	重组人Proteasome subunit beta type 2/PSMB2蛋白
纯度	> 90 % SDS-PAGE. ab116169 is purified using conventional chromatography techniques.
表达系统	Escherichia coli
Accession	<b><u>P49721</u></b>
蛋白长度	Full length protein
无动物成分	No
性质	Recombinant
种属	Human
序列	<b>MGSSHHHHHSSGLVPRGSHMEYLIQIGPDYVLVASDRV AASNIVQMKD DHDKMFKMSEKILLLCVGEAGDTVQFAEYIQKNVQLYKMRNG YELSPTAA ANFTRRNLADCLRSRTPYHVNLLLAGYDEHEGPALYYMDY LAALAKAPFAAHGYGAFLTLSILDRIYPTPTISRERAVELLRK CLEELQKR FILNLPTFSVRIIDKNGIHDLDNISFPKQGS</b>
预测分子量	25 kDa including tags
氨基酸	1 to 201
标签	His tag N-Terminus

技术指标	
Our <b>Abpromise guarantee</b> covers the use of <b>ab116169</b> in the following tested applications.	
The application notes include recommended starting dilutions; optimal dilutions/concentrations should be determined by the end user.	
应用	Mass Spectrometry SDS-PAGE
质谱法	MALDI-TOF
形式	Liquid
补充说明	This product was previously labelled as PSMB2, Proteasome subunit beta type 2

## 制备和贮存

### 稳定性和存储

Shipped at 4°C. Store at +4°C short term (1-2 weeks). Upon delivery aliquot. Store at -20°C or -80°C. Avoid freeze / thaw cycle.

pH: 8.00

Constituents: 0.02% DTT, 0.32% Tris HCl, 30% Glycerol (glycerin, glycerine), 0.58% Sodium chloride

## 常规信息

### 功能

The proteasome is a multicatalytic proteinase complex which is characterized by its ability to cleave peptides with Arg, Phe, Tyr, Leu, and Glu adjacent to the leaving group at neutral or slightly basic pH. The proteasome has an ATP-dependent proteolytic activity. This subunit has a trypsin-like activity.

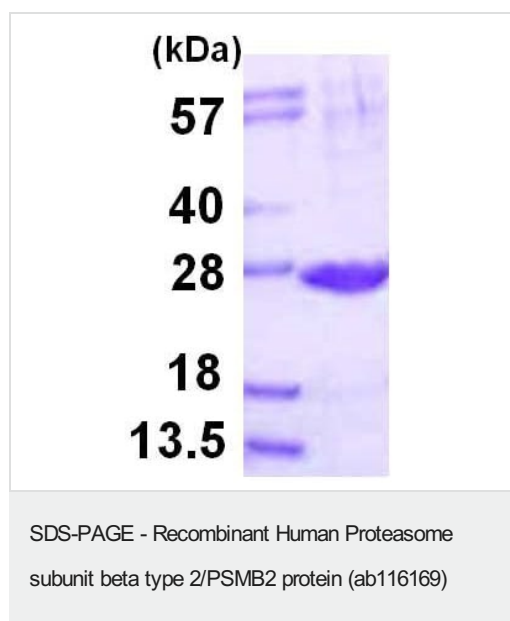
### 序列相似性

Belongs to the peptidase T1B family.

### 细胞定位

Cytoplasm. Nucleus.

## 图片



15% SDS-PAGE showing ab116169 at approximately 24.9 kDa (3µg).

**Please note:** All products are "FOR RESEARCH USE ONLY. NOT FOR USE IN DIAGNOSTIC PROCEDURES"

## Our Abpromise to you: Quality guaranteed and expert technical support

- Replacement or refund for products not performing as stated on the datasheet
- Valid for 12 months from date of delivery
- Response to your inquiry within 24 hours

- We provide support in Chinese, English, French, German, Japanese and Spanish
- Extensive multi-media technical resources to help you
- We investigate all quality concerns to ensure our products perform to the highest standards

If the product does not perform as described on this datasheet, we will offer a refund or replacement. For full details of the Abpromise, please visit <https://www.abcam.cn/abpromise> or contact our technical team.

#### **Terms and conditions**

---

- Guarantee only valid for products bought direct from Abcam or one of our authorized distributors