

Recombinant Human Proteasome 20S C2/HC2 protein ab116156

1 图像

描述

产品名称	重组人Proteasome 20S C2/HC2蛋白
纯度	> 95 % SDS-PAGE. ab116156 is purified using conventional chromatography techniques.
表达系统	Escherichia coli
Accession	<u>P25786</u>
蛋白长度	Full length protein
无动物成分	No
性质	Recombinant
种属	Human
序列	<pre> MGSSHHHHHH SSGLVPRGSH MGSMFRNQYD NDVTWVSPQG RIHQIEYAME AVKQGSATVG LKSKTHAVLV ALKRAQSELA AHQKKILHVD NHIGISIAGL TADARLLCNF MRQECLDSRF VFDRPLPVSRLVSLIGSKTQ IPTQRYGRRP YGVGLLIAGYDDMGP HIFQT CPSANYFDCR AMSIGARSQSARTYLERHMS EFMECNLNEL VKHGLRALRE TLPAEQDLTT KNVIGIVGK DLEFTIYDDD DVSPFLEGLE ERPQRKAQPA QPADEPAEKA DEPMEH </pre>
预测分子量	32 kDa including tags
氨基酸	1 to 263
标签	His tag N-Terminus

技术指标

Our **Abpromise guarantee** covers the use of **ab116156** in the following tested applications.

The application notes include recommended starting dilutions; optimal dilutions/concentrations should be determined by the end user.

应用	Mass Spectrometry
	SDS-PAGE
质谱法	MALDI-TOF
形式	Liquid

补充说明

This product was previously labelled as Proteasome 20S C2

制备和贮存

稳定性和存储

Shipped at 4°C. Store at +4°C short term (1-2 weeks). Upon delivery aliquot. Store at -20°C or -80°C. Avoid freeze / thaw cycle.

pH: 8.00

Constituents: 0.03% DTT, 0.32% Tris HCl, 10% Glycerol (glycerin, glycerine), 0.88% Sodium chloride

常规信息

功能

The proteasome is a multicatalytic proteinase complex which is characterized by its ability to cleave peptides with Arg, Phe, Tyr, Leu, and Glu adjacent to the leaving group at neutral or slightly basic pH. The proteasome has an ATP-dependent proteolytic activity. Mediates the lipopolysaccharide-induced signal transduction in the macrophage proteasome (By similarity). Might be involved in the anti-inflammatory response of macrophages during the interaction with *C.albicans* heat-inactivated cells.

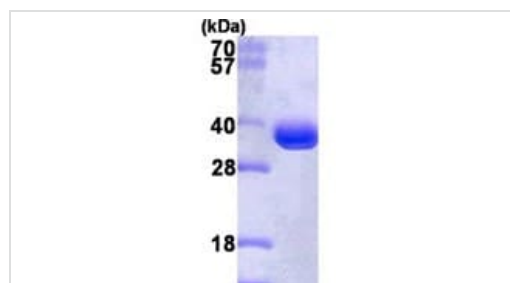
序列相似性

Belongs to the peptidase T1A family.

细胞定位

Cytoplasm. Nucleus.

图片



15% SDS-PAGE showing ab116156 at approximately 32 kDa (3µg).

SDS-PAGE - Recombinant Human Proteasome 20S C2/HC2 protein (ab116156)

Please note: All products are "FOR RESEARCH USE ONLY. NOT FOR USE IN DIAGNOSTIC PROCEDURES"

Our Abpromise to you: Quality guaranteed and expert technical support

- Replacement or refund for products not performing as stated on the datasheet
- Valid for 12 months from date of delivery
- Response to your inquiry within 24 hours
- We provide support in Chinese, English, French, German, Japanese and Spanish

- Extensive multi-media technical resources to help you
- We investigate all quality concerns to ensure our products perform to the highest standards

If the product does not perform as described on this datasheet, we will offer a refund or replacement. For full details of the Abpromise, please visit <https://www.abcam.cn/abpromise> or contact our technical team.

Terms and conditions

- Guarantee only valid for products bought direct from Abcam or one of our authorized distributors