

## Product datasheet

# Recombinant Human Prostaglandin D2 Receptor protein ab117045

### 1 图像

#### 描述

<b>产品名称</b>	重组人Prostaglandin D2 Receptor蛋白
<b>表达系统</b>	Wheat germ
<b>Accession</b>	<b><u>Q13258</u></b>
<b>蛋白长度</b>	Full length protein
<b>无动物成分</b>	No
<b>性质</b>	Recombinant
<b>种属</b>	Human
<b>序列</b>	<pre> MKSPFYRCQNTTSVEKGN SAVMGGVLFSTGLLG NLLALGLLA RSLGWCS RRPLRPLPSVFYMLVCGLTVTDLLGKCLLSPV VLAAYAQNRS LRVLAPAL DNSLCQAF AFFMSFFGLSSTLQLLAMALECWLSLGH PFFYRR HITLRLGA LVAPVVS AFSLAFCALPFMGFGKFVQYCPGTWC FIQMVHEEG SLSVLGYS VLYSSLMALLVLATVLCNLGAMRNLYAMHRR LQRHPRSCTRD CAEPRADG REASPQPLEELD HLLLLALMTVLFMCSLPVIYRAY YGAFKD VKEKNRTS EEAEDLRALRFLSVISIVDPWIFIIFRSPVFR IFFHKIFIRP LRYRSRCS NSTNMESSL </pre>
<b>预测分子量</b>	66 kDa including tags
<b>氨基酸</b>	1 to 359

#### 技术指标

Our **Abpromise guarantee** covers the use of **ab117045** in the following tested applications.

The application notes include recommended starting dilutions; optimal dilutions/concentrations should be determined by the end user.

<b>应用</b>	ELISA
	SDS-PAGE
	Western blot

**形式** Liquid

## 制备和贮存

**稳定性和存储** Shipped on dry ice. Upon delivery aliquot and store at -80°C. Avoid freeze / thaw cycles.  
pH: 8.00  
Constituents: 0.3% Glutathione, 0.79% Tris HCl

## 常规信息

**功能** Receptor for prostaglandin D2 (PGD2). The activity of this receptor is mainly mediated by G(s) proteins that stimulate adenylate cyclase, resulting in an elevation of intracellular cAMP. A mobilization of calcium is also observed, but without formation of inositol 1,4,5-trisphosphate.

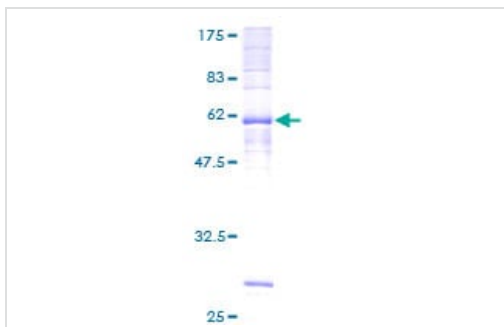
**组织特异性** Expressed in retinal choroid, ciliary epithelium, longitudinal and circular ciliary muscles, iris, small intestine and platelet membranes.

**疾病相关** Genetic variations in PTGDR are associated with susceptibility to asthma-related traits type 1 (ASRT1) [MIM:607277]. Asthma-related traits include clinical symptoms of asthma, such as coughing, wheezing and dyspnea.

**序列相似性** Belongs to the G-protein coupled receptor 1 family.

**细胞定位** Cell membrane.

## 图片



12.5% SDS-PAGE stained with Coomassie Blue showing ab117045 at approximately 65.60 kDa.

SDS-PAGE - Recombinant Human Prostaglandin D2 Receptor protein (ab117045)

**Please note:** All products are "FOR RESEARCH USE ONLY. NOT FOR USE IN DIAGNOSTIC PROCEDURES"

## Our Abpromise to you: Quality guaranteed and expert technical support

- Replacement or refund for products not performing as stated on the datasheet
- Valid for 12 months from date of delivery
- Response to your inquiry within 24 hours

- We provide support in Chinese, English, French, German, Japanese and Spanish
- Extensive multi-media technical resources to help you
- We investigate all quality concerns to ensure our products perform to the highest standards

If the product does not perform as described on this datasheet, we will offer a refund or replacement. For full details of the Abpromise, please visit <https://www.abcam.cn/abpromise> or contact our technical team.

### **Terms and conditions**

---

- Guarantee only valid for products bought direct from Abcam or one of our authorized distributors