

Recombinant human Prolyl Endopeptidase protein ab80376

[1 References](#) [2 图像](#)

描述

产品名称	重组人Prolyl Endopeptidase蛋白
生物活性	Specific Activity: ≥ 12 pmol/min/ μ g. Assay condition: 50 mM Tris (pH 7.5), 100 μ g BSA, 20 μ M substrate and 500 ng Prolyl Endopeptidase protein at room temperature for 30 min.
纯度	> 90 % SDS-PAGE.
表达系统	Escherichia coli
蛋白长度	Full length protein
无动物成分	No
性质	Recombinant
种属	Human
序列	MHHHHHLSLQYPDVYRDETAVQDYHGHKICDPYAWLEDPPDS EQTKAFVE AQNKITVPFLEQCPIRGLYKERMTELYDYPKYSCHFKKGKRY FYFYNTGL QNQRVLYVQDSLEGEARVFLDPNILLSDDGTVALRGYAFSEGD EYFAYGLS ASGSDWVTIKFMKVDGAKELPDVLERVKFSCMAWTHDGKGMF YNSYPQQD GKSDGTETSTNLHQKLYYHVLGTDQSEDILCAEFPDEPKWMG GAELSDDG RYVLLSIREGCDPVNRLWYCDLQQESSGIAGILKWKIDNF EGEYDYVT NEGTVFTFKTNRQSPNYRVINIDFRDPEESKWKVLVPEHEKD VLEWIACV RSNFLVLCYLHDVKNILQLHDLTTGALLKTFPLDVGSIVGYS GQKKDTEI FYQFTSFLSPGIIYHCDLTKEELEPRVFREVTVKGIDASDYQ TVQIFYPS KDGTKIPMFIVHKKGIKLDGSHPAFLYGYGGFNISITPNYSV SRLIFVRH MGGILAVANIRGGGEYGETWHKGGILANKQNCDFDFQCAAAY LIKEGYTS PKRLTINGGSNGLLVAACANQRPD LFGCVIAQVGVMDMLKF HKYTIGHA

WTTDYGCSDSKQHFELVKYSPLHNVKLEPEADDIQPSMLLL
TADHDDR
VPLHSLKFIATLQYIVGRSRKQSNPLLIHVDTKAGHGAGKPT
AKVIEEVS DMFAFIARCLNVDWIP

预测分子量 82 kDa
氨基酸 2 to 710

技术指标

Our **Abpromise guarantee** covers the use of **ab80376** in the following tested applications.

The application notes include recommended starting dilutions; optimal dilutions/concentrations should be determined by the end user.

应用 Functional Studies
SDS-PAGE
形式 Liquid

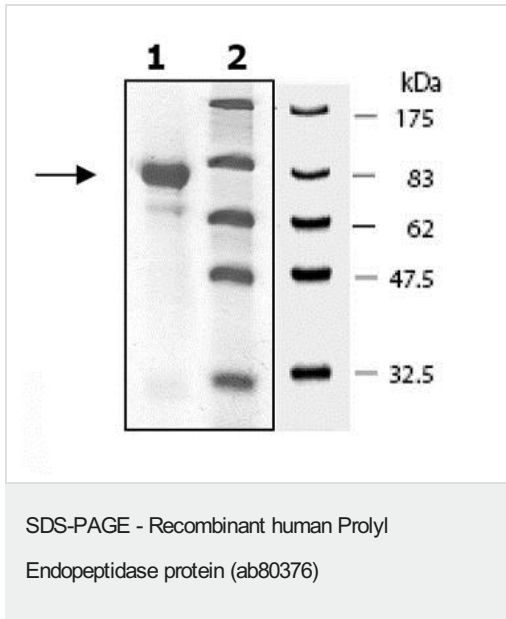
制备和贮存

稳定性和存储 Shipped on Dry Ice. Upon delivery aliquot. Store at -80°C. Avoid freeze / thaw cycle.
pH: 8.00
Constituents: 0.0462% (R*,R*)-1,4-Dimercaptobutan-2,3-diol, 0.395% Tris HCl, 0.05% Tween, 30% Glycerol (glycerin, glycerine), 0.58% Sodium chloride
This product is an active protein and may elicit a biological response in vivo, handle with caution.

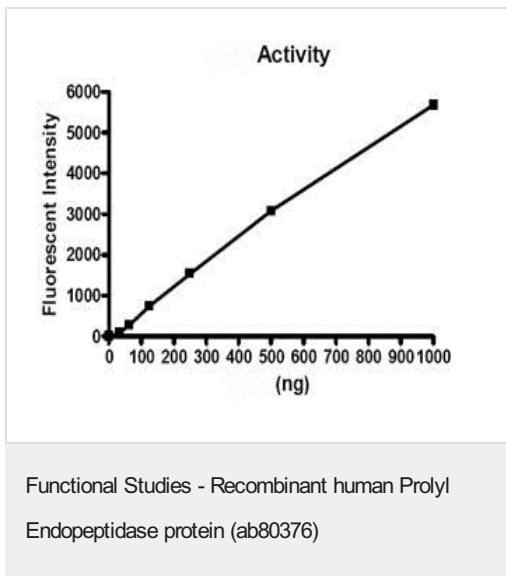
常规信息

功能 Cleaves peptide bonds on the C-terminal side of prolyl residues within peptides that are up to approximately 30 amino acids long.
序列相似性 Belongs to the peptidase S9A family.
翻译后修饰 The N-terminus is blocked.
细胞定位 Cytoplasm.

图片



Lane 1: ab80376 on 10% SDS-PAGE, Coomassie staining, 4µg.
Lane 2: Protein marker.



Please note: All products are "FOR RESEARCH USE ONLY. NOT FOR USE IN DIAGNOSTIC PROCEDURES"

Our Abpromise to you: Quality guaranteed and expert technical support

- Replacement or refund for products not performing as stated on the datasheet

- Valid for 12 months from date of delivery
- Response to your inquiry within 24 hours

- We provide support in Chinese, English, French, German, Japanese and Spanish
- Extensive multi-media technical resources to help you
- We investigate all quality concerns to ensure our products perform to the highest standards

If the product does not perform as described on this datasheet, we will offer a refund or replacement. For full details of the Abpromise, please visit <https://www.abcam.cn/abpromise> or contact our technical team.

Terms and conditions

- Guarantee only valid for products bought direct from Abcam or one of our authorized distributors