

# Recombinant Human Prolactin/PRL protein ab48823

## 2 图像

### 描述

产品名称	重组人Prolactin/PRL蛋白
生物活性	Measured in a cell proliferation assay using Nb2-11 Rat lymphoma cells. The ED50 range ≤ 0.5ng/ml.
纯度	> 95 % SDS-PAGE. Purified by conventional chromatography, after refolding of the isolated inclusion bodies in a renaturation buffer.
表达系统	Escherichia coli
蛋白长度	Full length protein
无动物成分	No
性质	Recombinant
种属	Human
序列	M LPICPGGAA RCQVTLRDLF DRAVVLSHYI HNLSEMSE FDKRYTHGRG FITKAINSCH TSSLATPEDK EQAQQMNQKD FLSLIVSILR SWNEPLYHLV TEVRGMQEAP EAILS KAVEI EEQTKRLLEG MELIVSQVHP ETKENEIYPV WSGLPSLQMA DEESRLSAYY NLLHCLRRDS HKIDNYLKLL KCRIIHNNNC
氨基酸	29 to 227

### 技术指标

Our **Abpromise guarantee** covers the use of **ab48823** in the following tested applications.

The application notes include recommended starting dilutions; optimal dilutions/concentrations should be determined by the end user.

应用	SDS-PAGE
形式	Liquid

### 制备和贮存

稳定性和存储	Shipped at 4°C. Upon delivery aliquot and store at -20°C. Avoid freeze / thaw cycles. pH: 7.40
--------	---

Constituent: PBS

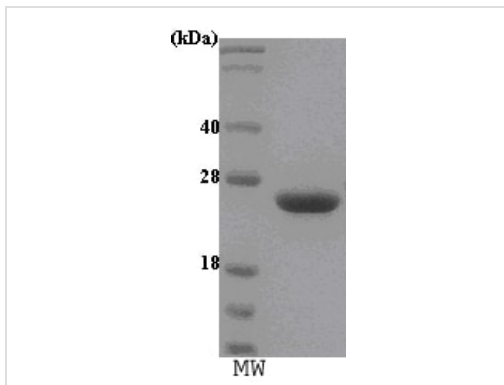
This product is an active protein and may elicit a biological response in vivo, handle with caution.

## 常规信息

**相关性** Various hormones are secreted from the anterior pituitary during development and growth. Prolactin is a growth factor secreted by the anterior pituitary that is necessary for the proliferation and differentiation of the mammary glands.

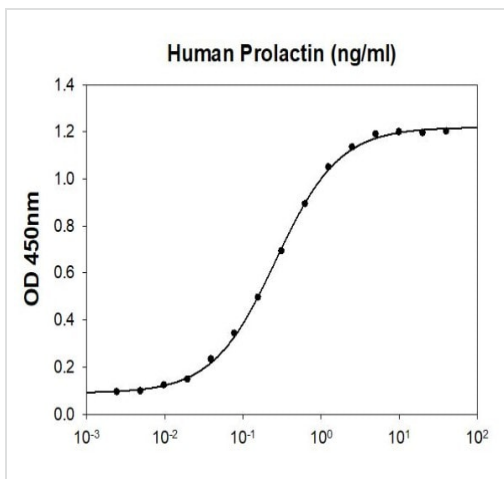
**细胞定位** Secreted

## 图片



ab48823 run on a 15% SDS-PAGE gel with molecular weight markers (MW).

SDS-PAGE - Recombinant Human Prolactin/PRL protein (ab48823)



Human Prolactin in a cell proliferation assay using Nb2-11 Rat lymphoma cells. The ED<sub>50</sub> range ≤ 0.5ng/ml.

Biological Activity - Recombinant Human Prolactin/PRL protein (ab48823)

**Please note:** All products are "FOR RESEARCH USE ONLY. NOT FOR USE IN DIAGNOSTIC PROCEDURES"

## **Our Abpromise to you: Quality guaranteed and expert technical support**

---

- Replacement or refund for products not performing as stated on the datasheet
- Valid for 12 months from date of delivery
- Response to your inquiry within 24 hours
  
- We provide support in Chinese, English, French, German, Japanese and Spanish
- Extensive multi-media technical resources to help you
- We investigate all quality concerns to ensure our products perform to the highest standards

If the product does not perform as described on this datasheet, we will offer a refund or replacement. For full details of the Abpromise, please visit <https://www.abcam.cn/abpromise> or contact our technical team.

## **Terms and conditions**

---

- Guarantee only valid for products bought direct from Abcam or one of our authorized distributors