

Recombinant human PPIL2 protein ab93731

1 图像

描述		
产品名称	重组人PPIL2蛋白	
生物活性	Specific activity is > 290 nmoles/min/mg, and is defined as the amount of enzyme that cleaves 1 μmole of suc-AAPF-pNA per minute at 37°C in Tris-Hcl pH8.0 using chymotrypsin	
纯度	> 95 % SDS-PAGE. Purified using conventional chromatography techniques.	
表达系统	Escherichia coli	
蛋白长度	Full length protein	
无动物成分	No	
性质	Recombinant	
种属	Human	
序列	MGSSHHHHHHSSGLVPRGSHMGKRQHQKDKMYITCAEYTHFY GGKKPDLP QTNFRRLPFDHCSLSLQPFVYPVCTPDGIVFDLLNIVPWLKK YGTNPSNG EKLDGRSLIKLNFSKNSEGKYHCPVLFTVFTNNTIHAVRTT GNVYAYEA VEQLNIKAKNFRDLLTDEPF SRQDIITLQDPTNLDKFNVSNF YHVKNNMK IIDPDEEKAKQDPSYYLKNTNAETRETQELYKEFKGDEILA ATMKAPEK KKVDKLNAAHYSTGKVSASFTSTAMVPETT HEAAAIDEDVLR YQFVKKKG YVRLHTNKGDLNLELHCDLTPKTCENFIRLCKKHYYDGTIFH RSIRNFVI QGGDPTGTGTGGESYWGKPFKDEF RPNLSHTGRGILSMANS G PNSNRSQF FITFRSCAYLDKKHTIFGRVVGGFDVLTAMENVESDPKTD R P KEEIRIDA TTVFVDPYEEADAQIAQERKTQLKVAPETKV KSSQPQAGS Q G PQTFRQGV GKYINPAATEQQRKSPQVPVPLSPCPRRSPVGLGTSAPGSS R LPDDH	
氨基酸	1 to 527	

技术指标

Our **Abpromise guarantee** covers the use of **ab93731** in the following tested applications.

The application notes include recommended starting dilutions; optimal dilutions/concentrations should be determined by the end user.

应用	Functional Studies
	SDS-PAGE
形式	Liquid

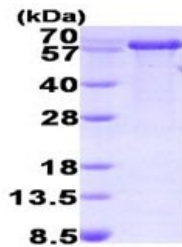
制备和贮存

稳定性和存储	Shipped at 4°C. Store at +4°C short term (1-2 weeks). Upon delivery aliquot. Store at -20°C or -80°C. Avoid freeze / thaw cycle.
	pH: 8.00
	Constituents: 0.316% Tris HCl, 20% Glycerol (glycerin, glycerine), 0.58% Sodium chloride
	This product is an active protein and may elicit a biological response in vivo, handle with caution.

常规信息

功能	PPases accelerate the folding of proteins. It catalyzes the cis-trans isomerization of proline imidic peptide bonds in oligopeptides.
组织特异性	Highest expression in thymus, pancreas and testis. Also detected in heart, placenta, lung, liver, skeletal muscle, kidney, spleen, prostate, ovary, small intestine and colon. Poorly detected in brain and leukocytes. Strong protein expression in lymph node (cortical, paracortical and medullar regions), thyroid (follicular epithelial cells), testis (developing spermatozoa), stomach (cells lining the gastric pit), pancreas, kidney (proximal and distal-tubule cells and collecting duct cells but not in glomeruli), endometrium and colon (goblet cells). Moderate protein expression in spleen, prostate (epithelium and squamous cell carcinomas), placenta and adrenal gland. Weak protein expression in liver, heart, breast, ovary, and lung. No protein expression in brain and bladder. High protein expression in most lymphomas and melanomas.
序列相似性	Belongs to the cyclophilin-type PPase family. PPIL2 subfamily. Contains 1 PPase cyclophilin-type domain. Contains 1 U-box domain.
细胞定位	Nucleus.

图片



15% SDS Page of 3ug ab93731

SDS-PAGE - Recombinant human PPIL2 protein
(ab93731)

Please note: All products are "FOR RESEARCH USE ONLY. NOT FOR USE IN DIAGNOSTIC PROCEDURES"

Our Abpromise to you: Quality guaranteed and expert technical support

- Replacement or refund for products not performing as stated on the datasheet
- Valid for 12 months from date of delivery
- Response to your inquiry within 24 hours
- We provide support in Chinese, English, French, German, Japanese and Spanish
- Extensive multi-media technical resources to help you
- We investigate all quality concerns to ensure our products perform to the highest standards

If the product does not perform as described on this datasheet, we will offer a refund or replacement. For full details of the Abpromise, please visit <https://www.abcam.cn/abpromise> or contact our technical team.

Terms and conditions

- Guarantee only valid for products bought direct from Abcam or one of our authorized distributors