

Recombinant Human PP1C gamma protein ab126675

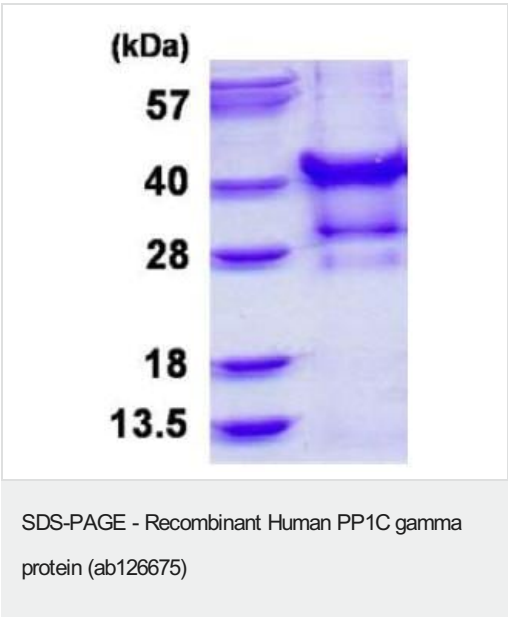
1 图像

描述	
产品名称	重组人PP1C gamma蛋白
纯度	> 85 % SDS-PAGE. Purified using conventional chromatography
表达系统	Escherichia coli
Accession	<b>P36873</b>
蛋白长度	Full length protein
无动物成分	No
性质	Recombinant
种属	Human
序列	MGSSHHHHHH SSGLVPRGSH MADLDKLNID SIIQRLLEVR GSKPGKNVQL QENEIRGLCL KSREIFLSQP ILLELEAPLK ICGDIHGQYY DLLRLFYGG FPPESNYLFL GDYVDRGKQS LETICLLLAY KIKYPENFFL LRGNHECASI NRIYGFYDEC KRRYNIKLWK TFTDCFNCLP IAAIVDEKIF CCHGGLSPDL QSMEQIRRIM RPTDVPDQGL LCDLLWSDPD KDVLGWGEND RGVSFTFGAE VVAKFLHKHD LDLICRAHQV VEDGYEFFAK RQLVTLF SAP NYCGEFDNAG AMMSVDETLM CSFQILKPAE KKKPNATRPV TPPRGMITKQ AKK
预测分子量	39 kDa including tags
氨基酸	1 to 323
标签	His tag N-Terminus

技术指标	
Our <b>Abpromise guarantee</b> covers the use of <b>ab126675</b> in the following tested applications.	
The application notes include recommended starting dilutions; optimal dilutions/concentrations should be determined by the end user.	
应用	SDS-PAGE Mass Spectrometry
质谱法	MALDI-TOF

形式	Liquid
制备和贮存	
稳定性和存储	<p>Shipped at 4°C. Store at +4°C short term (1-2 weeks). Upon delivery aliquot. Store at -20°C or -80°C. Avoid freeze / thaw cycle.</p> <p>pH: 8.00</p> <p>Constituents: 0.03% DTT, 0.32% Tris HCl, 50% Glycerol (glycerin, glycerine), 1.17% Sodium chloride</p>
常规信息	
功能	<p>Protein phosphatase 1 (PP1) is essential for cell division, and participates in the regulation of glycogen metabolism, muscle contractility and protein synthesis. Involved in regulation of ionic conductances and long-term synaptic plasticity. May play an important role in dephosphorylating substrates such as the postsynaptic density-associated Ca(2+)/calmodulin dependent protein kinase II. Component of the PTW/PP1 phosphatase complex, which plays a role in the control of chromatin structure and cell cycle progression during the transition from mitosis into interphase.</p>
序列相似性	Belongs to the PPP phosphatase family. PP-1 subfamily.
细胞定位	<p>Cytoplasm. Nucleus. Nucleus &gt; nucleolus. Nucleus &gt; nucleoplasm. Nucleus speckle.</p> <p>Chromosome &gt; centromere &gt; kinetochore. Cleavage furrow. Midbody. Colocalizes with SPZ1 in the nucleus (By similarity). Rapidly exchanges between the nucleolar, nucleoplasmic and cytoplasmic compartments. Highly mobile in cells and can be relocalized through interaction with targeting subunits. In the presence of PPP1R8 relocalizes from the nucleolus to nuclear speckles. Shows a dynamic targeting to specific sites throughout the cell cycle. Highly concentrated in nucleoli of interphase cells and localizes at kinetochores early in mitosis. Relocalization to chromosome-containing regions occurs at the transition from early to late anaphase. Also accumulates at the cleavage furrow and midbody by telophase.</p>

图片



15% SDS-PAGE analysis of ab126675 (3 µg)

**Please note:** All products are "FOR RESEARCH USE ONLY. NOT FOR USE IN DIAGNOSTIC PROCEDURES"

### **Our Abpromise to you: Quality guaranteed and expert technical support**

---

- Replacement or refund for products not performing as stated on the datasheet
- Valid for 12 months from date of delivery
- Response to your inquiry within 24 hours
- We provide support in Chinese, English, French, German, Japanese and Spanish
- Extensive multi-media technical resources to help you
- We investigate all quality concerns to ensure our products perform to the highest standards

If the product does not perform as described on this datasheet, we will offer a refund or replacement. For full details of the Abpromise, please visit <https://www.abcam.cn/abpromise> or contact our technical team.

### **Terms and conditions**

---

- Guarantee only valid for products bought direct from Abcam or one of our authorized distributors