

# Recombinant human PLK4 protein ab125558

## 5 图像

### 描述

---

产品名称	重组人PLK4蛋白
生物活性	The specific activity of ab125558 is 5.6 nmol/min/mg.
纯度	> 70 % Densitometry. ab125558 is >70% pure.
表达系统	Baculovirus infected Sf9 cells
Accession	<b><u>O00444</u></b>
蛋白长度	Protein fragment
无动物成分	No
性质	Recombinant
种属	Human
预测分子量	140 kDa including tags
氨基酸	1 to 970

### 技术指标

---

Our **Abpromise guarantee** covers the use of **ab125558** in the following tested applications.

The application notes include recommended starting dilutions; optimal dilutions/concentrations should be determined by the end user.

应用	Western blot Functional Studies SDS-PAGE
形式	Liquid
补充说明	<b><u>ab64311</u></b> (Myelin Basic Protein protein) can be utilized as a substrate for assessing kinase activity

### 制备和贮存

---

稳定性和存储	Shipped on dry ice. Upon delivery aliquot and store at -80°C. Avoid freeze / thaw cycles. pH: 7.50 Constituents: 25% Glycerol (glycerin, glycerine), 0.003% EDTA, 0.79% Tris HCl, 0.004% DTT, 0.002% PMSF, 0.31% Glutathione, 0.88% Sodium chloride
--------	---

This product is an active protein and may elicit a biological response in vivo, handle with caution.

## 常规信息

### 功能

Serine/threonine-protein kinase that plays a central role in centriole duplication. Able to trigger procentriole formation on the surface of the parental centriole cylinder, leading to the recruitment of centriole biogenesis proteins such as SASS6, CENPJ/CPAP, CP110, CEP135 and gamma-tubulin. When overexpressed, it is able to induce centrosome amplification through the simultaneous generation of multiple procentrioles adjoining each parental centriole during S phase. Its central role in centriole replication suggests a possible role in tumorigenesis, centrosome aberrations being frequently observed in tumors. Also involved in trophoblast differentiation by phosphorylating HAND1, leading to disrupt the interaction between HAND1 and MDFIC and activate HAND1. Phosphorylates CDC25C and CHEK2/CHK2.

### 序列相似性

Belongs to the protein kinase superfamily. Ser/Thr protein kinase family. CDC5/Polo subfamily. Contains 1 POLO box domain. Contains 1 protein kinase domain.

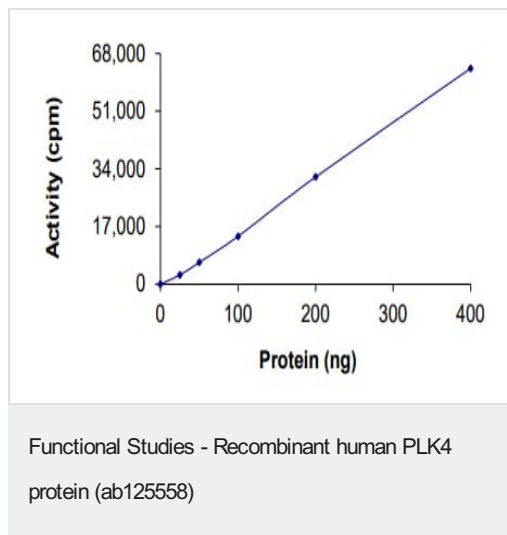
### 翻译后修饰

Ubiquitinated; leading to its degradation by the proteasome. Tyrosine-phosphorylated by TEC.

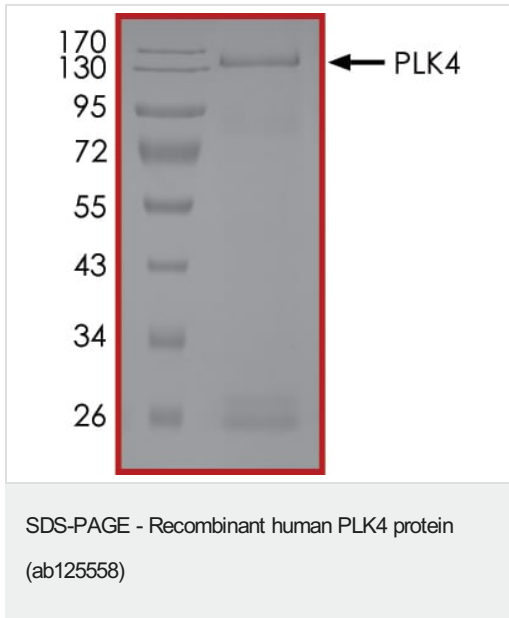
### 细胞定位

Cytoplasm > cytoskeleton > centrosome > centriole. Nucleus > nucleolus. Cleavage furrow. Associates with centrioles throughout the cell cycle. According to PubMed:16244668, it is not present at cleavage furrows.

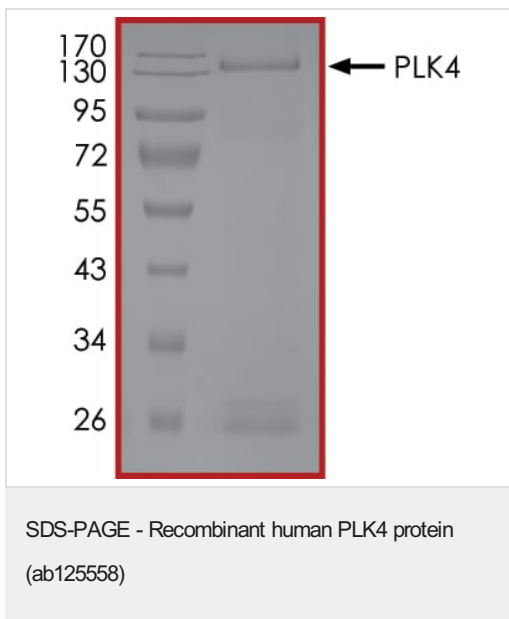
## 图片



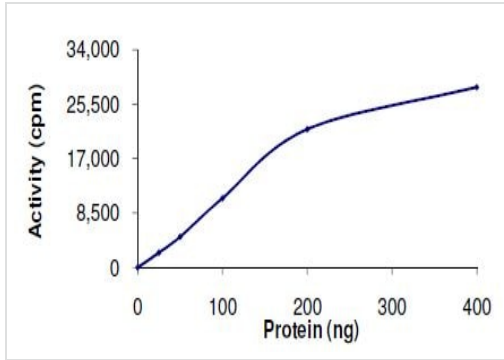
The specific activity of PLK4 (ab125558) was determined to be 6 nmol/min/mg as per activity assay protocol



SDS PAGE analysis of ab125558

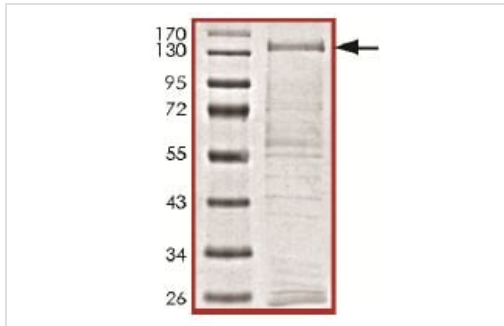


SDS PAGE analysis of ab125558



The specific activity of ab125558 was determined to be 5.6 nmol/min/mg.

Functional Studies - Recombinant human PLK4 protein (ab125558)



SDS PAGE analysis of ab125558 (PLK4 protein).

SDS-PAGE - Recombinant human PLK4 protein (ab125558)

**Please note:** All products are "FOR RESEARCH USE ONLY. NOT FOR USE IN DIAGNOSTIC PROCEDURES"

### Our Abpromise to you: Quality guaranteed and expert technical support

- Replacement or refund for products not performing as stated on the datasheet
- Valid for 12 months from date of delivery
- Response to your inquiry within 24 hours
- We provide support in Chinese, English, French, German, Japanese and Spanish
- Extensive multi-media technical resources to help you
- We investigate all quality concerns to ensure our products perform to the highest standards

If the product does not perform as described on this datasheet, we will offer a refund or replacement. For full details of the Abpromise, please visit <https://www.abcam.cn/abpromise> or contact our technical team.

## Terms and conditions

---

- Guarantee only valid for products bought direct from Abcam or one of our authorized distributors