

Recombinant human PLK3 protein ab42603

2 图像

描述

产品名称	重组人PLK3蛋白
生物活性	Specific Activity: ≥ 110 pmol/min/ μ g. Assay Conditions: 40 mM Tris-HCl pH 7.4, 20 mM MgCl ₂ , 0.1 mg/mL BSA and 1mMDTT using 1 mg/ml Casein substrate and 20 μ M ATP. Reaction was done at 30°C for 45 min.
纯度	≥ 68 % SDS-PAGE. Affinity purified.
表达系统	Baculovirus infected Sf9 cells
蛋白长度	Full length protein
无动物成分	No
性质	Recombinant
种属	Human
序列	<pre> SGR TYLKGRLLGK GGFARCYEAT DTETGSAYAV KVIPQSRVAK PHQREKILNE IELHRDLQHR HIVRFSHHFE DADNIYIFLE LCSRKSLAHI WKARHTLLEP EVRYYLQRIL SGLKYLHQRG ILHRDLKLGN FFITENMELK VGDFGLAARL EPPEQRKKTII CGTPNYVAPE VLLRQGHGPE ADVWSLGCVM YTLCCGSPPF ETADLKETYR CIKQVHYTLP ASLSLPARQL LAAILRASPR DRPSIDQILR HDFFTKGYTP DRLPISSCVT VPDLTTPNP </pre>
氨基酸	58 to 339
标签	His tag N-Terminus

技术指标

Our **Abpromise guarantee** covers the use of **ab42603** in the following tested applications.

The application notes include recommended starting dilutions; optimal dilutions/concentrations should be determined by the end user.

应用	Functional Studies
形式	Liquid
补充说明	Expressed in a Baculovirus infected Sf9 expression system. Expected molecular weight of 36.7 kDa.

制备和贮存

稳定性和存储

Shipped on Dry Ice. Upon delivery aliquot. Store at -80°C. Avoid freeze / thaw cycle.

pH: 8.00

Constituents: 0.0462% (R*,R*)-1,4-Dimercaptobutan-2,3-diol, 0.395% Tris HCl, 0.05% Tween, 50% Glycerol (glycerin, glycerine), 0.58% Sodium chloride

This product is an active protein and may elicit a biological response in vivo, handle with caution.

常规信息

功能

Serine/threonine protein kinase involved in regulating M phase functions during the cell cycle. May also be part of the signaling network controlling cellular adhesion. In vitro, is able to phosphorylate CDC25C and casein.

组织特异性

Transcripts are highly detected in placenta, lung, followed by skeletal muscle, heart, pancreas, ovaries and kidney and weakly detected in liver and brain. May have a short half-live. In cells of hematopoietic origin, strongly and exclusively detected in terminally differentiated macrophages. Transcript expression appears to be down-regulated in primary lung tumor.

序列相似性

Belongs to the protein kinase superfamily. Ser/Thr protein kinase family. CDC5/Polo subfamily. Contains 2 POLO box domains. Contains 1 protein kinase domain.

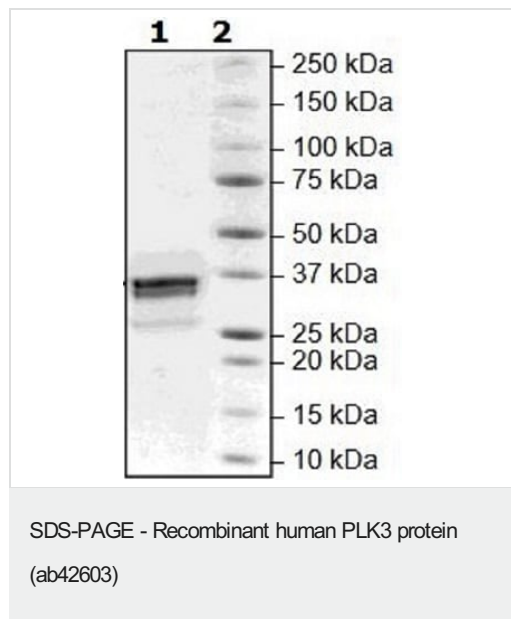
翻译后修饰

Phosphorylated as cells enter mitosis and dephosphorylated as cells exit mitosis.

细胞定位

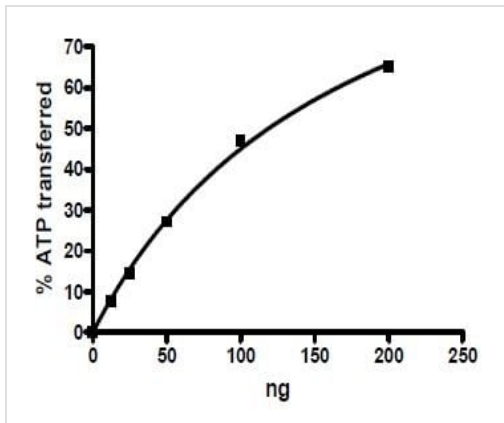
Membrane.

图片



SDS page staining using ab42603 at 2µg. Lane 2: Protein marker.

Observed MV: 37kDa.



Functional Studies - Recombinant human PLK3 protein (ab42603)

Specific activity assay using ab42603.

Assay Conditions: 40 mM Tris-HCl pH 7.4, 20 mM MgCl₂, 0.1 mg/mL BSA and 1 mM DTT using 1 mg/ml Casein substrate and 20 μM ATP. Reaction was done at 30°C for 45 min.

Please note: All products are "FOR RESEARCH USE ONLY. NOT FOR USE IN DIAGNOSTIC PROCEDURES"

Our Abpromise to you: Quality guaranteed and expert technical support

- Replacement or refund for products not performing as stated on the datasheet
- Valid for 12 months from date of delivery
- Response to your inquiry within 24 hours
- We provide support in Chinese, English, French, German, Japanese and Spanish
- Extensive multi-media technical resources to help you
- We investigate all quality concerns to ensure our products perform to the highest standards

If the product does not perform as described on this datasheet, we will offer a refund or replacement. For full details of the Abpromise, please visit <https://www.abcam.cn/abpromise> or contact our technical team.

Terms and conditions

- Guarantee only valid for products bought direct from Abcam or one of our authorized distributors