

Recombinant human PLK3 protein ab125627

4 图像

描述

产品名称	重组人PLK3蛋白
生物活性	The specific activity of PLK3 was determined to be 2.2 nmol/min/mg.
纯度	> 75 % Densitometry. Affinity purified.
表达系统	Baculovirus infected Sf9 cells
Accession	<u>Q9H4B4</u>
蛋白长度	Protein fragment
无动物成分	No
性质	Recombinant
种属	Human
预测分子量	60 kDa including tags
氨基酸	57 to 340

技术指标

Our **Abpromise guarantee** covers the use of **ab125627** in the following tested applications.

The application notes include recommended starting dilutions; optimal dilutions/concentrations should be determined by the end user.

应用	Western blot Functional Studies SDS-PAGE
形式	Liquid
补充说明	<u>ab91090</u> (Cow Casein full length protein) can be utilized as a substrate for assessing Kinase activity

制备和贮存

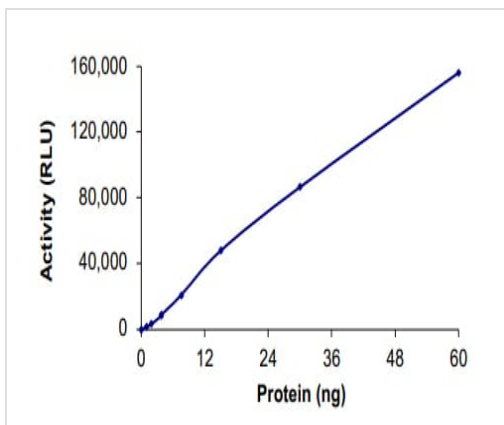
稳定性和存储	Shipped on dry ice. Upon delivery aliquot and store at -80°C. Avoid freeze / thaw cycles. pH: 7.50 Constituents: 0.31% Glutathione, 0.002% PMSF, 0.004% DTT, 0.79% Tris HCl, 0.003% EDTA, 25% Glycerol (glycerin, glycerine), 0.88% Sodium chloride
--------	---

This product is an active protein and may elicit a biological response in vivo, handle with caution.

常规信息

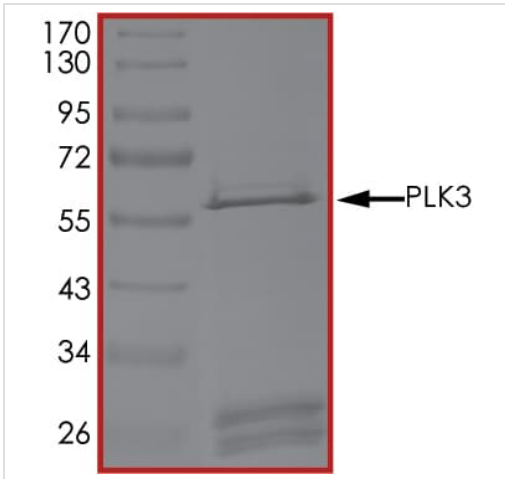
功能	Serine/threonine protein kinase involved in regulating M phase functions during the cell cycle. May also be part of the signaling network controlling cellular adhesion. In vitro, is able to phosphorylate CDC25C and casein.
组织特异性	Transcripts are highly detected in placenta, lung, followed by skeletal muscle, heart, pancreas, ovaries and kidney and weakly detected in liver and brain. May have a short half-live. In cells of hematopoietic origin, strongly and exclusively detected in terminally differentiated macrophages. Transcript expression appears to be down-regulated in primary lung tumor.
序列相似性	Belongs to the protein kinase superfamily. Ser/Thr protein kinase family. CDC5/Polo subfamily. Contains 2 POLO box domains. Contains 1 protein kinase domain.
翻译后修饰	Phosphorylated as cells enter mitosis and dephosphorylated as cells exit mitosis.
细胞定位	Membrane.

图片



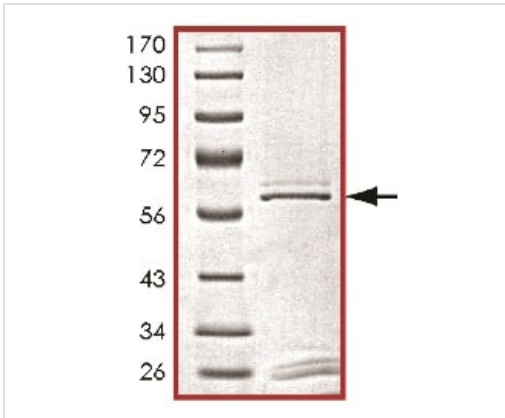
The specific activity of PLK3 (ab125627) was determined to be 9 nmol/min/mg as per activity assay protocol and was equivalent to 2.2 nmol/min/mg as per radiometric assay

Functional Studies - Recombinant human PLK3 protein (ab125627)



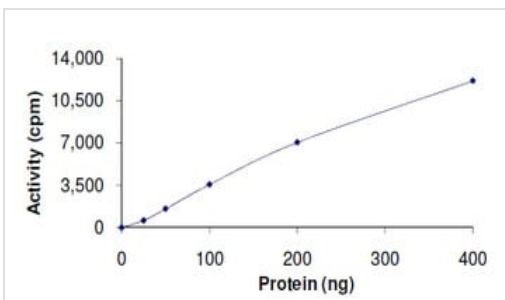
SDS PAGE analysis of ab125627

SDS-PAGE - Recombinant human PLK3 protein (ab125627)



SDS-PAGE of Human PLK3 protein.

SDS-PAGE - Recombinant human PLK3 protein (ab125627)



The specific activity of ab125627 was determined to be 2.2 nmol/min/mg.

Functional Studies - Recombinant human PLK3 protein (ab125627)

Please note: All products are "FOR RESEARCH USE ONLY. NOT FOR USE IN DIAGNOSTIC PROCEDURES"

Our Abpromise to you: Quality guaranteed and expert technical support

- Replacement or refund for products not performing as stated on the datasheet
- Valid for 12 months from date of delivery
- Response to your inquiry within 24 hours

- We provide support in Chinese, English, French, German, Japanese and Spanish
- Extensive multi-media technical resources to help you
- We investigate all quality concerns to ensure our products perform to the highest standards

If the product does not perform as described on this datasheet, we will offer a refund or replacement. For full details of the Abpromise, please visit <https://www.abcam.cn/abpromise> or contact our technical team.

Terms and conditions

- Guarantee only valid for products bought direct from Abcam or one of our authorized distributors