

Recombinant Human PLGF protein ab84148

2 图像

描述

产品名称	重组人PLGF蛋白
纯度	> 95 % SDS-PAGE.
表达系统	HEK 293 cells
蛋白长度	Full length protein
无动物成分	No
性质	Recombinant
种属	Human
序列	Theoretical Sequence: LPAVPPQWALSAGNGSSEVEVVPFQEVWGRSYCRALER LVDVVSEYP SEVEHMFSPSCVSLLRCTGCCGDENLHCVPVETANVTMQ LLKIRSGDR PSYVELTFSQHVRCECRPLREKMKPERCGDAVPRR

技术指标

Our **Abpromise guarantee** covers the use of **ab84148** in the following tested applications.

The application notes include recommended starting dilutions; optimal dilutions/concentrations should be determined by the end user.

应用	SDS-PAGE
形式	Lyophilized

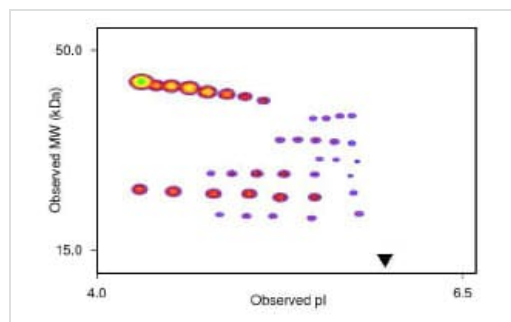
制备和贮存

稳定性和存储	Shipped at 4°C. After reconstitution store at -20°C. Avoid freeze / thaw cycles. Constituents: 1% Human serum albumin, 10% Trehalose
复溶	It is recommended that 0.5 ml of sterile phosphate-buffered saline be added to the vial. Following reconstitution short-term storage at 4°C is recommended, with longer-term storage in aliquots at -18 to -20°C. Repeated freeze thawing is not recommended.

常规信息

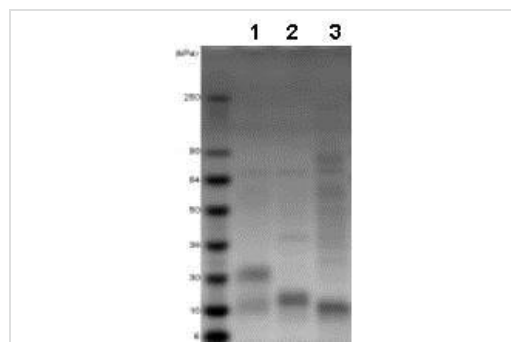
功能	Growth factor active in angiogenesis and endothelial cell growth, stimulating their proliferation and migration. It binds to the receptor FLT1/VEGFR-1. Isoform PIGF-2 binds NRP1/neuropilin-1 and NRP2/neuropilin-2 in a heparin-dependent manner.
组织特异性	While the three isoforms are present in most placental tissues, PIGF-2 is specific to early (8 week) placenta and only PIGF-1 is found in the colon and mammary carcinomas.
序列相似性	Belongs to the PDGF/VEGF growth factor family.
结构域	Isoform PIGF-2 contains a basic insert which acts as a cell retention signal.
翻译后修饰	N-glycosylated.
细胞定位	Secreted. The three isoforms are secreted but PIGF-2 appears to remain cell attached unless released by heparin.

图片



Densitometry of protein isoforms visualised by 2-DE.
 The densitometry scan demonstrates the purified human cell expressed protein exists in multiple isoforms, which differ according to their level of post-translational modification.
 The triangle indicates the theoretical MW and pI of the protein.

Functional Studies - Recombinant Human PLGF protein (ab84148)



1D SDS-PAGE of ab84148 before and after treatment with glycosidases to remove oligosaccharides.
 Lane 1: ab84148
 Lane 2: ab84148 treated with PNGase F to remove potential N-linked glycans
 Lane 3: ab84148 treated with a glycosidase cocktail to remove potential N- and O-linked glycans.
 10µg protein loaded per lane; Deep Purple™ stained.

SDS-PAGE - Recombinant Human PLGF protein (ab84148)

Drop in MW after treatment with PNGase F indicates presence of N-linked glycans. A further drop in MW after treatment with the glycosidase cocktail indicates the presence of O-linked glycans. Additional bands in lane 2 and lane 3 are glycosidase enzymes.

Please note: All products are "FOR RESEARCH USE ONLY. NOT FOR USE IN DIAGNOSTIC PROCEDURES"

Our Abpromise to you: Quality guaranteed and expert technical support

- Replacement or refund for products not performing as stated on the datasheet
- Valid for 12 months from date of delivery
- Response to your inquiry within 24 hours

- We provide support in Chinese, English, French, German, Japanese and Spanish
- Extensive multi-media technical resources to help you
- We investigate all quality concerns to ensure our products perform to the highest standards

If the product does not perform as described on this datasheet, we will offer a refund or replacement. For full details of the Abpromise, please visit <https://www.abcam.cn/abpromise> or contact our technical team.

Terms and conditions

- Guarantee only valid for products bought direct from Abcam or one of our authorized distributors