

Recombinant human PKC beta 2 protein ab60841

2 References 5 图像

| | | |
|-----------|---|--|
| 描述 | | |
| 产品名称 | 重组人PKC beta 2蛋白 | |
| 生物活性 | 423 nmol/min/mg Specific activity defined by radiometric assay, nmol of gamma-phosphate from ATP transferred to PKCtide peptide substrate | |
| 纯度 | > 70 % Affinity purified. Purified by affinity chromatography | |
| 表达系统 | Baculovirus infected Sf9 cells | |
| Accession | <u>P05771-2</u> | |
| 蛋白长度 | Full length protein | |
| 无动物成分 | No | |
| 性质 | Recombinant | |
| 种属 | Human | |
| 序列 | MADPAAGPPP SEGEESTVRF ARKGALRQKN VHEVKNHKFT ARFFKQPTFC SHCTDFIWGF GKQGFQCQVC CFVVHKRCHE FVTFSCPGAD KGPASDDPRS KHKFKIHTYS SPTFCDHCGS LLYGLIHQGM KCDTCMMNVH KRCVMNVPSL CGTDHTERRG RIYIQAHIDR DVLIVLVRDA KNLVPMDPNG LSDPYVKLKL IPDPKSESKQ KTKTIKCSLN PEWNETFRFQ LKESDKDRRL SVEIWDWDLT SRNDFMGSL SFGISELQKAS VDGWFKLLSQ EEGEYFNVPV PPEGSEANEE LRQKFERAKI SQGTKVPEEK TTNTVSKFDN NGNRDRMKLT DFNFLMVLGK GSFGKVMLSE RKGTDELYAV KILKKDVVIQ DDDVECTMVE KRVLALPGKP PFLTQLHSCF QTMDRLYFVM EYVNGGDLMY HIQQVGRFKE PHAVFYAAEI AIGLFFLQSK GIIYRDLKLD NVMLDSEGHI KIADFGMCKE NIWDGVTTKT FCGTPDYIAP EIIAYQPYGK SVDWWAFGVL LYEMLAGQAP FEGEDELEF QSIMEHNVAY PKSMSKEAVA ICKGLMTKHP GKRLGCGPEG ERDIKEHAFF RYIDWEKLER KEIQPPYKPK ACGRNAENFD RFFTRHPPVL TPPDQEVIRN IDQSEFEGFS FVNSEFLKPE VKS | |

| | |
|-------|--------------------|
| 预测分子量 | 105 kDa |
| 氨基酸 | 1 to 671 |
| 标签 | GST tag N-Terminus |

技术指标

Our **Abpromise guarantee** covers the use of **ab60841** in the following tested applications.

The application notes include recommended starting dilutions; optimal dilutions/concentrations should be determined by the end user.

| | |
|------|---|
| 应用 | Functional Studies SDS-PAGE |
| 形式 | Liquid |
| 补充说明 | ab204856 (CREB peptide) can be utilized as a substrate for assessing kinase activity |

制备和贮存

| | |
|--------|---|
| 稳定性和存储 | Shipped on dry ice. Upon delivery aliquot and store at -80°C. Avoid freeze / thaw cycles. pH: 7.50 Constituents: 0.00174% PMSF, 0.00385% DTT, 0.79% Tris HCl, 0.00292% EDTA, 25% Glycerol (glycerin, glycerine), 0.87% Sodium chloride, 0.31% Glutathione This product is an active protein and may elicit a biological response in vivo, handle with caution. |
|--------|---|

常规信息

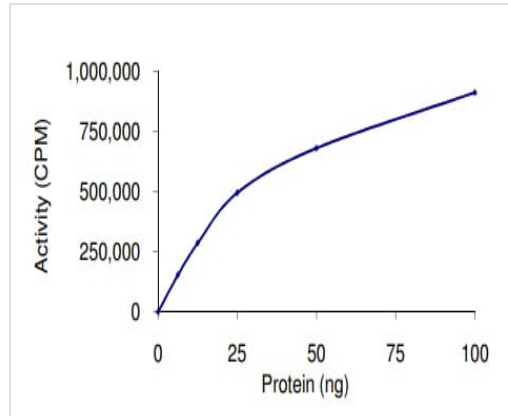
| | |
|-------|--|
| 功能 | Calcium-activated and phospholipid-dependent serine/threonine-protein kinase involved in various processes such as regulation of the B-cell receptor (BCR) signalosome, apoptosis and transcription regulation. Plays a key role in B-cell activation and function by regulating BCR-induced NF-kappa-B activation and B-cell survival. Required for recruitment and activation of the IKK kinase to lipid rafts and mediates phosphorylation of CARD11/CARMA1 at 'Ser-559', 'Ser-644' and 'Ser-652', leading to activate the NF-kappa-B signaling. Involved in apoptosis following oxidative damage: in case of oxidative conditions, specifically phosphorylates 'Ser-36' of isoform p66Shc of SHC1, leading to mitochondrial accumulation of p66Shc, where p66Shc acts as a reactive oxygen species producer. Acts as a coactivator of androgen receptor (ANDR)-dependent transcription, by being recruited to ANDR target genes and specifically mediating phosphorylation of 'Thr-6' of histone H3 (H3T6ph), a specific tag for epigenetic transcriptional activation that prevents demethylation of histone H3 'Lys-4' (H3K4me) by LSD1/KDM1A. Also involved in triglyceride homeostasis. Serves as the receptor for phorbol esters, a class of tumor promoters. |
| 序列相似性 | Belongs to the protein kinase superfamily. AGC Ser/Thr protein kinase family. PKC subfamily. Contains 1 AGC-kinase C-terminal domain. Contains 1 C2 domain. Contains 2 phorbol-ester/DAG-type zinc fingers. Contains 1 protein kinase domain. |
| 翻译后修饰 | Phosphorylation on Thr-500 within the activation loop renders it competent to autophosphorylate. Subsequent autophosphorylation of Thr-642 maintains catalytic competence, and autophosphorylation on Ser-661 appears to release the kinase into the cytosol. |

Autophosphorylation on other sites i.e. in the N-terminal and hinge regions have no effect on enzyme activity.

细胞定位

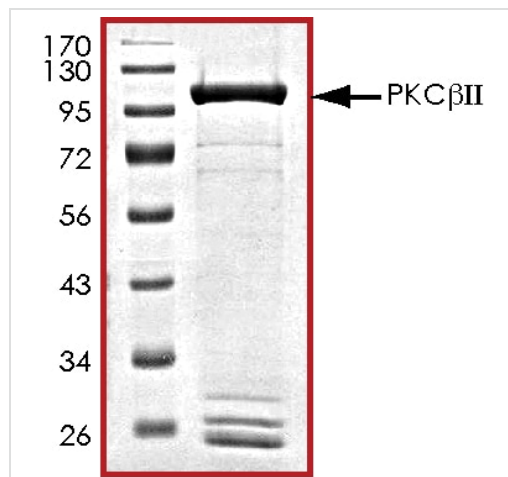
Cytoplasm. Nucleus. Membrane.

图片



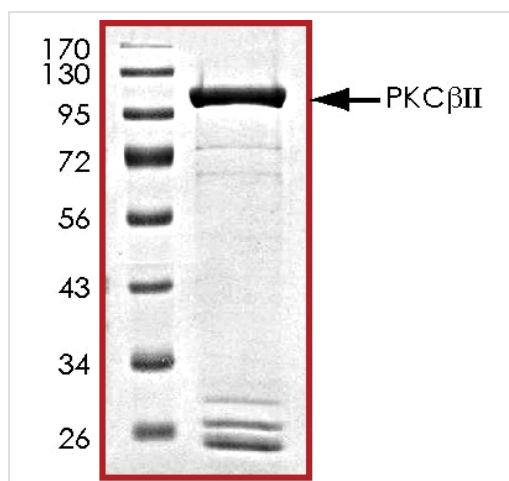
The specific activity of PKC beta 2 (ab60841) was determined to be 423 nmol/min/mg as per activity assay protocol

Functional Studies - Recombinant human PKC beta 2 protein (ab60841)



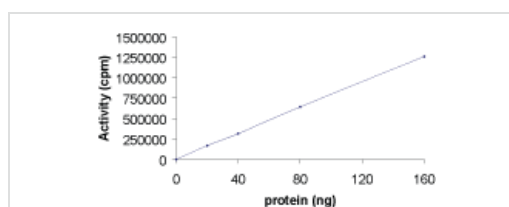
SDS PAGE analysis of ab60841

SDS-PAGE - Recombinant human PKC beta 2 protein (ab60841)



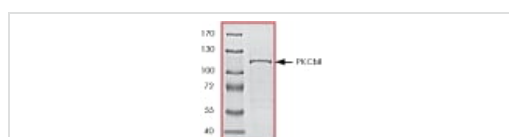
SDS PAGE analysis of ab60841

SDS-PAGE - Recombinant human PKC beta 2 protein (ab60841)



Sample Kinase Activity Plot.

Functional Studies - Recombinant human PKC beta 2 protein (ab60841)



ab60841 on SDS-PAGE, MW ~105 kDa.

SDS-PAGE - Recombinant human PKC beta 2 protein (ab60841)

Please note: All products are "FOR RESEARCH USE ONLY. NOT FOR USE IN DIAGNOSTIC PROCEDURES"

Our Abpromise to you: Quality guaranteed and expert technical support

- Replacement or refund for products not performing as stated on the datasheet
- Valid for 12 months from date of delivery
- Response to your inquiry within 24 hours
- We provide support in Chinese, English, French, German, Japanese and Spanish
- Extensive multi-media technical resources to help you
- We investigate all quality concerns to ensure our products perform to the highest standards

If the product does not perform as described on this datasheet, we will offer a refund or replacement. For full details of the Abpromise, please visit <https://www.abcam.cn/abpromise> or contact our technical team.

Terms and conditions

- Guarantee only valid for products bought direct from Abcam or one of our authorized distributors