

Recombinant human PKA beta (catalytic subunit) protein  
ab60837

6 图像

描述	
产品名称	重组人PKA beta (catalytic subunit)蛋白
纯度	> 90 % SDS-PAGE. Purity: >90% as determined by densitometry. Affinity purified.
表达系统	Baculovirus infected Sf9 cells
蛋白长度	Full length protein
无动物成分	No
性质	Recombinant
种属	Human
预测分子量	65 kDa including tags
标签	GST tag N-Terminus

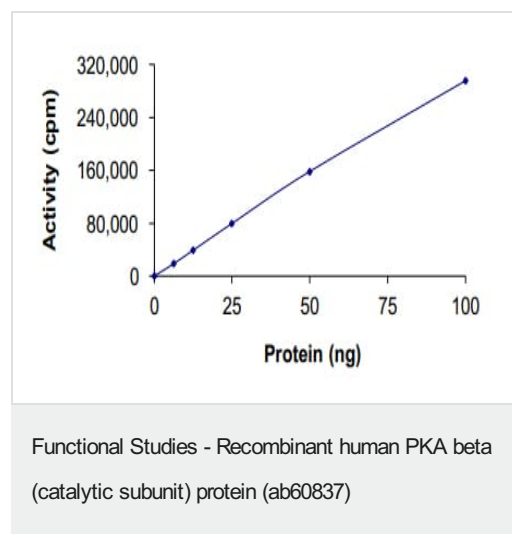
技术指标	
Our <b>Abpromise guarantee</b> covers the use of <b>ab60837</b> in the following tested applications.	
The application notes include recommended starting dilutions; optimal dilutions/concentrations should be determined by the end user.	
应用	Functional Studies SDS-PAGE Western blot
形式	Liquid
补充说明	<b>ab204856</b> (CREB peptide) can be utilized as a substrate for assessing kinase activity

制备和贮存	
稳定性和存储	Shipped on dry ice. Upon delivery aliquot and store at -80°C. Avoid freeze / thaw cycles. pH: 7.50 Constituents: 0.0038% EGTA, 0.00174% PMSF, 0.00385% DTT, 0.79% Tris HCl, 0.00292% EDTA, 25% Glycerol (glycerin, glycerine), 0.87% Sodium chloride This product is an active protein and may elicit a biological response in vivo, handle with caution.

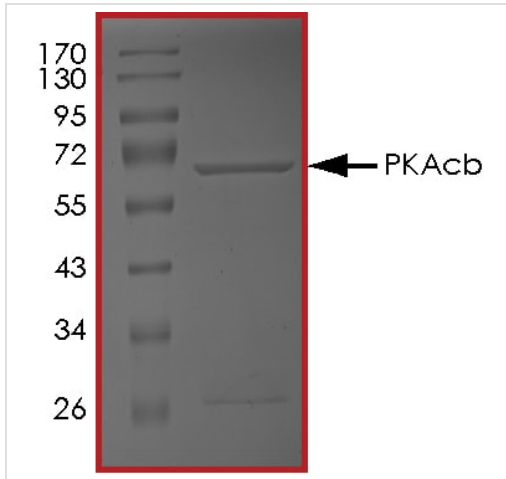
## 常规信息

功能	Mediates cAMP-dependent signaling triggered by receptor binding to GPCRs. PKA activation regulates diverse cellular processes such as cell proliferation, the cell cycle, differentiation and regulation of microtubule dynamics, chromatin condensation and decondensation, nuclear envelope disassembly and reassembly, as well as regulation of intracellular transport mechanisms and ion flux.
组织特异性	Isoform 1 is most abundant in the brain, with low level expression in kidney. Isoform 2 is predominantly expressed in thymus, spleen and kidney. Isoform 3 and isoform 4 are only expressed in the brain.
序列相似性	Belongs to the protein kinase superfamily. AGC Ser/Thr protein kinase family. cAMP subfamily. Contains 1 AGC-kinase C-terminal domain. Contains 1 protein kinase domain.
翻译后修饰	Asn-3 is partially deaminated to Asp giving rise to 2 major isoelectric variants, called CB and CA respectively.
细胞定位	Cytoplasm. Nucleus. Translocates into the nucleus (monomeric catalytic subunit) (By similarity). The inactive holoenzyme is found in the cytoplasm.

## 图片

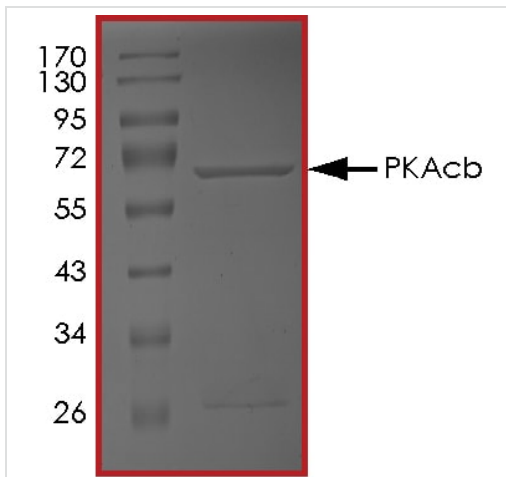


The specific activity of PKA beta (catalytic subunit) (ab60837) was determined to be 430 nmol/min/mg as per activity assay protocol



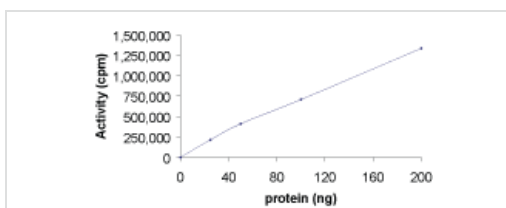
SDS PAGE analysis of ab60837

SDS-PAGE - Recombinant human PKA beta  
(catalytic subunit) protein (ab60837)



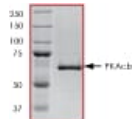
SDS PAGE analysis of ab60837

SDS-PAGE - Recombinant human PKA beta  
(catalytic subunit) protein (ab60837)



Sample Kinase Activity Plot.

Functional Studies - Recombinant human PKA beta  
(catalytic subunit) protein (ab60837)



ab60837 on SDS-PAGE, MW ~65 kDa.

SDS-PAGE - Recombinant human PKA beta  
(catalytic subunit) protein (ab60837)



Western blot - Recombinant human PKA beta  
(catalytic subunit) protein (ab60837)

**Please note:** All products are "FOR RESEARCH USE ONLY. NOT FOR USE IN DIAGNOSTIC PROCEDURES"

### Our Abpromise to you: Quality guaranteed and expert technical support

- Replacement or refund for products not performing as stated on the datasheet
- Valid for 12 months from date of delivery
- Response to your inquiry within 24 hours
- We provide support in Chinese, English, French, German, Japanese and Spanish
- Extensive multi-media technical resources to help you
- We investigate all quality concerns to ensure our products perform to the highest standards

If the product does not perform as described on this datasheet, we will offer a refund or replacement. For full details of the Abpromise, please visit <https://www.abcam.cn/abpromise> or contact our technical team.

### Terms and conditions

- Guarantee only valid for products bought direct from Abcam or one of our authorized distributors