

# Recombinant Human PINCH 1 protein ab116807

## 1 图像

### 描述

产品名称	重组人PINCH 1蛋白
表达系统	Wheat germ
Accession	<b><u>P48059</u></b>
蛋白长度	Full length protein
无动物成分	No
性质	Recombinant
种属	Human
序列	MANALASATCERCKGGFAPAEEKIVNSNGELYHEQCFVCAQCF QQFPEGLF YEFEGRKYCEHDFQMLFAPCCHQCGEFIIIGRVIKAMNNSWHP ECFRCDLC QEVLADIGFVKNAGRHLCRPCHNREKARGLGKYICQKCHAI DEQPLIFK NDPYHPDHFNCANCGKELTADARELKGELYCLPCHDKMGVPI CGACRRPI EGRVVNAMGKQWHVEHFVCAKCEKPFLGHRHYERKGLAYCET HYNQLFGD VCFHCNRVIEGDVVSALNKAWCVNCFACSTCNTKLTLLKNKFV EFDMPVC KKCYEKFPLELKKRLKLAETLGRK
预测分子量	62 kDa including tags
氨基酸	1 to 325
标签	GST tag N-Terminus

### 技术指标

Our **Abpromise guarantee** covers the use of **ab116807** in the following tested applications.

The application notes include recommended starting dilutions; optimal dilutions/concentrations should be determined by the end user.

应用	ELISA Western blot SDS-PAGE
形式	Liquid

## 补充说明

This product was previously labelled as LIMS1.

## 制备和贮存

---

### 稳定性和存储

Shipped on dry ice. Upon delivery aliquot and store at -80°C. Avoid freeze / thaw cycles.

pH: 8.00

Constituents: 0.3% Glutathione, 0.79% Tris HCl

## 常规信息

---

### 功能

Effector of integrin and growth factor signaling, coupling surface receptors to downstream signaling molecules involved in the regulation of cell survival, cell proliferation and cell differentiation. Focal adhesion protein part of the complex ILK-PINCH. This complex is considered to be one of the convergence points of integrin- and growth factor-signaling pathway.

### 组织特异性

Expressed in most tissues except in the brain.

### 序列相似性

Contains 5 LIM zinc-binding domains.

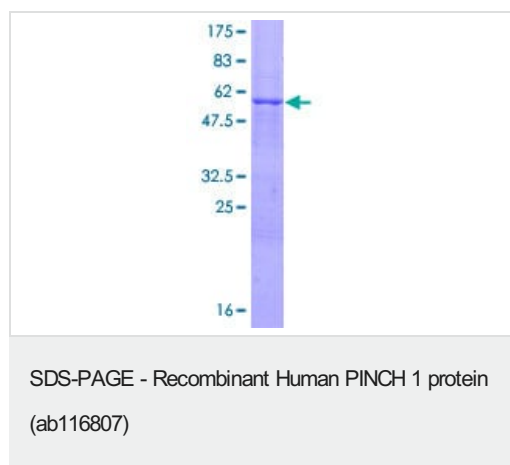
### 细胞定位

Cell junction > focal adhesion. Cell membrane.

---

## 图片

---



12.5% SDS-PAGE showing ab116807 at approximately 61.82kDa.  
Stained with Coomassie Blue.

**Please note:** All products are "FOR RESEARCH USE ONLY. NOT FOR USE IN DIAGNOSTIC PROCEDURES"

## Our Abpromise to you: Quality guaranteed and expert technical support

---

- Replacement or refund for products not performing as stated on the datasheet
- Valid for 12 months from date of delivery
- Response to your inquiry within 24 hours
- We provide support in Chinese, English, French, German, Japanese and Spanish
- Extensive multi-media technical resources to help you

- We investigate all quality concerns to ensure our products perform to the highest standards

If the product does not perform as described on this datasheet, we will offer a refund or replacement. For full details of the Abpromise, please visit <https://www.abcam.cn/abpromise> or contact our technical team.

#### **Terms and conditions**

---

- Guarantee only valid for products bought direct from Abcam or one of our authorized distributors