

Recombinant human PIM3 protein ab204146

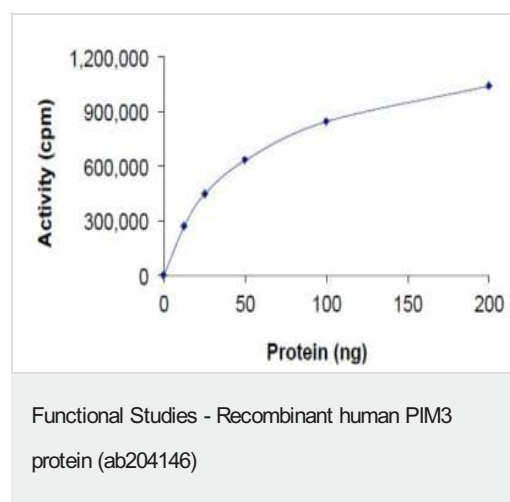
2 图像

描述	
产品名称	重组人PIM3蛋白
生物活性	The specific activity is 900 mol/min/mg.
纯度	> 90 % Densitometry. Affinity purified.
表达系统	Baculovirus infected Sf9 cells
Accession	<u>Q86V86</u>
蛋白长度	Full length protein
无动物成分	No
性质	Recombinant
种属	Human
序列	MLLSKFGSLAHLCPGGVDHLPVKILQPAKADKESFEKAYQV GAVLGSGG FGTVYAGSRIADGLPVAVKHVVKERVTEWGS LGGATVPLEVV LLRKVGAA GGARGVIRLLDWFERP DGFL LVLERPEPAQDLFDFITERGALDEPLAR RFFAQVLA AVRHCHSCGVVHRDIKDENLLVDLRSGELKLIDF GSGALLKD TVYTDFDGTRVYSPPEWIRYHRYHGRSATVWSLGVLLYDMVC GDIPFEQD EEILRGRLLFRRRVSPECQQLIRWCLSLRP SERPSLDQIAAH PWMLGADG GVPESCDLRLCTLD PDDVASTTSSSESL
预测分子量	65 kDa including tags
氨基酸	1 to 326
标签	GST tag N-Terminus

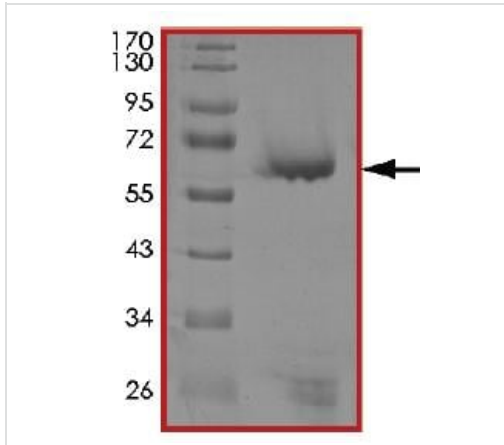
技术指标	
Our <b>Abpromise guarantee</b> covers the use of <b>ab204146</b> in the following tested applications.	
The application notes include recommended starting dilutions; optimal dilutions/concentrations should be determined by the end user.	
应用	Functional Studies SDS-PAGE

形式	Liquid
补充说明	<b>ab204879</b> (RPS6 peptide) can be utilized as a substrate for assessing kinase activity
制备和贮存	
稳定性和存储	<p>Shipped on Dry Ice. Upon delivery aliquot. Store at -80°C. Avoid freeze / thaw cycle.</p> <p>pH: 7.50</p> <p>Constituents: 0.79% Tris HCl, 25% Glycerol (glycerin, glycerine), 0.002% PMSF, 0.004% DTT, 0.87% Sodium chloride, 0.31% Glutathione, 0.003% EDTA</p> <p>This product is an active protein and may elicit a biological response in vivo, handle with caution.</p>
常规信息	
功能	Able to phosphorylate CDKN1B in vitro. Involved in cell cycle progression and suppression of apoptosis. Implicated in proliferation of human hepatoma cell lines.
组织特异性	Widely expressed. No expression in colon, thymus, and small intestine. Expressed in human hepatoma cell lines but not in normal liver tissues. Expressed in colon cancer samples, particularly at the less advanced stages of cancer development.
序列相似性	Belongs to the protein kinase superfamily. CAMK Ser/Thr protein kinase family. PIM subfamily. Contains 1 protein kinase domain.

## 图片



Sample Kinase Activity Plot. ab204146 specific activity was determined to be 900 nmol/min/mg.



SDS-PAGE analysis of ab204146. MW 65 KDa.

SDS-PAGE - Recombinant human PIM3 protein  
(ab204146)

**Please note:** All products are "FOR RESEARCH USE ONLY. NOT FOR USE IN DIAGNOSTIC PROCEDURES"

#### Our Abpromise to you: Quality guaranteed and expert technical support

---

- Replacement or refund for products not performing as stated on the datasheet
- Valid for 12 months from date of delivery
- Response to your inquiry within 24 hours
- We provide support in Chinese, English, French, German, Japanese and Spanish
- Extensive multi-media technical resources to help you
- We investigate all quality concerns to ensure our products perform to the highest standards

If the product does not perform as described on this datasheet, we will offer a refund or replacement. For full details of the Abpromise, please visit <https://www.abcam.cn/abpromise> or contact our technical team.

#### Terms and conditions

---

- Guarantee only valid for products bought direct from Abcam or one of our authorized distributors