

## Product datasheet

# Recombinant human PIM2 protein ab60836

## 4 图像

### 描述

---

产品名称	重组人PIM2蛋白
纯度	> 95 % SDS-PAGE. Purity: >95% as determined by densitometry. Affinity purified.
表达系统	Baculovirus infected Sf9 cells
蛋白长度	Full length protein
无动物成分	No
性质	Recombinant
种属	Human
标签	GST tag N-Terminus

### 技术指标

---

Our **Abpromise guarantee** covers the use of **ab60836** in the following tested applications.

The application notes include recommended starting dilutions; optimal dilutions/concentrations should be determined by the end user.

应用	Functional Studies SDS-PAGE
形式	Liquid
补充说明	<b>ab204880</b> (RPS6 peptide) can be utilized as a substrate for assessing kinase activity

### 制备和贮存

---

稳定性和存储	Shipped on dry ice. Upon delivery aliquot and store at -80°C. Avoid freeze / thaw cycles. pH: 7.50 Constituents: 0.0038% EGTA, 0.00174% PMSF, 0.00385% DTT, 0.79% Tris HCl, 0.00292% EDTA, 25% Glycerol, 0.87% Sodium chloride This product is an active protein and may elicit a biological response in vivo, handle with caution.
--------	--

### 常规信息

---

功能	Promotes cell survival in response to a variety of proliferative signals via positive regulation of the
----	---

IkappaB kinase/NF-kappaB cascade; this process requires phosphorylation of MAP3K8/COT. Prevents apoptosis induced by growth factor withdrawal via inhibition of caspase-3 activation, and via phosphorylation of pro-apoptotic proteins. Inhibits BAD-induced cell death via phosphorylation of BAD. PIM2-mediated cell survival is glucose-dependent but independent of several AKT regulators such as PI3K, HSP-90 and TOR, indicating that PIM2 and PI3K/AKT/TOR function via distinct pathways. Involved in the positive regulation of chondrocyte survival and autophagy in the epiphyseal growth plate.

#### 组织特异性

Highly expressed in hematopoietic tissues, in leukemic and lymphoma cell lines, testis, small intestine, colon and colorectal adenocarcinoma cells. Weakly expressed in normal liver, but highly expressed in hepatocellular carcinoma tissues.

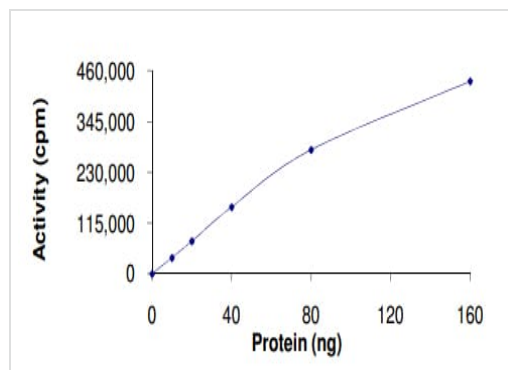
#### 序列相似性

Belongs to the protein kinase superfamily. CAMK Ser/Thr protein kinase family. PIM subfamily. Contains 1 protein kinase domain.

#### 翻译后修饰

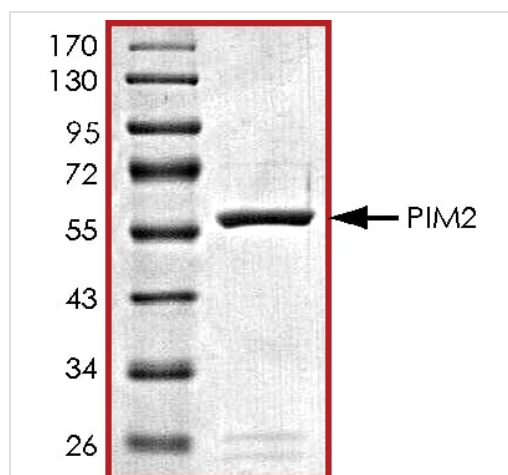
Autophosphorylated.

#### 图片



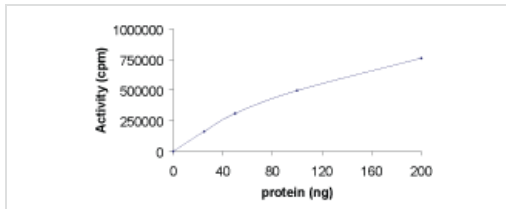
The specific activity of PIM2 (ab60836) was determined to be 270 nmol/min/mg as per activity assay protocol

Functional Studies - Recombinant human PIM2 protein (ab60836)



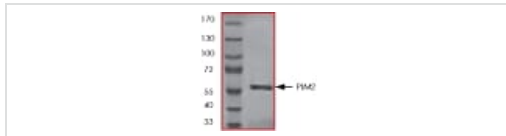
SDS PAGE analysis of ab60836

SDS-PAGE - Recombinant human PIM2 protein (ab60836)



Sample Kinase Activity Plot.

Functional Studies - Recombinant human PIM2 protein (ab60836)



ab60836 on SDS-PAGE, MW ~61kDa.

SDS-PAGE - Recombinant human PIM2 protein (ab60836)

**Please note:** All products are "FOR RESEARCH USE ONLY. NOT FOR USE IN DIAGNOSTIC PROCEDURES"

### Our Abpromise to you: Quality guaranteed and expert technical support

- Replacement or refund for products not performing as stated on the datasheet
- Valid for 12 months from date of delivery
- Response to your inquiry within 24 hours
- We provide support in Chinese, English, French, German, Japanese and Spanish
- Extensive multi-media technical resources to help you
- We investigate all quality concerns to ensure our products perform to the highest standards

If the product does not perform as described on this datasheet, we will offer a refund or replacement. For full details of the Abpromise, please visit <https://www.abcam.cn/abpromise> or contact our technical team.

### Terms and conditions

- Guarantee only valid for products bought direct from Abcam or one of our authorized distributors