

Recombinant human PIM1 protein ab60835

2 References [4 图像](#)

描述

产品名称	重组人PIM1蛋白
纯度	> 90 % SDS-PAGE. Purity: >90% as determined by densitometry. Affinity purified.
表达系统	Baculovirus infected Sf9 cells
蛋白长度	Full length protein
无动物成分	No
性质	Recombinant
种属	Human
标签	GST tag N-Terminus

技术指标

Our **Abpromise guarantee** covers the use of **ab60835** in the following tested applications.

The application notes include recommended starting dilutions; optimal dilutions/concentrations should be determined by the end user.

应用	Functional Studies SDS-PAGE
形式	Liquid
补充说明	<u>ab204880</u> (RPS6 peptide) can be utilized as a substrate for assessing kinase activity

制备和贮存

稳定性和存储	Shipped on dry ice. Upon delivery aliquot and store at -80°C. Avoid freeze / thaw cycles. pH: 7.50 Constituents: 0.0038% EGTA, 0.00174% PMSF, 0.00385% DTT, 0.79% Tris HCl, 0.00292% EDTA, 25% Glycerol (glycerin, glycerine), 0.87% Sodium chloride This product is an active protein and may elicit a biological response in vivo, handle with caution.
--------	--

常规信息

功能	May affect the structure or silencing of chromatin by phosphorylating HP1 gamma/CBX3. Isoform
----	---

2 promotes the G1/S transition of the cell cycle via up-regulation of CDK2 activity and phosphorylation of CDKN1B, resulting in enhanced nuclear export and proteasome-dependent degradation of CDKN1B. Isoform 2 also represses CDKN1B transcription by phosphorylating and inactivating the transcription factor FOXO3. Plays a role in signal transduction in blood cells. Contributes to both cell proliferation and survival and thus provides a selective advantage in tumorigenesis.

组织特异性

Expressed primarily in cells of the hematopoietic and germline lineages. Isoform 1 and isoform 2 are both expressed in prostate cancer cell lines.

序列相似性

Belongs to the protein kinase superfamily. CAMK Ser/Thr protein kinase family. PIM subfamily. Contains 1 protein kinase domain.

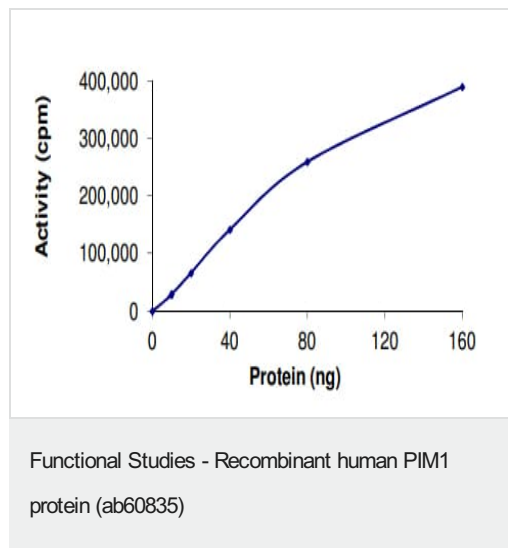
翻译后修饰

Autophosphorylated on both serine/threonine and tyrosine residues.

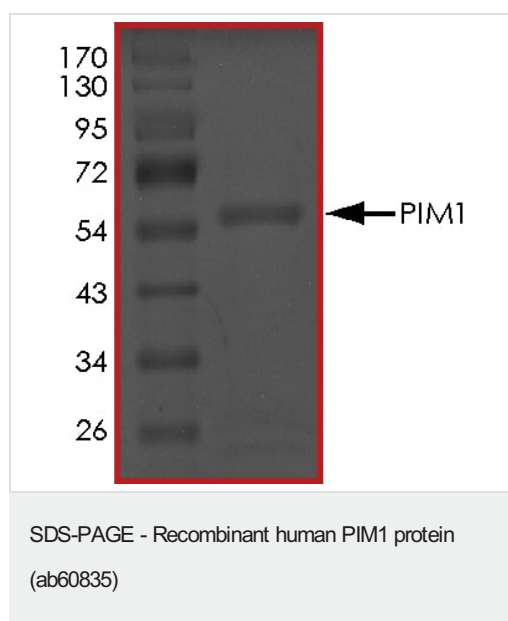
细胞定位

Cytoplasm. Nucleus and Cell membrane.

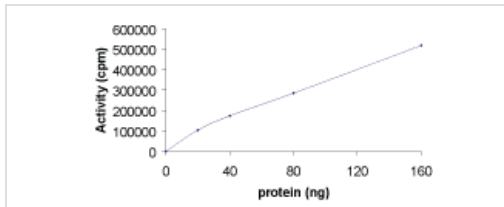
图片



The specific activity of PIM1 (ab60835) was determined to be 270 nmol/min/mg as per activity assay protocol

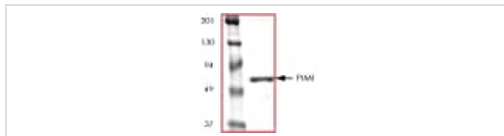


SDS PAGE analysis of ab60835



Sample Kinase Activity Plot.

Functional Studies - Recombinant human PIM1 protein (ab60835)



ab60835 on SDS-PAGE, MW ~62kDa.

SDS-PAGE - Recombinant human PIM1 protein (ab60835)

Please note: All products are "FOR RESEARCH USE ONLY. NOT FOR USE IN DIAGNOSTIC PROCEDURES"

Our Abpromise to you: Quality guaranteed and expert technical support

- Replacement or refund for products not performing as stated on the datasheet
- Valid for 12 months from date of delivery
- Response to your inquiry within 24 hours
- We provide support in Chinese, English, French, German, Japanese and Spanish
- Extensive multi-media technical resources to help you
- We investigate all quality concerns to ensure our products perform to the highest standards

If the product does not perform as described on this datasheet, we will offer a refund or replacement. For full details of the Abpromise, please visit <https://www.abcam.cn/abpromise> or contact our technical team.

Terms and conditions

- Guarantee only valid for products bought direct from Abcam or one of our authorized distributors