

Product datasheet

Recombinant Human Phospholipase C gamma 1/PLC-gamma-1 protein ab112339

1 图像

描述

产品名称	重组人Phospholipase C gamma 1/PLC-gamma-1蛋白
表达系统	Wheat germ
Accession	<u>P19174-2</u>
蛋白长度	Protein fragment
无动物成分	No
性质	Recombinant
种属	Human
序列	LKNNYSEDLELASLLIKIDIFPAKQENGDLSPFSGTSLRERG SDASGQLF HGRAREGSFESRYQQPFEDFRISQEHLADHFDSRERRAPRRT RVNGDNRL
预测分子量	37 kDa including tags
氨基酸	1192 to 1291
标签	GST tag N-Terminus

技术指标

Our **Abpromise guarantee** covers the use of **ab112339** in the following tested applications.

The application notes include recommended starting dilutions; optimal dilutions/concentrations should be determined by the end user.

应用	SDS-PAGE ELISA Western blot
形式	Liquid
补充说明	This product was previously labelled as Phospholipase C gamma 1

制备和贮存

稳定性和存储 Shipped on dry ice. Upon delivery aliquot and store at -80°C. Avoid freeze / thaw cycles.

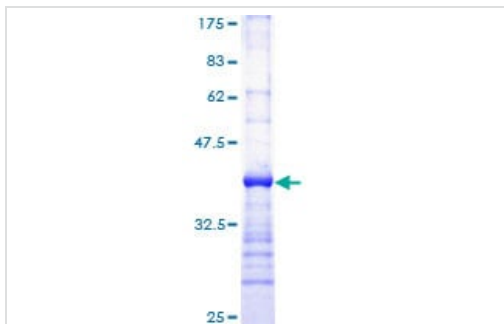
pH: 8.00

Constituents: 0.31% Glutathione, 0.79% Tris HCl

常规信息

功能	Plays a role in actin reorganization and cell migration. The production of the second messenger molecules diacylglycerol (DAG) and inositol 1,4,5-trisphosphate (IP3) is mediated by activated phosphatidylinositol-specific phospholipase C enzymes. Major substrate for heparin-binding growth factor 1 (acidic fibroblast growth factor)-activated tyrosine kinase.
序列相似性	Contains 1 C2 domain. Contains 1 EF-hand domain. Contains 2 PH domains. Contains 1 PI-PLC X-box domain. Contains 1 PI-PLC Y-box domain. Contains 2 SH2 domains. Contains 1 SH3 domain.
结构域	The SH3 domain mediates interaction with CLNK (By similarity). The SH3 domain also mediates interaction with RALGPS1.
翻译后修饰	The receptor-mediated activation of PLC-gamma-1 and PLC-gamma-2 involves their phosphorylation by tyrosine kinases in response to ligation of a variety of growth factor receptors and immune system receptors. May be dephosphorylated by PTPRJ. Ubiquitinated by CBLB in activated T-cells.
细胞定位	Cell projection > lamellipodium. Cell projection > ruffle. Rapidly redistributed to ruffles and lamellipodia structures in response to epidermal growth factor (EGF) treatment.

图片



SDS-PAGE - Recombinant Human Phospholipase C gamma 1/PLC-gamma-1 protein (ab112339)

ab112339 analysed on a 12.5% SDS-PAGE gel stained with Coomassie Blue.

Please note: All products are "FOR RESEARCH USE ONLY. NOT FOR USE IN DIAGNOSTIC PROCEDURES"

Our Abpromise to you: Quality guaranteed and expert technical support

- Replacement or refund for products not performing as stated on the datasheet

- Valid for 12 months from date of delivery
- Response to your inquiry within 24 hours

- We provide support in Chinese, English, French, German, Japanese and Spanish
- Extensive multi-media technical resources to help you
- We investigate all quality concerns to ensure our products perform to the highest standards

If the product does not perform as described on this datasheet, we will offer a refund or replacement. For full details of the Abpromise, please visit <https://www.abcam.cn/abpromise> or contact our technical team.

Terms and conditions

- Guarantee only valid for products bought direct from Abcam or one of our authorized distributors