

Product datasheet

Recombinant Human Phospholamban protein ab114227

1 图像

描述

产品名称	重组人Phospholamban蛋白
表达系统	Wheat germ
Accession	<u>P26678</u>
蛋白长度	Protein fragment
无动物成分	No
性质	Recombinant
种属	Human
序列	MEKVQYLTRSAIRRASTIEMPQARQKLQN
预测分子量	29 kDa including tags
氨基酸	1 to 30
标签	GST tag N-Terminus

技术指标

Our **Abpromise guarantee** covers the use of **ab114227** in the following tested applications.

The application notes include recommended starting dilutions; optimal dilutions/concentrations should be determined by the end user.

应用	ELISA SDS-PAGE Western blot
形式	Liquid
补充说明	Protein concentration is above or equal to 0.05 mg/mL.

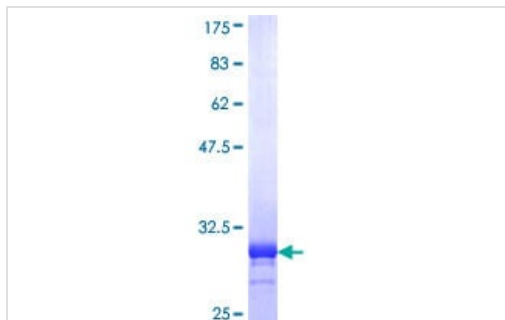
制备和贮存

稳定性和存储	Shipped on dry ice. Upon delivery aliquot and store at -80°C. Avoid freeze / thaw cycles. pH: 8.00 Constituents: 0.3% Glutathione, 0.79% Tris HCl
--------	---

常规信息

功能	Reversibly inhibits the activity of ATP2A2 in cardiac sarcoplasmic reticulum by decreasing the apparent affinity of the ATPase for Ca(2+). Modulates the contractility of the heart muscle in response to physiological stimuli via its effects on ATP2A2. Modulates calcium re-uptake during muscle relaxation and plays an important role in calcium homeostasis in the heart muscle. The degree of ATP2A2 inhibition depends on the oligomeric state of PLN. ATP2A2 inhibition is alleviated by PLN phosphorylation.
组织特异性	Heart muscle (at protein level).
疾病相关	Cardiomyopathy, dilated 1P Cardiomyopathy, familial hypertrophic 18
序列相似性	Belongs to the phospholamban family.
翻译后修饰	Phosphorylation by PKA abolishes the inhibition of ATP2A2-mediated calcium uptake. Phosphorylated at Thr-17 by CaMK2, and in response to beta-adrenergic stimulation. Phosphorylation by DMPK may stimulate sarcoplasmic reticulum calcium uptake in cardiomyocytes.
细胞定位	Endoplasmic reticulum membrane. Sarcoplasmic reticulum membrane. Mitochondrion membrane. Membrane. Colocalizes with HAX1 at the endoplasmic reticulum (PubMed:17241641). Colocalizes with DMPK a the sarcoplasmic reticulum (PubMed:15598648).

图片



ab114227 analysed on a 12.5% SDS-PAGE gel stained with Coomassie Blue.

SDS-PAGE - Recombinant Human Phospholamban protein (ab114227)

Please note: All products are "FOR RESEARCH USE ONLY. NOT FOR USE IN DIAGNOSTIC PROCEDURES"

Our Abpromise to you: Quality guaranteed and expert technical support

- Replacement or refund for products not performing as stated on the datasheet
- Valid for 12 months from date of delivery
- Response to your inquiry within 24 hours
- We provide support in Chinese, English, French, German, Japanese and Spanish
- Extensive multi-media technical resources to help you
- We investigate all quality concerns to ensure our products perform to the highest standards

If the product does not perform as described on this datasheet, we will offer a refund or replacement. For full details of the Abpromise, please visit <https://www.abcam.cn/abpromise> or contact our technical team.

Terms and conditions

- Guarantee only valid for products bought direct from Abcam or one of our authorized distributors