

Recombinant Human PHAP1 protein ab101155

1 图像

描述

产品名称	重组人PHAP1蛋白	
纯度	> 90 % SDS-PAGE. ab101155 was purified using conventional chromatography techniques.	
表达系统	Escherichia coli	
Accession	<u>P39687</u>	
蛋白长度	Full length protein	
无动物成分	No	
性质	Recombinant	
种属	Human	
序列		<p>MGSSHHHHHSSGLVPRGSHMEMGRRIHLELRNRTPSDVK ELVLDNSRSN EGKLEGLTDFELEEFLSTINVGLTSIANLPKLNKLELS DNRVSGGL EVLAEKCPNLTHLNSGNKIKDLSTIEPLKKLENLKSDFN CEVTNLND YRENVFKLLPQLTYLDGYDRDDKEAPSDAEGYVEGLDDEEE DEDEEYD EDAQVVEDEEDEDDEEEEGEEEDVSGEEEDDEEGYNDGEVDDE EDEEELGE EERGQKRKREPEDEGEDDD</p>
预测分子量	31 kDa including tags	
氨基酸	1 to 249	
标签	His tag N-Terminus	

技术指标

Our **Abpromise guarantee** covers the use of **ab101155** in the following tested applications.

The application notes include recommended starting dilutions; optimal dilutions/concentrations should be determined by the end user.

应用	SDS-PAGE
	Mass Spectrometry
质谱法	MALDI-TOF
形式	Liquid

制备和贮存

稳定性和存储

Shipped at 4°C. Store at +4°C short term (1-2 weeks). Upon delivery aliquot. Store at -20°C or -80°C. Avoid freeze / thaw cycle.

pH: 8.00

Constituents: 0.00174% PMSF, 0.0154% DTT, 0.316% Tris HCl, 10% Glycerol (glycerin, glycerine), 0.58% Sodium chloride

常规信息

功能

Implicated in a number of cellular processes, including proliferation, differentiation, caspase-dependent and caspase-independent apoptosis, suppression of transformation (tumor suppressor), inhibition of protein phosphatase 2A, regulation of mRNA trafficking and stability in association with ELAVL1, and inhibition of acetyltransferases as part of the INHAT (inhibitor of histone acetyltransferases) complex. Plays a role in E4F1-mediated transcriptional repression.

组织特异性

Expressed in all tissues tested. Highly expressed in kidney and skeletal muscle, moderate levels of expression in brain, placenta and pancreas, and weakly expressed in lung. Found in all regions of the brain examined (amygdala, caudate nucleus, corpus callosum, hippocampus and thalamus), with highest levels in amygdala.

序列相似性

Belongs to the ANP32 family.
Contains 4 LRR (leucine-rich) repeats.
Contains 1 LRRCT domain.

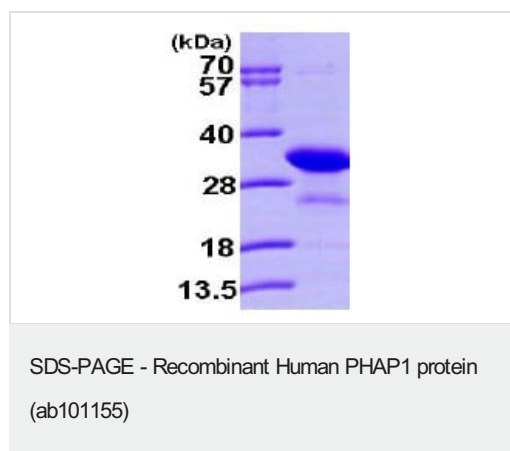
翻译后修饰

Phosphorylated on serine residues.
The N-terminus is blocked.
Some glutamate residues are glycosylated by TTLL8. This modification occurs exclusively on glutamate residues and results in a glycine chain on the gamma-carboxyl group.

细胞定位

Nucleus. Cytoplasm. Endoplasmic reticulum. Translocates to the cytoplasm during the process of neuritogenesis (By similarity). Shuttles between nucleus and cytoplasm.

图片



15% SDS-PAGE (3 µg)

Please note: All products are "FOR RESEARCH USE ONLY. NOT FOR USE IN DIAGNOSTIC PROCEDURES"

Our Abpromise to you: Quality guaranteed and expert technical support

- Replacement or refund for products not performing as stated on the datasheet
- Valid for 12 months from date of delivery
- Response to your inquiry within 24 hours

- We provide support in Chinese, English, French, German, Japanese and Spanish
- Extensive multi-media technical resources to help you
- We investigate all quality concerns to ensure our products perform to the highest standards

If the product does not perform as described on this datasheet, we will offer a refund or replacement. For full details of the Abpromise, please visit <https://www.abcam.cn/abpromise> or contact our technical team.

Terms and conditions

- Guarantee only valid for products bought direct from Abcam or one of our authorized distributors