

Recombinant Human PGAM1 protein ab100885

2 图像

描述	
产品名称	重组人PGAM1蛋白
纯度	> 90 % SDS-PAGE. ab100885 is purified using conventional chromatography techniques.
表达系统	Escherichia coli
Accession	<u>P18669</u>
蛋白长度	Full length protein
无动物成分	No
性质	Recombinant
种属	Human
序列	<div>MGSSHHHHHH SSGLVPRGSH MAAYKLVLIR HGESAWNLEN RFSGWYDADL SPAGHEEAKR GGQALRDAGY EFDICFTSVQ KRAIRTLWTV LDAIDQMWLP VVRTWRLNER HYGGLTGLNK AETAAKHGEA QVKIWRRSYD VPPPPMEPDH PFYSNISKDR RYADLTEDQL PSCESLKDTI ARALPFWNEE IVPQIKEGKR VLIAAHGNSL RGIVKHLEGL SEEAIMELNL PTGIPIVYEL DKNLKPIKPM QFLGDEETVR KAMEAVAAQG KAKK</div>
预测分子量	31 kDa including tags
氨基酸	1 to 254
标签	His tag N-Terminus

技术指标	
Our <u>Abpromise guarantee</u> covers the use of ab100885 in the following tested applications.	
The application notes include recommended starting dilutions; optimal dilutions/concentrations should be determined by the end user.	
应用	Mass Spectrometry SDS-PAGE Western blot
质谱法	MALDI-TOF
形式	Liquid

制备和贮存

稳定性和存储

Shipped at 4°C. Upon delivery aliquot and store at -20°C or -80°C. Avoid repeated freeze / thaw cycles.

pH: 8.00

Constituents: 0.0154% DTT, 0.316% Tris HCl, 10% Glycerol (glycerin, glycerine)

常规信息

功能

Interconversion of 3- and 2-phosphoglycerate with 2,3-bisphosphoglycerate as the primer of the reaction. Can also catalyze the reaction of EC 5.4.2.4 (synthase) and EC 3.1.3.13 (phosphatase), but with a reduced activity.

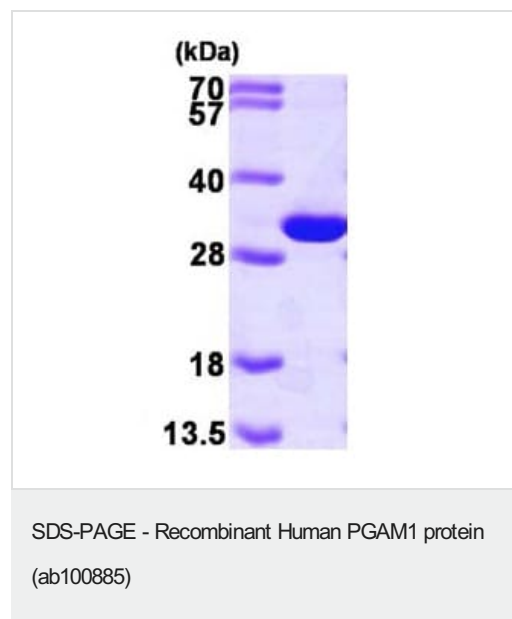
组织特异性

In mammalian tissues there are two types of phosphoglycerate mutase isozymes: type-M in muscles and type-B in other tissues.

序列相似性

Belongs to the phosphoglycerate mutase family. BPG-dependent PGAM subfamily.

图片



ab100885 (3 µg) on an SDS-PAGE gel (15%).



Western blot - Recombinant Human PGAM1 protein (ab100885)

All lanes : Anti-PGAM1 antibody (**ab96622**) at 1/1000 dilution

Lane 1 : Recombinant Human PGAM1 protein (ab100885) at 0.1 μ g

Lane 2 : Recombinant Human PGAM1 protein (ab100885) at 0.01 μ g

Secondary

All lanes : Goat Anti-Rabbit IgG H&L (HRP) preadsorbed (**ab97080**) at 1/5000 dilution

Developed using the ECL technique.

Performed under reducing conditions.

Exposure time: 1 minute

Please note: All products are "FOR RESEARCH USE ONLY. NOT FOR USE IN DIAGNOSTIC PROCEDURES"

Our Abpromise to you: Quality guaranteed and expert technical support

- Replacement or refund for products not performing as stated on the datasheet
- Valid for 12 months from date of delivery
- Response to your inquiry within 24 hours
- We provide support in Chinese, English, French, German, Japanese and Spanish
- Extensive multi-media technical resources to help you
- We investigate all quality concerns to ensure our products perform to the highest standards

If the product does not perform as described on this datasheet, we will offer a refund or replacement. For full details of the Abpromise, please visit <https://www.abcam.cn/abpromise> or contact our technical team.

Terms and conditions

- Guarantee only valid for products bought direct from Abcam or one of our authorized distributors