

# Recombinant human PDE5A/PDE5 protein ab125581

[1 References](#) [5 图像](#)

### 描述

---

产品名称	重组人PDE5A/PDE5蛋白
生物活性	The specific activity of ab125581 was determined to be 2275 nmol/min/mg.
纯度	> 90 % Densitometry. The purity was determined to be 95% by densitometry. Affinity purified.
表达系统	Baculovirus infected Sf9 cells
Accession	<b><u>O76074</u></b>
蛋白长度	Protein fragment
无动物成分	No
性质	Recombinant
种属	Human
预测分子量	63 kDa including tags
氨基酸	537 to 875
标签	GST tag N-Terminus

### 技术指标

---

Our **Abpromise guarantee** covers the use of **ab125581** in the following tested applications.

The application notes include recommended starting dilutions; optimal dilutions/concentrations should be determined by the end user.

应用	Functional Studies SDS-PAGE
形式	Liquid
补充说明	This product was previously labelled as PDE5A

### 制备和贮存

---

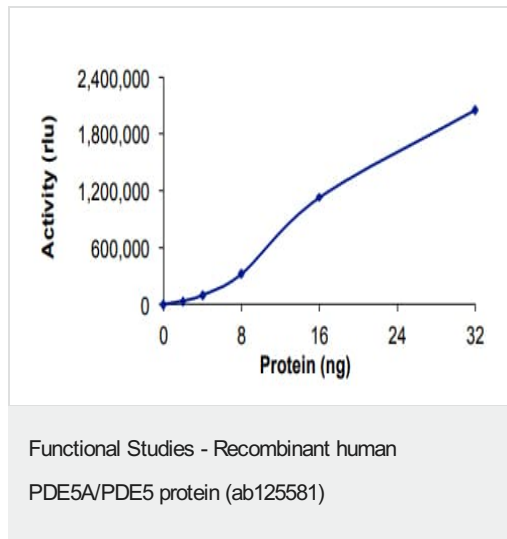
稳定性和存储	Shipped on dry ice. Upon delivery aliquot and store at -80°C. Avoid freeze / thaw cycles. pH: 7.50 Constituents: 0.002% PMSF, 0.5% Magnesium chloride, 0.003% DTT, 0.79% Tris HCl, 25% Glycerol (glycerin, glycerine), 0.29% Sodium chloride
--------	--

This product is an active protein and may elicit a biological response in vivo, handle with caution.

## 常规信息

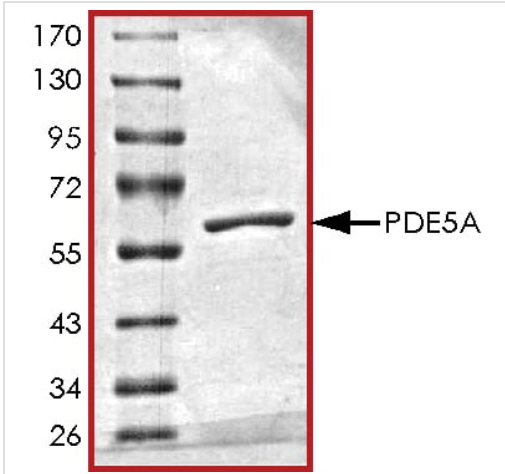
<b>功能</b>	Plays a role in signal transduction by regulating the intracellular concentration of cyclic nucleotides. This phosphodiesterase catalyzes the specific hydrolysis of cGMP to 5'-GMP.
<b>组织特异性</b>	Expressed in aortic smooth muscle cells, heart, placenta, skeletal muscle and pancreas and, to a much lesser extent, in brain, liver and lung.
<b>通路</b>	Purine metabolism; 3',5'-cyclic GMP degradation; GMP from 3',5'-cyclic GMP: step 1/1.
<b>序列相似性</b>	Belongs to the cyclic nucleotide phosphodiesterase family. Contains 2 GAF domains.
<b>结构域</b>	Composed of a C-terminal catalytic domain containing two putative divalent metal sites and an N-terminal regulatory domain which contains two homologous allosteric cGMP-binding regions, A and B.
<b>翻译后修饰</b>	Phosphorylation is regulated by binding of cGMP to the two allosteric sites.

## 图片



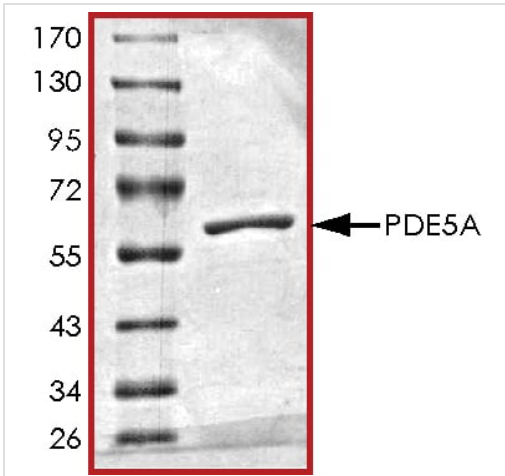
The specific activity of PDE5A/PDE5 (ab125581) was determined to be 1940 nmol/min/mg as per activity assay protocol

SDS PAGE analysis of ab125581



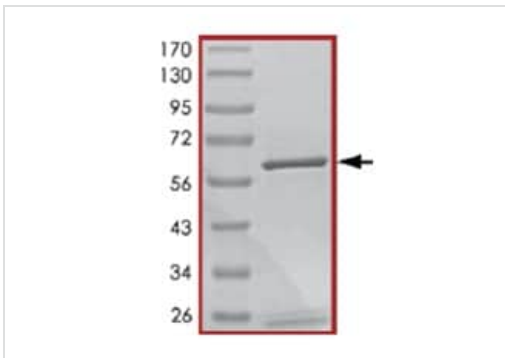
SDS-PAGE - Recombinant human PDE5A/PDE5 protein (ab125581)

SDS PAGE analysis of ab125581

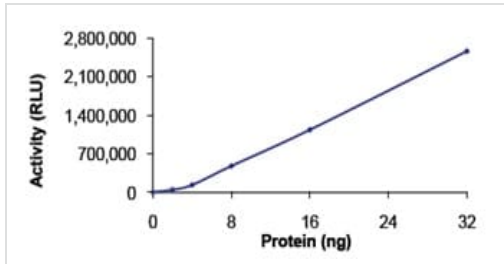


SDS-PAGE - Recombinant human PDE5A/PDE5 protein (ab125581)

SDS Page analysis of ab125581



SDS-PAGE - Recombinant human PDE5A/PDE5 protein (ab125581)



Functional Studies - Recombinant human  
PDE5A/PDE5 protein (ab125581)

The specific activity of ab125581 was determined to be 2275 nmol/min/mg.

**Please note:** All products are "FOR RESEARCH USE ONLY. NOT FOR USE IN DIAGNOSTIC PROCEDURES"

### Our Abpromise to you: Quality guaranteed and expert technical support

---

- Replacement or refund for products not performing as stated on the datasheet
- Valid for 12 months from date of delivery
- Response to your inquiry within 24 hours
  
- We provide support in Chinese, English, French, German, Japanese and Spanish
- Extensive multi-media technical resources to help you
- We investigate all quality concerns to ensure our products perform to the highest standards

If the product does not perform as described on this datasheet, we will offer a refund or replacement. For full details of the Abpromise, please visit <https://www.abcam.cn/abpromise> or contact our technical team.

### Terms and conditions

---

- Guarantee only valid for products bought direct from Abcam or one of our authorized distributors