

Recombinant human PDE10A protein ab101116

3 图像

描述

产品名称	重组人PDE10A蛋白
生物活性	The specific activity of ab101116 was determined to be 92 nmol/min/mg as per activity assay.
纯度	> 80 % SDS-PAGE. Affinity purified.
表达系统	Baculovirus infected insect cells
Accession	<u>Q9Y233</u>
蛋白长度	Protein fragment
无动物成分	No
性质	Recombinant
种属	Human
序列	<p> MQGVVYELNSYIEQRLDTGGDNQLLLYELSSIIKIATKADGF ALYFLGEC NNSLCIFTPPGIKEGKPRILIPAGPITQGTTVSAYVAKSRKTL LVEDILGD ERFPRGTGLESGTRIQSVLCLPIVTAIGDLIGILELYRHWGK EAFCLSHQ EVATANLAWASVAIHQVQVCRGLAKQTELNDFLLDVSKTYFD NIVAIDSL LEHIMIYAKNLVNADRCALFQVDHKNKELYSDLFDIGEEKEG KPVFKKTK EIRFSIEKGIAGQVARTGEVLNIPDAYADPRFNREVDLYTGY TTRNILCM PIVSRGSVIGVVQMVNKISGSAFSKTDENNFKMAVFCALAL HCANMYHR IRHSECIYRVTMEKLSYHSICTSEEWQGLMQFTLPVRLCKEI ELFHFDIG PFENMWPGIFVYMVHRSCGTSCFELEKLCRFIMSVKKNYRRV PYHNWKHA VVAHCMYAILQNNHTLFTDLERKGLLIACLCHDLDRGFSN SYLQKFDH PLAALYSTSTMEQHHSQTVSILQLEGHNIFSTLSSEYEQV LEIRKAI IATDLALYFGNRKQLEEMYQTGSLNLNQSHRDRVIGLMMTA CDLCSVTK </p>

LWPVTKLTANDIYAEFWAEGDEMKKLGIQIPMMDRDKKDEV
PQGQLGFY
NAVAIPCYTTLTQILPPTPELLKACRDNLSQWEKVIRGEETA
TWISSPSV AQAASED

预测分子量 102 kDa including tags
氨基酸 71 to 779

技术指标

Our **Abpromise guarantee** covers the use of **ab101116** in the following tested applications.

The application notes include recommended starting dilutions; optimal dilutions/concentrations should be determined by the end user.

应用 Functional Studies
SDS-PAGE

形式 Liquid

制备和贮存

稳定性和存储 Shipped on dry ice. Upon delivery aliquot and store at -80°C. Avoid freeze / thaw cycles.
pH: 7.50
Constituents: 0.307% Glutathione, 0.00174% PMSF, 0.00385% DTT, 0.79% Tris HCl, 0.00292% EDTA, 25% Glycerol (glycerin, glycerine), 0.87% Sodium chloride
This product is an active protein and may elicit a biological response in vivo, handle with caution.

常规信息

功能 Plays a role in signal transduction by regulating the intracellular concentration of cyclic nucleotides. Can hydrolyze both cAMP and cGMP, but has higher affinity for cAMP and is more efficient with cAMP as substrate.

组织特异性 Abundant in the putamen and caudate nucleus regions of brain and testis, moderately expressed in the thyroid gland, pituitary gland, thalamus and cerebellum.

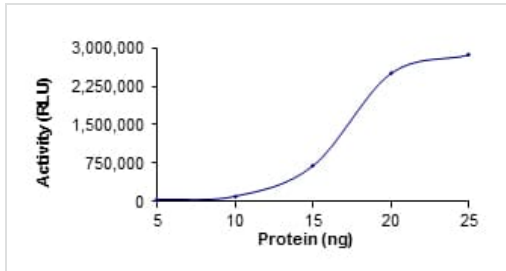
通路 Purine metabolism; 3',5'-cyclic AMP degradation; AMP from 3',5'-cyclic AMP: step 1/1.
Purine metabolism; 3',5'-cyclic GMP degradation; GMP from 3',5'-cyclic GMP: step 1/1.

序列相似性 Belongs to the cyclic nucleotide phosphodiesterase family.
Contains 2 GAF domains.

结构域 The tandem GAF domains bind cAMP, and regulate enzyme activity. The binding of cAMP stimulates enzyme activity.
Composed of a C-terminal catalytic domain containing two divalent metal sites and an N-terminal regulatory domain which contains one cyclic nucleotide-binding region.

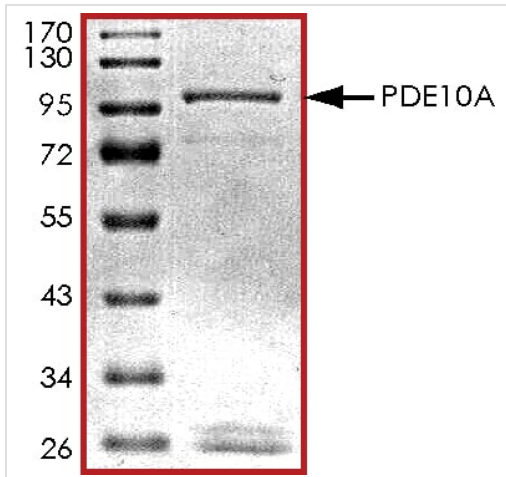
细胞定位 Cytoplasm. Located mostly to soluble cellular fractions.

图片



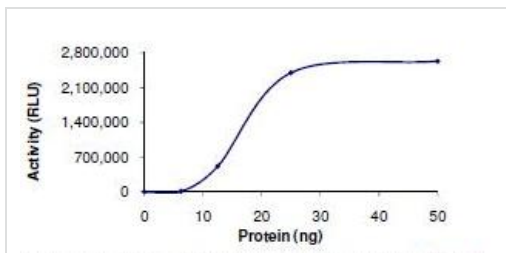
The specific activity of PDE10A (ab101116) was determined to be 100 nmol/min/mg as per activity assay protocol

Functional Studies - Recombinant human PDE10A protein (ab101116)



SDS PAGE analysis of ab101116

SDS-PAGE - Recombinant human PDE10A protein (ab101116)



The specific activity of ab101116 was determined to be 92 nmol/min/mg by activity assay.

Functional Studies - Recombinant human PDE10A protein (ab101116)

Please note: All products are "FOR RESEARCH USE ONLY. NOT FOR USE IN DIAGNOSTIC PROCEDURES"

Our Abpromise to you: Quality guaranteed and expert technical support

- Replacement or refund for products not performing as stated on the datasheet
- Valid for 12 months from date of delivery
- Response to your inquiry within 24 hours

- We provide support in Chinese, English, French, German, Japanese and Spanish
- Extensive multi-media technical resources to help you
- We investigate all quality concerns to ensure our products perform to the highest standards

If the product does not perform as described on this datasheet, we will offer a refund or replacement. For full details of the Abpromise, please visit <https://www.abcam.cn/abpromise> or contact our technical team.

Terms and conditions

- Guarantee only valid for products bought direct from Abcam or one of our authorized distributors